

EQACC SOLAR

What size solar panel should I choose



Overview

What size solar panels do I Need?

Solar panels have become the cornerstone of residential clean energy, with standard sizes designed to balance power output and installation practicality. Most residential solar panels measure between 65 to 75 inches long and 39 to 41 inches wide, delivering power outputs ranging from 250 to 400 watts per panel.

What are the typical dimensions of a solar panel?

Solar panel “size” refers to two key measurements: Physical Size: 51-102 cm long, 41-66 cm wide (typical range). These dimensions work together with power output to determine your system’s efficiency, cost, and performance.

How do I choose the right solar panel size?

Assess Your Energy Needs: The first step in choosing the right solar panel size is to determine how much energy you need to generate. This will depend on whether you’re powering an entire home, a business, or just looking for portable energy for outdoor use.

How do I choose a residential solar panel?

When choosing residential solar panels, you’ll typically encounter two main configurations: 60-cell and 72-cell panels. 60-cell panels are the most popular choice for homes, measuring about 5.4 feet by 3.25 feet. These panels offer an excellent balance of power output and manageable size, making them perfect for most residential roofs.

What size solar panel should I choose



Solar Panel Size Guide , Best Panel Size for ...

Learn how to choose the ideal solar panel size for your home. Get expert tips, standard dimensions, and a size chart to simplify your ...

Solar panel sizes and choosing the perfect ...

What size solar panel should I choose for home use? In residential systems, 54-cell panels, which measure 1722 x 1134 mm, are ...



Efficient Higher Revenue

- Max. Efficiency 97.5%
- Max. PV Input Voltage 600V
- 100% Peak Output Power
- 3 MPPT Trackers, 100% DC Input Overvoltage
- Max. PV Input Current 15A, Compatible with High Power Modules

Intelligent Simple O&M

- IP68 Protection Degree: support outdoor installation
- Smart I-V Curve Diagnosis Function: locate PV string faults accurately and automatically detect faults
- DC A.C Type II SPD: prevent lightning damage
- Battery Reverse Connection Protection

Flexible Abundant Configuration

- Plug & Play, EPS Switching Under 30ms
- Compatible with Lead-acid and Lithium Batteries
- Max. 6 Units Inverters Parallel
- AFCD Function (Optional): when an arc fault is detected the inverter immediately stops operation



✓ LIQUID/AIR COOLING

✓ PROTECTION IP54/IP55

✓ PCS EMS

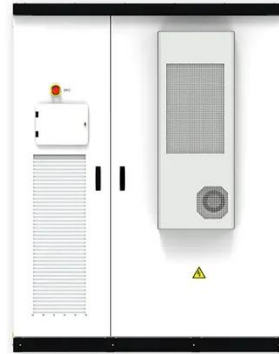
✓ BATTERY /6000 CYCLES

Solar Panel Size Guide , Best Panel Size for Your Roof

Learn how to choose the ideal solar panel size for your home. Get expert tips, standard dimensions, and a size chart to simplify your solar decisions.

Solar panel sizes and choosing the perfect solar system

What size solar panel should I choose for home use? In residential systems, 54-cell panels, which measure 1722 x 1134 mm, are the most common. The decision depends on the ...



Detailed Guide to Solar Panel Size

Looking to install solar panels? Learn about solar panel dimensions, wattage, cell types, and how to calculate the system size for ...

Solar Panel Size: 2025 Detailed Guide

Discover how to choose the right solar panel size for your home or business. Learn key factors, calculations, and maximize your energy efficiency today!



Discover the Best Solar Panel Size for Your Needs--Easy Guide

Ready to pick the right solar panel size? Read our guide for tips on choosing the perfect fit, understanding different sizes, and boosting energy efficiency!



Solar Panel Size & Dimensions Guide 2025

Complete guide to solar panel sizes and dimensions. Compare 60-cell vs 72-cell panels, weights, roof space requirements, and ...



Perfect Solar Panel Sizes for Your Home (Expert Sizing Guide)

Solar panels have become the cornerstone of residential clean energy, with standard sizes designed to balance power output and installation practicality. Most residential ...

Detailed Guide to Solar Panel Size & Dimensions

Looking to install solar panels? Learn about solar panel dimensions, wattage, cell types, and how to calculate the system size for your home's energy

needs.

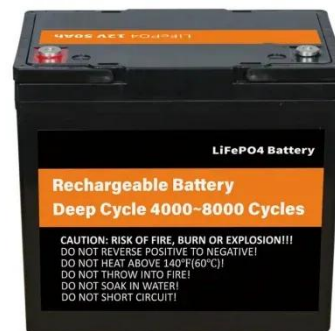


Solar Panel Sizes: Choosing the Right ...

Choosing the right solar panel size can make or break your system's performance. In this guide, we break down how to match your ...

Discover the Best Solar Panel Size for Your ...

Ready to pick the right solar panel size? Read our guide for tips on choosing the perfect fit, understanding different sizes, and ...



What size of home PV panels should I choose?

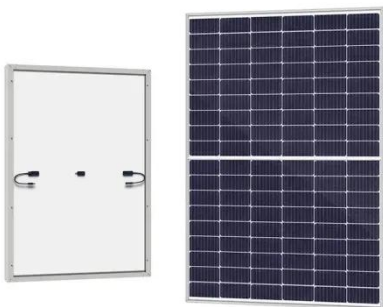
As a seasoned provider of home PV panels, I often encounter homeowners grappling with the question: "What size of home PV panels should I choose?"

This decision is ...



The Ultimate Solar Panel Size Guide for Every Homeowner

Introduction Selecting the appropriate solar panel size is a crucial aspect of understanding how solar energy functions. With varying roof shapes, energy objectives, and ...



Solar Panel Size & Dimensions Guide 2025 , Complete Specs

Complete guide to solar panel sizes and dimensions. Compare 60-cell vs 72-cell panels, weights, roof space requirements, and installation specs for 2025.

Solar Panel Sizes: Choosing the Right Dimensions for Any ...

Choosing the right solar panel size can make or break your system's performance. In this guide, we break down how to match your energy needs,

roof space, and budget with ...



Perfect Solar Panel Sizes for Your Home ...

Solar panels have become the cornerstone of residential clean energy, with standard sizes designed to balance power output and ...

Contact Us

For catalog requests, pricing, or partnerships, please visit:
<https://www.eqacc.co.za>