

**EQACC SOLAR**

# What does inverter dc220 mean



## Overview

---

What is a DC inverter?

An inverter is a device which converts DC power into AC power at desired output voltage and frequency. The DC power input to the inverter is obtained from an existing power supply source or from a rotating alternator through a rectifier or a battery, fuel cell, photovoltaic array or magnetohydrodynamic (MHD) generator.

How does a DC to AC inverter work?

Converting direct current (DC) from batteries or solar panels into alternating current (AC) for household appliances is a fundamental requirement in many electrical projects. A DC to AC inverter circuit transforms 12V DC input into 220V AC output, enabling you to power standard household devices from battery sources.

What is a 240 volt inverter?

For household application, inverter converts the DC power available for battery into 240 V AC. Inverters can be broadly classified into two types: Voltage Source Inverter (VSI) and Current Source Inverter (CSI). This classification is based on the input source i.e. whether the input source is voltage source or current source.

What type of Technology is an inverter?

The term "inverter" essentially refers to a circuit that converts the current from DC to AC (power inverter circuit), but it can also refer to a power inverter device used in home appliances, such as air conditioners and washing machines.

## What does inverter dc220 mean

---



### 220 Volt Inverter: The Ultimate Guide to Choosing the Right ...

The Ultimate Guide to 220 Volt Inverters  
In today's world, reliable power sources are essential for both home and outdoor activities. One solution that has gained popularity is ...

### Inverter Specifications and Data Sheet

The article provides an overview of inverter functions, key specifications, and common features found in inverter systems, along with an example of power calculations and inverter ...

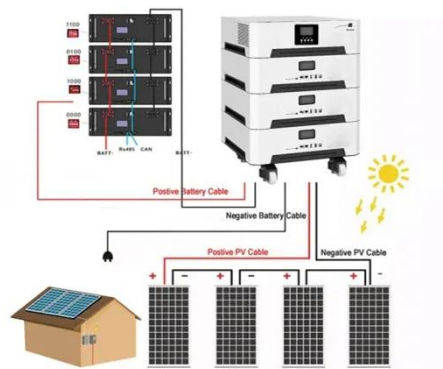


### Buyer's Guide for 220 Volt Inverters , 220 Volt Appliances

Buyer's Guide for 220 Volt Inverters  
Question1: What is a 220 volt power inverter? Answer 1: A 220 volt power inverter is a device that converts low-voltage DC (direct current) power to ...

### Complete Guide to Building a DC to AC Inverter Circuit: 12V ...

A DC to AC inverter circuit transforms 12V DC input into 220V AC output, enabling you to power standard household devices from battery sources. This comprehensive guide will ...



## Inverter Specifications and Data Sheet

The article provides an overview of inverter functions, key specifications, and common features found in inverter systems, along with ...

## What Does an Inverter Do, and How Does It ...

An inverter converts DC power from batteries or solar panels into AC power for household appliances. It's essential for off-grid systems, RVs, and ...



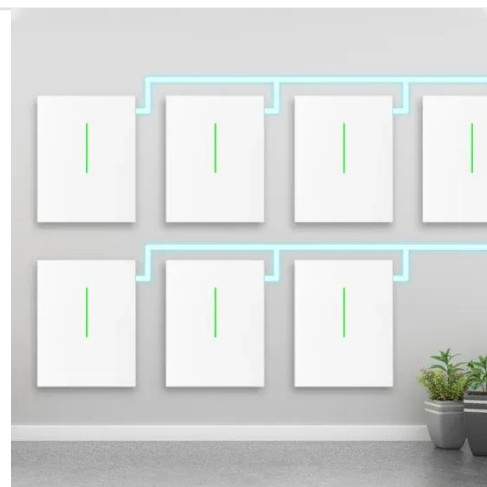
## All About DC Inverter Air Conditioners (2025) , Today's ...

A DC inverter makes modern air conditioners more energy-efficient and precise. Learn more about how they work from our HVAC experts.



## What Is a Power Inverter and How Does It ...

Discover the key differences between DC and AC electricity and the crucial role of power inverters in renewable energy systems. ...



## What is a power inverter? , Tech , Matsusada Precision

Basic Technical Explanation of power inverter - Power Inverter circuit and power inverter device, Frequency and Rotation Speed, Device configuration, Smart Grids.

## Converting DC to AC: Basic Principles of Inverters

This article investigates the basic principles of inverters, different types of DC-to-AC conversion, and common applications for generating AC voltage in

manufacturing.



### What is Inverter? - Meaning, Types and Application

The DC power input to the inverter is obtained from an existing power supply source or from a rotating alternator through a rectifier or a battery, fuel cell, photovoltaic array ...

### Converting DC to AC: Basic Principles of ...

This article investigates the basic principles of inverters, different types of DC-to-AC conversion, and common applications for ...



### What is Inverter? - Meaning, Types and ...

The DC power input to the inverter is obtained from an existing power supply source or from a rotating alternator through a rectifier or a ...



## Complete Guide to Building a DC to AC ...

A DC to AC inverter circuit transforms 12V DC input into 220V AC output, enabling you to power standard household devices from battery ...



## What is a power inverter? , Tech , Matsusada ...

Basic Technical Explanation of power inverter - Power Inverter circuit and power inverter device, Frequency and Rotation Speed, ...

## What Is a Power Inverter and How Does It Work?

Discover the key differences between DC and AC electricity and the crucial role of power inverters in renewable energy systems. Learn about inverter

components, types, ...



### **What Does an Inverter Do, and How Does It Work , Renogy US**

An inverter converts DC power from batteries or solar panels into AC power for household appliances. It's essential for off-grid systems, RVs, and backup power, enabling the use of ...

## **Contact Us**

For catalog requests, pricing, or partnerships, please visit:  
<https://www.eqacc.co.za>