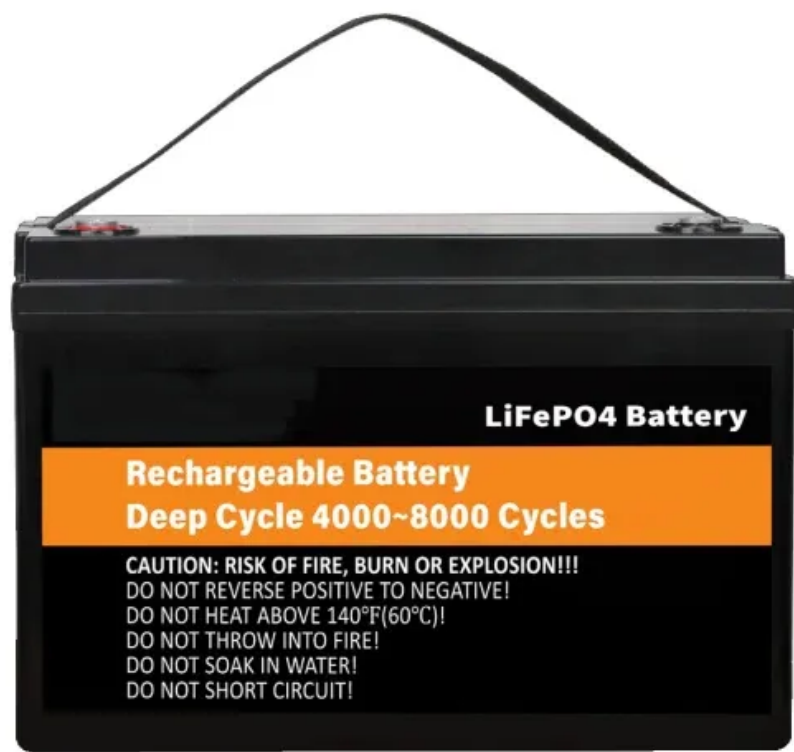


EQACC SOLAR

What devices are there in the base station communication channel



Overview

What is a base station in a wireless network?

A base station is a critical component of wireless communication networks. It serves as the central point of a network that connects various devices, such as smartphones, tablets, and computers. The base station transmits and receives signals, ensuring seamless communication over radio frequencies.

What is a base station in telecommunications?

In telecommunications, a base station is a fixed transceiver that serves as the main communication point for one or more wireless mobile client devices. It not only connects wireless devices to each other but also links them to other networks or devices, often through dedicated high-bandwidth wired or fiber optic connections.

Why is a base station important in wireless communication?

A base station is fundamental in wireless communication, because it facilitates the connection between your device and the wider network. Without base stations, mobile data and voice services would be impossible, as there would be no infrastructure to handle the transmission of signals.

What are base stations & how do they work?

Base stations are the critical components that enable mobile phones and other devices to connect to cellular networks. Here's how they work in a typical mobile network: **Signal Transmission and Reception:** Mobile devices communicate with the nearest base station via radio waves.

What devices are there in the base station communication channel



What is a Base Station? -- From Communication Core to ...

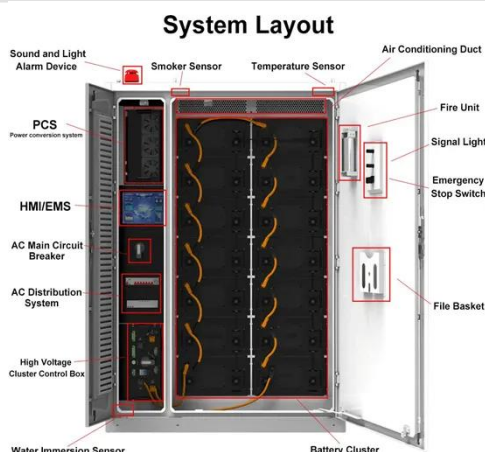
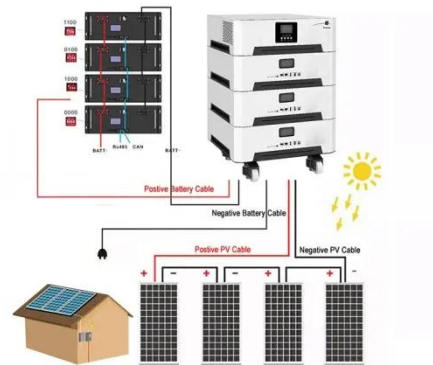
Base stations are the core of mobile communication, and with the rise of 5G, thermal and energy challenges are increasing. This article explains the definition, structure, ...

[Get Price](#)

gsm base station

The base station allocates radio channels to mobile devices for communication. GSM uses a combination of frequency division multiple access (FDMA) and time division ...

[Get Price](#)



Base Station's Role in Wireless Communication Networks

A base station is fundamental in wireless communication, because it facilitates the connection between your device and the wider network. Without base stations, mobile data and voice ...

[Get Price](#)

Choosing the Optimal Channels

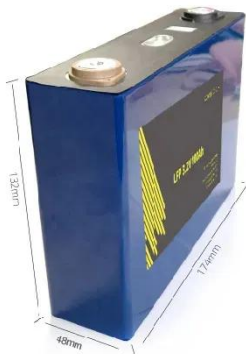
for Base Stations: A ...

In the world of wireless communication, the choice of channels for base stations plays a critical role in ensuring reliable service, minimizing interference, and optimizing ...

[Get Price](#)



- Efficient Higher Revenue**
 - Max. Efficiency 97.5%
 - Max. PV Input Voltage 600V
 - 150% Peak Output Power
 - 2 MPPT Trackers, 150% DC Input Overvoltage
 - Max. PV Input Current 15A, Compatible with High Power Modules
- Intelligent Simple O&M**
 - IP66 Protection Degree: support outdoor installation
 - Smart I-V Curve Diagnosis Function: locate PV string faults accurately and automatically detect faults
 - DC & AC Type I SPDs prevent lightning damage
 - Battery Reverse Connection Protection
- Flexible Abundant Configuration**
 - Plug & Play, ETS Switching Under 10ms
 - Compatible with Lead-acid and Lithium Batteries
 - Max. 6 Units Inverters Parallel
 - AFCC Function (Optional): when an arc fault is detected the inverter immediately stops operation



Understanding Base Stations in Mobile Communication

Antennas Antennas are another vital component of base stations. They transmit and receive radio waves, thus facilitating communication between the base station and mobile ...

[Get Price](#)

Types of Base Stations

Base stations are one of the widely used components in the field of wireless communication and networks. It is an access point or base point of a particular area for ...

[Get Price](#)



Understanding Base Stations: The Backbone of Wireless Communication

Conclusion Base stations are the backbone of modern wireless



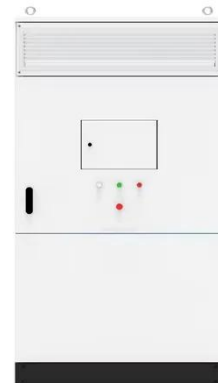
communication networks. They ensure that mobile devices can connect to the internet, make calls, and send ...

[Get Price](#)

What Is A Base Station?

A base station is an integral component of wireless communication networks, serving as a central point that manages the transmission and reception of signals between ...

[Get Price](#)



Physical Channels for 5G NR

Here are the main types of 5G physical channels on the base station: Physical Downlink Shared Channel (PDSCH) Provides a shared data channel for transmitting user ...

[Get Price](#)

Contact Us

For catalog requests, pricing, or partnerships, please visit:
<https://www.eqacc.co.za>