

EQACC SOLAR

The solar inverter automatically stops during the day



Overview

Do solar inverters turn off at night?

Solar inverter systems do turn off at night when there is no sunlight, as solar panels only produce electricity when they are exposed to sunlight. This issue is common with Solectria, often due to a defective inverter. Night Mode – FoxESS Community – Owners & Installers. The inverter shuts off in the evening when there are no PV power.

Why does a solar inverter shut down automatically?

Therefore, the inverter shuts down automatically for safety reasons. This is due to the following: the electricity generated by the solar panels is temporarily stored in the inverter. The inverter is constantly measuring the frequency and the voltage from the grid and adjusts the generated power to this.

Do solar inverters shut off when the grid goes down?

Most solar inverters are sold with an 'automatic shut off switch' that detects when the power grid goes down and shuts down the entirety of the solar power system to protect electricity line workers.

How do solar inverters work?

Solar inverters are designed to operate only during daylight, generating electricity through solar panels. They automatically shut down at night and under conditions like clouds or accumulated snow, preserving energy and preventing system overloads.

The solar inverter automatically stops during the day



Why does my inverter only work during the day?

Is your inverter only working during the day? Don't panic: this is normal. Find out why solar panels and inverters automatically switch off at night.

Solar inverter turn off at night + reasons

Why solar inverter shut off at night Solar inverter turning off at night is a normal and necessary function for solar inverters so that they can conserve energy and protect the system ...



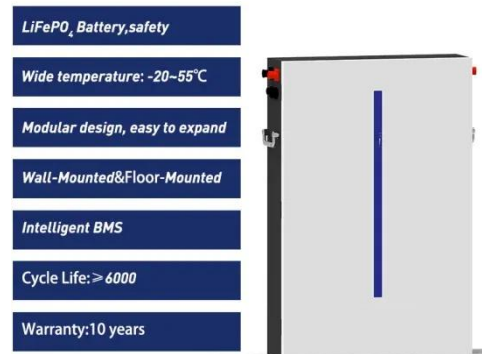
Solar inverter turn off at night + reasons

Why solar inverter shut off at night Solar inverter turning off at night is a normal and necessary function for solar inverters so that they ...



Why Do Solar Inverters Have A Night Mode?

Solar inverters do not shut down completely at night, but they typically enter a standby or low-power mode to conserve energy and optimize efficiency. This standby mode ...



Will the Solar Inverter Automatically Stop Working at Night?

Explore how solar inverters operate at night and discover the best solar inverter for home use to maximize your solar energy efficiency.

Why does an inverter shut down?

4. High voltage outlet inverter Does the inverter shut down (several times) during the day? This is mostly due to the level of voltage from the outlet of ...



What Happens to Solar Inverters at Night? Do They Shut ...

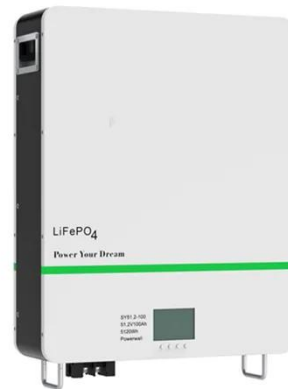
The nocturnal operation of solar inverters is a critical aspect of solar energy systems that requires careful consideration and optimization. While



solar inverters do not shut ...

Does a Solar Inverter Work at Night? Here's ...

Here's the Real Answer If you're exploring solar energy, you might wonder how the system works, especially at night. One common ...



Why Do Solar Inverters Have A Night Mode?

Solar inverters do not shut down completely at night, but they typically enter a standby or low-power mode to conserve energy and ...

Why does an inverter shut down?

4. High voltage outlet inverter Does the inverter shut down (several times) during the day? This is mostly due to the level of voltage from the outlet of the inverter. When the voltage is too high, ...



Do Solar Inverters Turn Off At Night?

Do solar inverters turn off at night? Find out the surprising answer! This informative article explains how solar inverters function at night, why they ...

Autarco solar inverters at night

During the day, solar panels absorb the sunlight and, after that, convert it into direct current (DC) electricity. The solar inverter then converts this DC electricity into alternating ...



Do Solar Inverters Turn Off At Night?

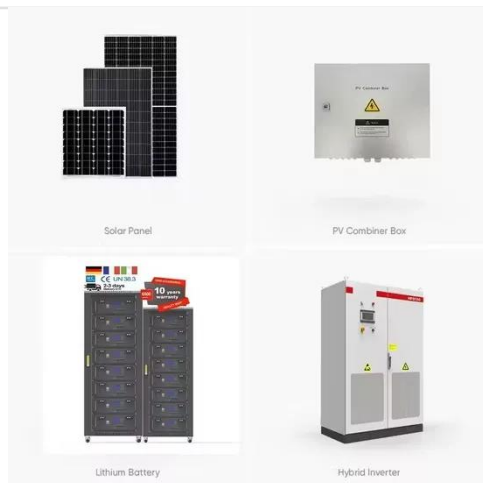
Do solar inverters turn off at night? Find out the surprising answer! This informative article explains how solar inverters function at night, why they

remain active, and their energy ...



Does the Solar Inverter Turn Off at Night?

This article explains whether solar inverter will turn off at night, why inverter automatically enter standby or shut off mode at night due to insufficient solar voltage, and how ...



Does a Solar Inverter Work at Night? Here's the Real Answer

Here's the Real Answer If you're exploring solar energy, you might wonder how the system works, especially at night. One common question is, "Does a solar inverter work at ...

What Happens to Solar Inverters at Night? Do ...

The nocturnal operation of solar inverters is a critical aspect of solar energy systems that requires careful

consideration and optimization. ...



Contact Us

For catalog requests, pricing, or partnerships, please visit:
<https://www.eqacc.co.za>