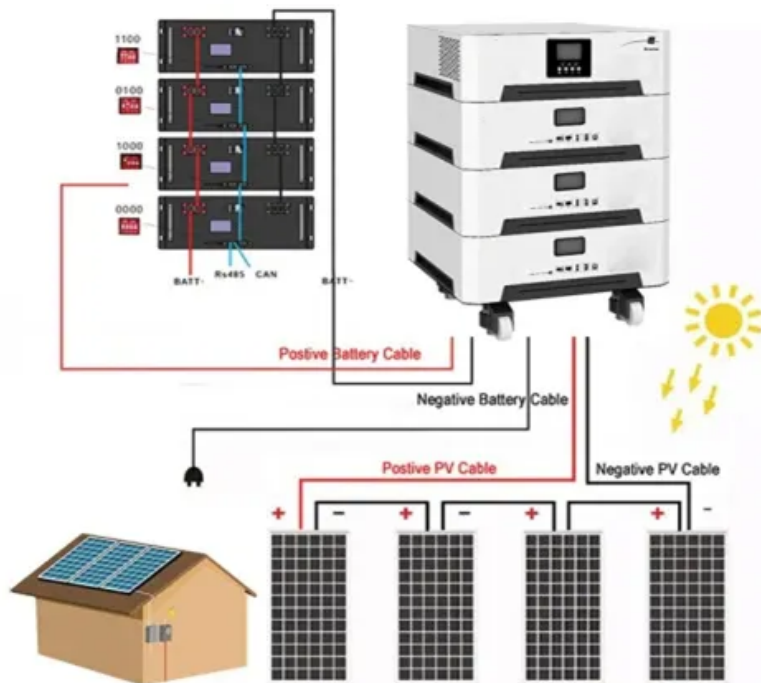


## EQACC SOLAR

# Solar panels block light



## Overview

---

Do solar panels still work on Dark Days?

Check Your Home's Solar Panel Potential! Solar panels can still work on dark days, but they only work 10 to 25 percent as well. Even though the output has gone down, solar systems can still work in many cloudy areas thanks to advanced panel technologies, low energy costs in those areas, and tax breaks.

How a photovoltaic panel works?

The PV panels performance is influenced via their temperature of surface. The photovoltaic panels can only convert a small portion of solar radiation into electricity; the remainder is converted into heat. Reducing the amount of solar radiation that cannot be used by installing acrylic sheet in various slopes according to PV panel.

How do solar panels work?

This is because most solar panels connect cells in series, meaning: Current flows through each cell in a chain. If one cell's current drops, the entire string's current drops. Unshaded cells continue to generate current, which is dissipated as heat in the shaded cell, creating a hot spot.

Do solar panels work on cloudy days?

On cloudy days, nearly all the energy that reaches your panels is diffuse radiation. The solar technology we have now can change both types of light, but not all of it is as efficient as others. Most of the time, high-efficiency panels work better with scattered light, which makes them good choices for places where clouds are common.

## Solar panels block light



### LONGi European Microsite 2025

**Direct Light:** This is the bright sunshine you feel on a clear summer day. **Diffuse Light:** This is the scattered, soft light you see on a cloudy day. Standard solar panels capture direct ...

### What to do if solar panels block sunlight , NenPower

When relocating solar panels or altering landscaping becomes impractical, several strategies can directly optimize energy capture while addressing light obstruction concerns. ...



### How to Mitigate the Adverse Effects of Solar Panel Shade ...

Solar panels are a cornerstone of renewable energy, harnessing the sun's power to generate electricity. These sleek, sun-kissed marvels silently convert sunlight into a potent ...

### Best Anti-Shading Solar Panels for Shaded Environments

Anti-shading solar panels are designed to maintain power output even when partially blocked by shadows. They use solar bypass diodes to reroute current around shaded ...



Warranty  
**10 years**

LiFePO<sub>4</sub>

Intelligent BMS

Wide Temp:  
-20°C to 55°C



## Blocking Diode And Bypass Diode For Solar ...

Solar panels are highly efficient when exposed to full sunlight, but real-world conditions are rarely perfect. From nearby trees and ...

## What to do if solar panels block sunlight

When relocating solar panels or altering landscaping becomes impractical, several strategies can directly optimize energy capture while ...



## Do Solar Panels Work When Partially Shaded?

How Do Photovoltaic Solar Panels Create Electricity? What Happens If Solar Panels Are Partially shaded? What Usually Causes Solar Panel Shading? Some Solar



**Panel Shading Solutions** A typical photovoltaic solar panels consists of a configuration of 32 to 72 solar cells that are connected series. This makes solar panels sensitive to partial shading. Shaded cells of a solar panel interrupt the energy flow in the grid, which forces other cells work harder to compensate for the loss. It happens because electrons in shaded solar ce See more on greentumble Anern Solar Online Store

## 9 Ways to Cut Solar Glare and Visual Impact, Backed by Data

Strategic landscaping is a highly effective and aesthetically pleasing way to obscure solar panels and block potential glare. Planting native trees and shrubs around the ...

### Solar Panels Cloudy Days: How They Really Work

Here's how solar panels work on cloudy days. Understand diffuse light capture, efficiency drops (10-25%), and why your solar energy system still generates power.



### Do solar panels work in the shade?

The fact that shadows are bad for solar panels seems obvious. But how bad are they exactly? Well, in the worst case scenario a ...



---

## Blocking Diode And Bypass Diode For Solar Panels

Solar panels are highly efficient when exposed to full sunlight, but real-world conditions are rarely perfect. From nearby trees and chimneys to clouds or dirt, shading is one ...



---

## Do solar panels work in the shade?

The fact that shadows are bad for solar panels seems obvious. But how bad are they exactly? Well, in the worst case scenario a small shadow on a corner of one panel could ...

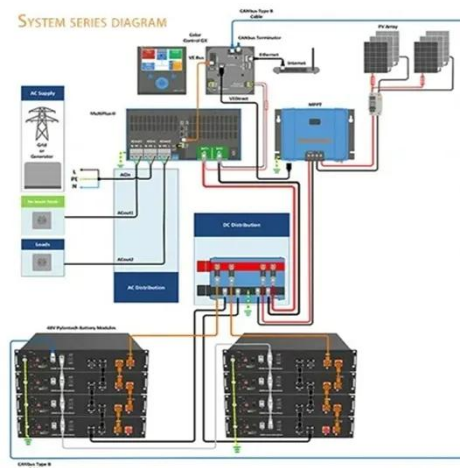
---

## 9 Ways to Cut Solar Glare and Visual Impact, Backed by Data

Strategic landscaping is a highly effective and aesthetically pleasing way to obscure solar panels and block potential glare. Planting native trees and



shrubs around the ...



## Installing clear acrylic sheet to reduce unwanted sunlight ...

The solar panels' high surface temperature, which is contrariwise correlated with the electrical output power, is the a highly significant factor impacting the photovoltaic electrical ...

## Do Solar Panels Work When Partially Shaded?

When even something so small like these barely visible particles carried by wind block light accessing the panel, what happens when your panels are shaded by bigger ...



## Contact Us

For catalog requests, pricing, or partnerships, please visit:  
<https://www.eqacc.co.za>