

EQACC SOLAR

Solar inverter installation distance



Overview

How far away should a solar panel inverter be?

When considering the solar panel inverter distance, one of the first things to remember is how far your inverter and battery are from the main electrical panel. For example, placing your inverter and battery in a guest house 100 feet away from the main panel can affect your system's performance. Voltage Drop and Efficiency.

How far should a solar panel inverter be from a guest house?

In conclusion, managing your solar panel inverter distance by storing the inverter and battery in a guest house and running the lines to the main panel over 100 feet is practical. This is true, provided the system is designed correctly.

How to choose a solar inverter location?

Options for your solar inverter location are crucial for optimal performance and longevity of your solar energy system. You need to consider factors such as accessibility for maintenance, proximity to the solar panels and electrical panel, as well as ventilation to prevent overheating.

What size wire should a solar panel inverter use?

When managing your solar panel inverter distance, the size of the wire you use becomes crucial. Larger gauge wires—such as 10 AWG or even 8 AWG—are commonly recommended for long-distance runs to minimize voltage loss. These thicker wires allow more current to flow with less resistance, making them more efficient over extended distances⁵.

Solar inverter installation distance



Optimal Inverter Placement in Residential ...

Ensure your solar inverter is placed in an area shielded from direct sunlight to keep it from overheating, optimising the unit's efficiency ...

Optimal Inverter Placement in Residential Settings

Ensure your solar inverter is placed in an area shielded from direct sunlight to keep it from overheating, optimising the unit's efficiency and lifespan. Prioritise a shaded, ...



How Far Can Solar Panels Be From the Inverter?

It is important to carefully evaluate a number of variables, such as voltage drop, cable size, and installation methods, in order to determine the maximum distance that solar ...

How Far Can Solar Panels Be From Inverter

Ideally, solar panels should be as close to the inverter and charge controller as possible. In situations where the panels are roof ...

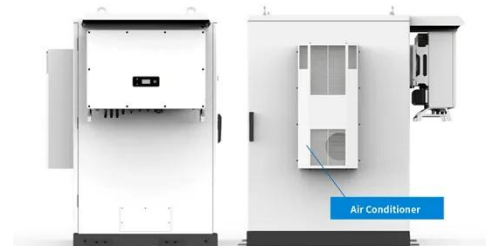


Solar Panel Inverter Distance: How Far Can They Be from ...

Is This Setup Practical? In conclusion, managing your solar panel inverter distance by storing the inverter and battery in a guest house and running the lines to the main panel ...

Solar Inverter Installation: Best Practices and Common ...

Panel-to-inverter distance: The farther your solar panels are from the inverter, the more careful your installer must be about voltage drop and wiring efficiency.



Distances from panels to inverter , DIY Solar Power Forum

With high voltage dc used on modern solar systems the distance between panels and inverters can be quite far 100s feet possible. Inverters and

batteries should be close to the ...



How Far Can Solar Inverter be From Main Panel? , Get Answers

The distance between the solar inverter and the main panel is determined by a number of factors, including cable length, inverter technology, and adherence to electrical codes.



How Far Can Solar Inverter be From Main ...

The distance between the solar inverter and the main panel is determined by a number of factors, including cable length, inverter ...

Where to put a solar inverter

Options for your solar inverter location are crucial for optimal performance and longevity of your solar energy system. You need to ...



Where Should You Place a Solar Inverter A Guide to Optimal Installation

Reducing the distance between the inverter and the panels helps minimize energy loss. Place the inverter closer to the solar panels to improve efficiency, and reduce installation ...

Where to put a solar inverter

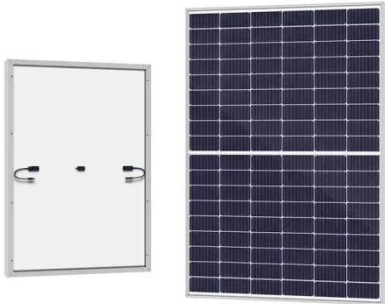
Options for your solar inverter location are crucial for optimal performance and longevity of your solar energy system. You need to consider factors such as accessibility for ...



How Far Can Solar Panels Be From Inverter

Ideally, solar panels should be as close to the inverter and charge controller as possible. In situations where the panels

are roof-mounted, this typically translates to anywhere ...



How Far Can Solar Inverter Be From Main Panel?

The ideal distance between solar panels and an inverter is crucial for minimizing energy loss and improving system performance. For roof-mounted systems, the distance between panels and ...



Contact Us

For catalog requests, pricing, or partnerships, please visit:
<https://www.eqacc.co.za>