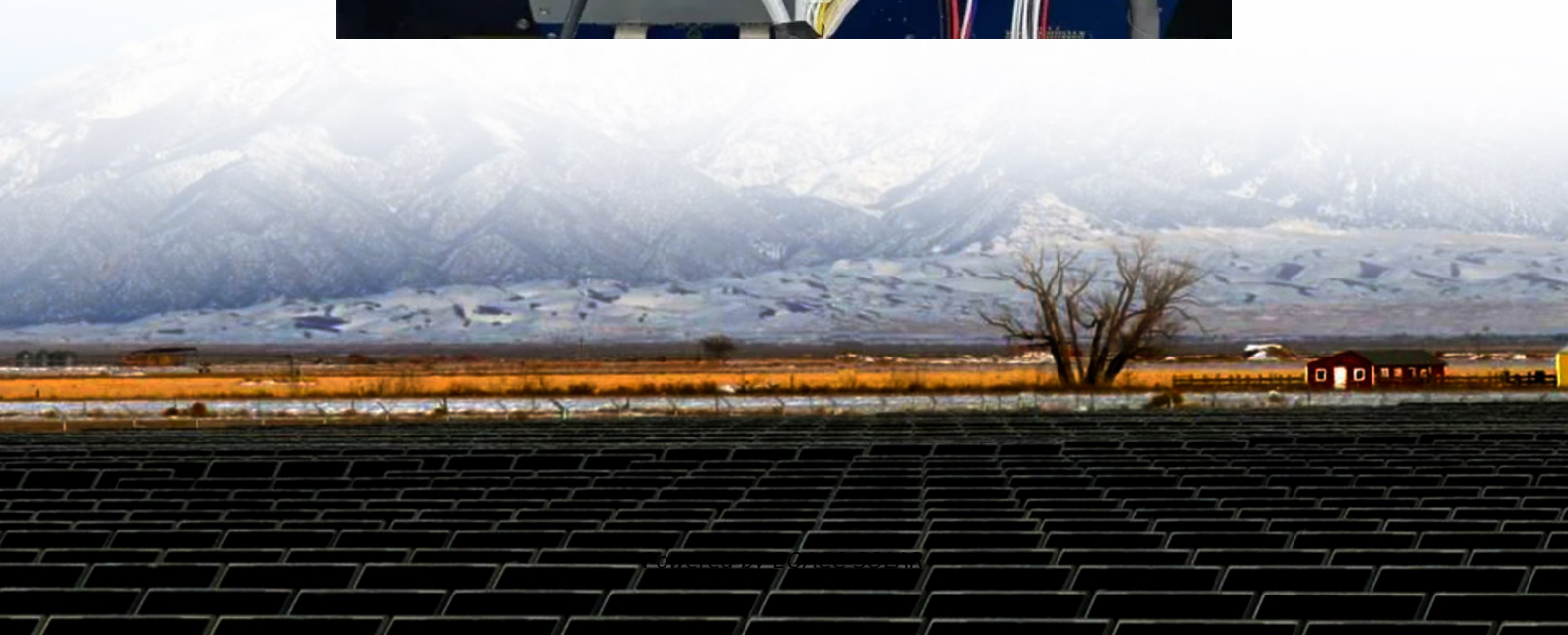


EQACC SOLAR

Replace the PV combiner box

GRADE A BATTERY

LiFePO₄ battery will not burn when overcharged, over discharged, overcurrent or short circuit and can withstand high temperatures without decomposition.



Overview

What is a PV combination box?

What is a PV Combiner Box?

A PV Combiner Box is a device that brings together the output from multiple solar panel strings and channels it into a single output going to the inverter. It simplifies wiring, improves safety, and keeps your solar setup neat and manageable. In a typical solar power system, each string of panels generates DC electricity.

What is a solar combiner box?

Solar combiner boxes are essential components in solar photovoltaic (PV) systems, designed to consolidate the outputs of multiple solar panel strings into a single output for connection to an inverter. There are various types of combiner boxes tailored to meet specific needs and configurations in solar installations. Here are the primary types:.

What is a photovoltaic combiner box?

Photovoltaic combiner boxes play a crucial role in solar panel systems, especially in larger installations. They serve as a centralized point where wirings from multiple panels are combined. This allows for a more organized and safer electrical setup.

Why should you choose a PV combiner box?

For equipment safety, there are fuses in PV combiner boxes that can minimize overcurrent. Therefore, there is no need to worry about your system failing, nor do you have to be concerned about electrical problems. + Monitoring: The advanced combiner boxes come with some special monitoring devices.

Replace the PV combiner box



Everything You Need to Know About PV ...

A PV combiner box is an essential component in any solar system and there are several parameters kindly remember there are a ...

The Ultimate Guide to Solar Combiner Boxes: ...

Explore the comprehensive guide to PV Solar Combiner Boxes: Learn about types, components, selection criteria, installation best ...



How to replace a faulty component in an Inverter Combiner Box?

An Inverter Combiner Box is a key component in a PV system that combines the DC output from multiple PV strings and delivers it to the inverter. It typically contains fuses, ...

Everything You Need to Know About PV Combiner Boxes: A ...

A PV combiner box is an essential component in any solar system and there are several parameters kindly remember there are a few parameters which need to be checked in ...

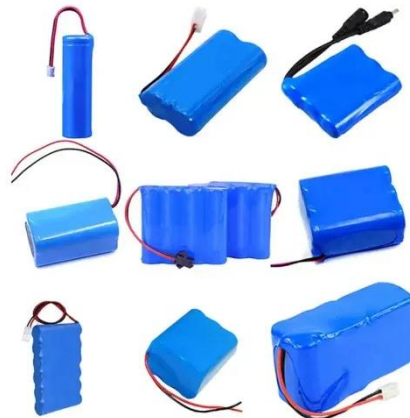


How to install a combiner box properly?

A combiner box is a crucial component in photovoltaic (PV) systems, playing a significant role in collecting and combining the DC power output from multiple solar panels.

The Ultimate Guide to Solar Combiner Boxes: From Basics to ...

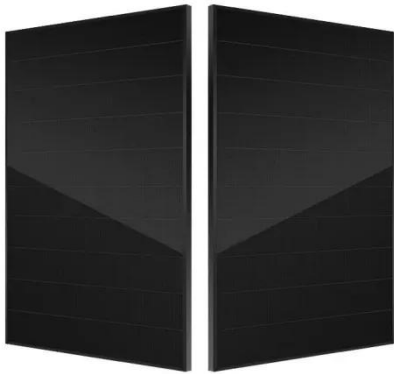
Explore the comprehensive guide to PV Solar Combiner Boxes: Learn about types, components, selection criteria, installation best practices, maintenance, and advanced ...



Solar PV Combiner Box: Your Go-To Guide

What is a Solar PV Combiner Box?
Alright, first things first: what exactly is a solar PV combiner box? Think of it as a central hub, a sort of traffic controller for

the electricity ...



What are the Key Steps and Precautions When Installing PV Combiner Boxes?

During the installation of photovoltaic systems, the correct installation of combiner boxes is a key link to ensure the efficient and safe operation of the system. As a device for ...



Everything You Need to Know About PV Combiner Box

Learn everything about PV Combiner Boxes--how they work, key components, installation tips, and FAQs to optimize your solar power system safely and efficiently.



Ultimate Guide: PV Combiner Boxes, Isolators, Disconnects

Smart picks for PV Combiner Boxes, Solar Isolators, DC Disconnects--cut risk and lift uptime with data-backed steps.



How to replace a faulty component in an ...

An Inverter Combiner Box is a key component in a PV system that combines the DC output from multiple PV strings and delivers it to the ...

Understanding PV Combiner Boxes: Design, Function, ...

A complete guide to PV combiner boxes, covering structure, safety protection, monitoring, IP ratings, selection principles, and future smart trends. Learn how advanced ...



What You Should Know about PV Combiner ...

Any good solar installation starts with choosing the right PV combiner box. Discover the key factors involved in picking the right one.



What are the Key Steps and Precautions ...

During the installation of photovoltaic systems, the correct installation of combiner boxes is a key link to ensure the efficient and safe ...



Efficient Higher Revenue

- Max. Efficiency 97.5%
- Max. PV Input Voltage 1000V
- 150% Peak Output Power
- 2 MPPT Trackers, 100% DC Input Oversizing
- Max. PV Input Current 15A, Compatible with High Power Modules

Intelligent Simple O&M

- IP65 Protection Degree: support outdoor installation
- Smart I-V Curve Diagnosis Function: locate PV string faults accurately and automatically detect faults
- DC & AC Type II SPD: prevent lightning damage
- Battery Reverse Connection Protection

Flexible Abundant Configuration

- Plug & Play, EPS Switching Under 10ms
- Compatible with Lead-acid and Lithium Batteries
- Max. 6 Units Inverters Parallel
- AFCI Function (Optional): when an arc fault is detected the inverter immediately stops operation



What You Should Know about PV Combiner Box , CHINT global

Any good solar installation starts with choosing the right PV combiner box. Discover the key factors involved in picking the right one.

Contact Us

For catalog requests, pricing, or partnerships, please visit:
<https://www.eqacc.co.za>