

EQACC SOLAR

Relationship between the number of solar panels and inverters



Overview

What factors affect a solar inverter?

Panel Wattage: Consider the wattage of the solar panels; for example, a 300W panel will affect how many can be connected to an inverter with a specific capacity. **System Design:** Proper system design is crucial; factors such as panel orientation and shading will also impact overall performance and inverter load.

Can a solar system have multiple inverters?

A: Yes, using multiple inverters is a common approach for larger solar panel systems. In this setup, the system can be designed with several inverters, allowing you to connect more panels overall. Each inverter can manage a specific number of panels, and this can enhance system performance and efficiency.

Should solar panels be matched with inverters?

This article explores the critical aspects of matching solar panels with inverters, detailing the risks of overloading, the importance of correct sizing, and effective strategies for managing extra panels, such as upgrading inverters or using microinverters to optimize solar energy systems.

How to choose a solar inverter?

You can expect that the inverter should match or slightly exceed the combined wattage produced by the solar panels. Therefore, if you have an array of 20 solar panels, each with a capacity of 300 watts, the total output will be 6000 watts, which is an important benchmark for choosing your inverter.

Relationship between the number of solar panels and inverters



How Many Panels Can I Put on My Inverter?

If you're wondering how many solar panels you can put on your inverter, the answer is: it depends. The capacity of an inverter is measured in kilowatts (kW), and most ...

How Many Solar Panels Can One Inverter ...

This calculation helps determine the ideal number of solar panels that can be connected in series, ensuring seamless integration ...



How Many Inverters Do I Need for Solar Panels? Find Out Fast

When installing solar panels, a key question is how many inverters are needed. The number depends on factors like solar array size, inverter type, and your home's needs. In ...



How Many Solar Panels Can I Connect to an ...

Connecting the right number of solar panels to your inverter is about more than just filling space on your roof--it's essential for making ...

12.8V 200Ah



Outdoor Cabinet BESS
50 kWh/500 kWh Battery Storage System
Industrial and Commercial Energy Storage



- All In One**
Integrating battery packs
- High-capacity**
50-500kWh
- Degree of Protection**
IP54
- Operating Temperature Range**
-20~60°C (Derating above 50 °C)
- Intelligent Integration**
Integrated photovoltaic storage cabinet
- Rated AC Power**
50-100kW
- Altitude**
3000m(>3000m derating)

Relationship between the number photovoltaic panels ...

Solar panel wattage is the total amount of power the solar panel can produce in a given time. It is usually measured in watts and calculated by multiplying the solar panel's voltage, amperage, ...

How Many Panels Can I Put on My Inverter?

If you're wondering how many solar panels you can put on your inverter, the answer is: it depends. The capacity of an inverter is ...



Is it Safe to Have Too Many Solar Panels on an Inverter?

This article explores the critical aspects of matching solar panels with inverters, detailing the risks of overloading, the importance of correct sizing, and

effective strategies for ...



How Many Inverters Do I Need for Solar Panels? A ...

Furthermore, advanced technologies such as hybrid inverters enable integration with battery storage, allowing for a seamless transition between solar and grid power. ...



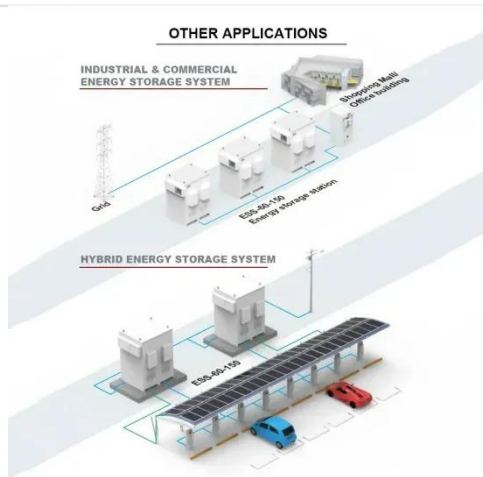
How Many Inverters Do I Need for Solar ...

When installing solar panels, a key question is how many inverters are needed. The number depends on factors like solar array ...

How many solar panels can an inverter handle

Solar panels are a crucial component of your solar energy system, but understanding how many can be connected to your inverter is crucial for

optimal performance. ...



How many solar panels are needed for a 1000 ...

Before determining the number of solar panels, we need to understand the relationship between solar panels and inverters. Solar ...

How Many Solar Panels Can I Connect to an Inverter? A ...

Learn how to optimize your solar power system by understanding how many solar panels can be connected to an inverter. Explore inverter specifications, wiring configurations, ...



How Many Solar Panels Can I Connect to an ...

Learn how to optimize your solar power system by understanding how many solar panels can be connected to an inverter. ...



How many solar panels are needed for a 1000-watt power ...

Before determining the number of solar panels, we need to understand the relationship between solar panels and inverters. Solar panels are responsible for converting ...

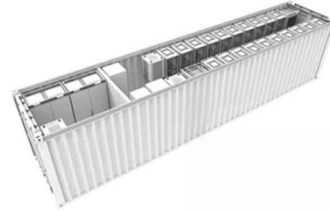


How Many Solar Panels Can I Connect to an Inverter?

Connecting the right number of solar panels to your inverter is about more than just filling space on your roof--it's essential for making your system work efficiently, safely, and ...

How many solar panels can an inverter ...

Solar panels are a crucial component of your solar energy system, but understanding how many can be connected to your inverter is ...



How Many Solar Panels Can One Inverter Handle?

This calculation helps determine the ideal number of solar panels that can be connected in series, ensuring seamless integration between the solar panels and the inverter. ...

Contact Us

For catalog requests, pricing, or partnerships, please visit:
<https://www.eqacc.co.za>