

EQACC SOLAR

Power station generators flooded



Overview

What happens if a power line is submerged in a flood?

Waterlogged underground cables and electrical vaults become inoperable. Storm surges can inundate low-lying areas, submerging power lines and causing short circuits, leading to prolonged power disruptions. 3. Safety Hazards: Fallen power lines pose electrocution risks, especially when submerged in floodwaters.

Do weather conditions affect power plant outages?

Using a granular panel dataset of daily power plant outages and local weather conditions (2017–2023), we assess the influence of extreme temperatures, floods, and droughts on outage risks. We distinguish between forced and planned outages to identify how operators anticipate or react to weather-related stress.

Are hydroelectric plants vulnerable to droughts and floods?

Additionally, we propose that hydroelectric plants are particularly susceptible to both droughts and floods due to their reliance on water availability. Drought conditions can lead to insufficient water flow for electricity generation, while floods can damage infrastructure and necessitate operational shutdowns.

How does water runoff affect hydro power plants?

Hydro-power technologies We find that hydropower generation plants are primarily affected by variations in water runoff rather than extreme temperatures, though some temperature effects emerge for specific plant types.

Power station generators flooded

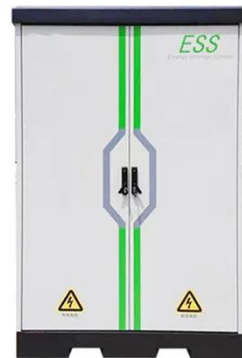


What to Do If Generator is Flooded: Essential Recovery Tips

Flooded generators often have too much fuel inside. This excess fuel can cause problems. It may lead to engine damage or starting issues. Draining excess fuel is essential. It ensures your ...

Weather-induced power plant outages: Empirical evidence ...

This paper investigates how extreme weather conditions affect power generators across Europe, with a focus on the differing vulnerabilities and adaptive responses of ...

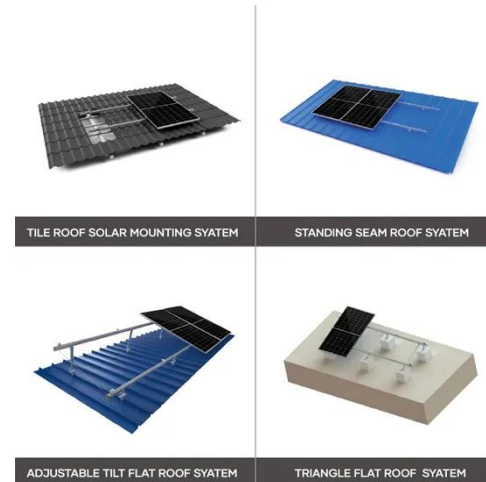


Flood Control For Power Plants & Electrical Stations -- ...

Garrison flood barriers can help you contain and re-route water away from sensitive and expensive power plants and electrical stations, and provide protection from major flood events ...

What Precautions Should I Take When Using ...

Learn essential precautions when using a generator during flood-induced power outages. Follow safety measures for proper placement, fuel safety, ...

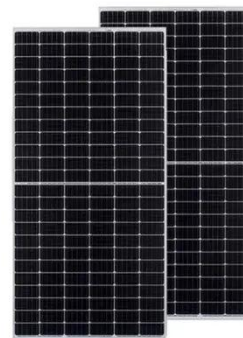


What Precautions Should I Take When Using A Generator During Power

Learn essential precautions when using a generator during flood-induced power outages. Follow safety measures for proper placement, fuel safety, connection, operation, and preventing ...

7 Generator Problems That Could Surface ...

Why Generators Fail After a Storm Heavy rain, wind, flooding, power surges, and debris can all affect the sensitive components inside ...



Flooded Hydro Power Station - International Recovery Services

Industry: 150 Megawatt Hydro Electric Power Station Location: Attapeu, Laos Circumstances: Following typhoon Ondoy

the Sekong river rose several meters causing severe flooding to the ...

PUSUNG-R (Fit for 19 inch cabinet)



What Happens to a Generator in a Flood? -- True Gear

Generators and floods go together like toast and a bathtub -- a pairing that's bound to end badly. In short, a soaked generator can mean short circuits, corrosion, and ...



12.8V 200Ah



1 dead, 8 still trapped in SW China's flooded power station

One was confirmed dead and eight were still trapped after a flooding occurred in the building of a power station in Ganzi Tibetan Autonomous Prefecture, southwest China's ...

Stronger typhoons, weaker electricity systems? A review of ...

Typhoons affect critical components of the electricity system, such as power stations, generators, transmission towers, overhead lines, underground

cables, and ...

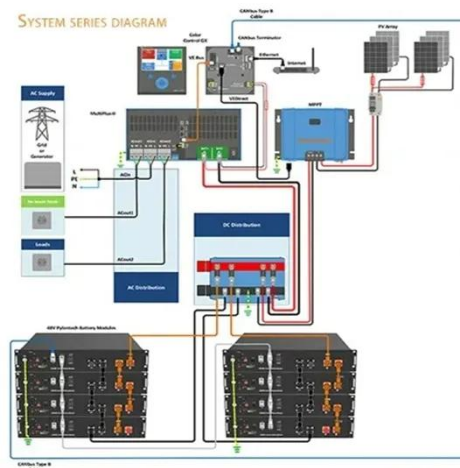


7 Generator Problems That Could Surface After a ...

Why Generators Fail After a Storm Heavy rain, wind, flooding, power surges, and debris can all affect the sensitive components inside your generator. Even the most durable ...

What to Do if Diesel Generator Set is Flooded?

When water enters the diesel generator set, the user must take necessary measures in time, disconnect the external power supply and battery connection line, do not ...



What to Do if Diesel Generator Set is ...

When water enters the diesel generator set, the user must take necessary measures in time, disconnect the external power supply and ...



What to Do If Generator is Flooded: Essential ...

Flooded generators often have too much fuel inside. This excess fuel can cause problems. It may lead to engine damage or starting issues. ...



Contact Us

For catalog requests, pricing, or partnerships, please visit:
<https://www.eqacc.co.za>