

## EQACC SOLAR

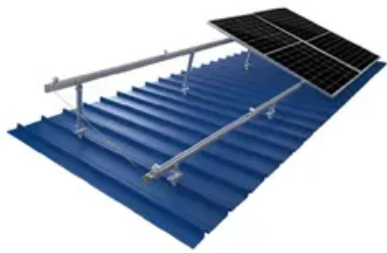
# Outdoor power field data



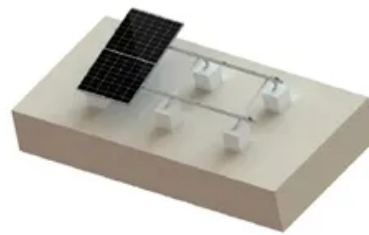
TILE ROOF SOLAR MOUNTING SYATEM



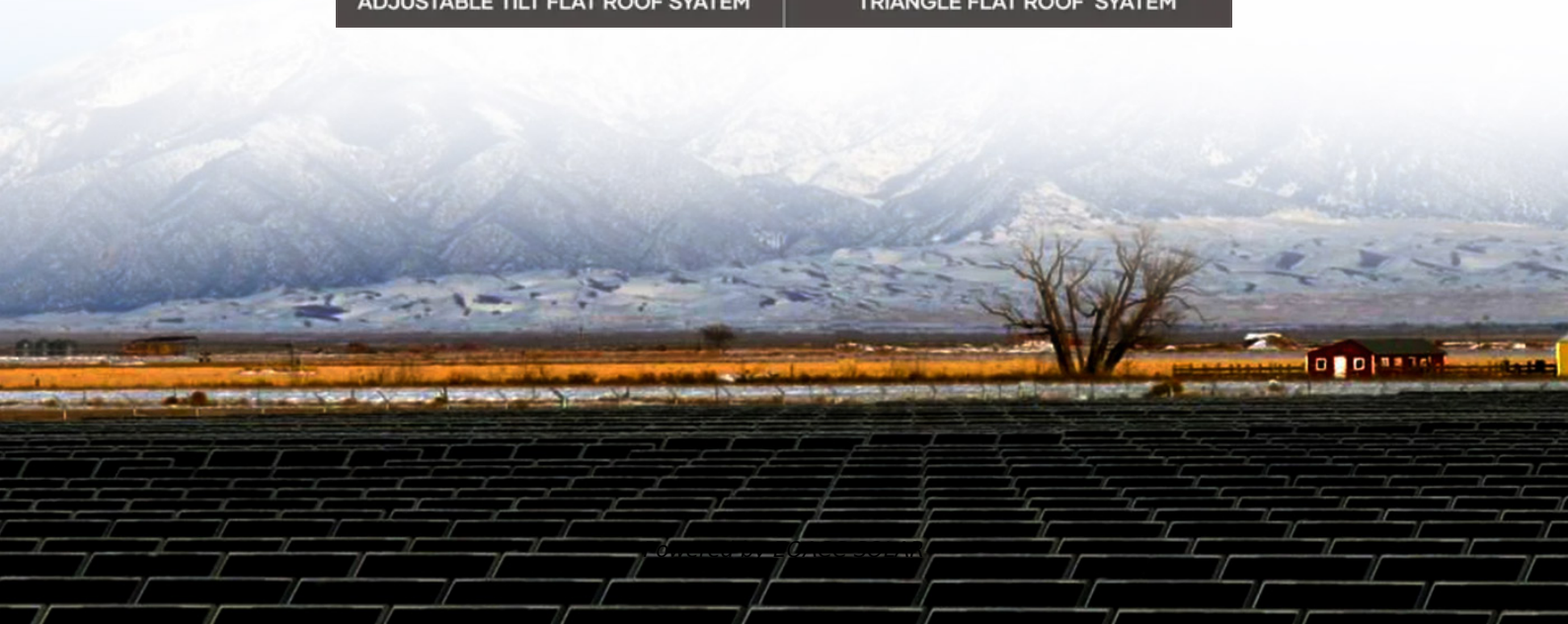
STANDING SEAM ROOF SYATEM



ADJUSTABLE TILT FLAT ROOF SYATEM



TRIANGLE FLAT ROOF SYATEM



## Overview

---

What are outdoor performance measurements used for?

In our outdoor measurements, we observe differences in performance metrics from daily and seasonal fluctuations produce maximum variations on the order  $\pm 1\%$ . Applications may include but are not limited to reliability studies, impeding fault detection, and performance monitoring.

What is power geospatial data?

Providing the capability to conduct comparative analysis between different data parameters and additional integrated tools like pixel filtering and map location identify. The POWER geospatial data services are hosted in partnership with the Registry of Open Data on AWS (RODA) and NASA Earthdata GIS (EGIS).

Are PV modules based on peak power or energy yield?

Currently different PV technologies, including industry-leading Si and CdTe, compete on the basis of peak power (\$/W) rather than energy yield. Energy yield, though, is the key figure of merit for the economic return of the ultimate customers of PV modules: the system operators and independent electricity producers.

What data is used to calculate solar energy output?

Module temperature is used to generate temperature-corrected IV data, based on existing solar cell data. 35, 36 Spectrum- and temperature-dependent IV, QE, and satellite-based irradiance data are then used to calculate the energy output of the solar cell.

## Outdoor power field data

---



### Outdoor PV Module And System Testing ...

As part of the "TruePower Alliance", which was initiated and is driven by SERIS, the institute operates high-precision outdoor testing facilities for ...

[Get Price](#)

### Outdoor Efficiency Measurements and Test Fields

Current/voltage characteristics, power and module temperature and weather data are captured synchronously. The collected data can be classified on the basis of a number of quality criteria ...



[Get Price](#)



### Monitoring of Photovoltaic System Performance Using Outdoor ...

Outdoor Suns-V OC measurements on large systems have the potential to provide the same metrics as indoor Suns-V OC, enabling observations of these same degradation ...

[Get Price](#)

## Climatic Specific Energy Rating Analysis of ...

Then, we analysed long-term outdoor field data of the same device for a period of 36 consecutive months in order to understand how ...

[Get Price](#)



## CLIMATE SPECIFIC ENERGY RATING (CSER) ANALYSIS OF OUTDOOR PV FIELD DATA

In the present study, we analysed long-term outdoor field data for a period of 36 consecutive months of a PV module in order to understand how the length (and seasonality) of ...

[Get Price](#)

## Climatic Specific Energy Rating Analysis of Outdoor PV Field Data

Then, we analysed long-term outdoor field data of the same device for a period of 36 consecutive months in order to understand how the length and seasonality of the data ...

[Get Price](#)



## Global Prediction of Photovoltaic Field Performance Differences Using



In this study, we map photovoltaic system performance over the entire planet, for standard and emerging technologies, using open-source satellite data. We validate results ...

[Get Price](#)

## PV Reference Cells for Outdoor Use: Comparison of First ...

Executive Summary Reference cells are widely used in the photovoltaic (PV) industry to measure irradiance. For field applications and outdoor use a variety of products are ...

[Get Price](#)

Test certification  
CE FC



## Monitoring of Photovoltaic System ...

Outdoor Suns-V OC measurements on large systems have the potential to provide the same metrics as indoor Suns-V OC, enabling ...

[Get Price](#)

## NASA POWER , Data Access Viewer (DAV)

The NASA POWER project's Data Access Viewer (DAV) is an interactive web-mapping application providing access to

NASA solar and meteorological data.

[Get Price](#)



## Outdoor PV Module And System Testing Facilities In ...

As part of the "TruePower Alliance", which was initiated and is driven by SERIS, the institute operates high-precision outdoor testing facilities for PV modules and systems in different ...

[Get Price](#)

## Plausibility Filtering of PV Outdoor Data

High-quality input data is necessary for calculating performance loss and predicting energy output and the lifetime of photovoltaic (PV) modules. Therefore, filtering PV outdoor ...

[Get Price](#)



## Data and Tools , Photovoltaic Research , NLR

NLR develops data and tools for modeling and analyzing photovoltaic (PV) technologies. View all of NLR's solar-

related data and tools, including more PV-related ...

[Get Price](#)



---

## Contact Us

For catalog requests, pricing, or partnerships, please visit:  
<https://www.eqacc.co.za>