

EQACC SOLAR

Majors related to base station wireless communication

Nominal Capacity

280Ah

Nominal Energy

50kW/100kWh

IP Grade

IP54



Overview

What is a base station in a wireless network?

At the heart of wireless communication networks are base stations, which act as the gateway between wireless devices and the network infrastructure. Base stations are responsible for transmitting and receiving data to and from wireless devices, as well as managing network resources and ensuring reliable and efficient communication.

Why are base stations important?

Base stations are the backbone of wireless communication networks, playing a pivotal role in signal transmission, network reliability, and high-speed data connectivity. As technology evolves, the importance of base stations will continue to grow, addressing new challenges and supporting the ever-expanding demand for wireless communication services.

What is a base station in telecommunications?

In telecommunications, a base station is a fixed transceiver that serves as the main communication point for one or more wireless mobile client devices. It not only connects wireless devices to each other but also links them to other networks or devices, often through dedicated high-bandwidth wired or fiber optic connections.

How does a wireless device communicate with a base station?

When a wireless device, such as a mobile phone, communicates with a base station, the device sends a signal to the base station, which converts the signal into digital form and sends it to the network. Similarly, when the network sends data to the device, the base station converts the digital data into a wireless signal that the device can receive.

Majors related to base station wireless communication

To Strive forward No Energy Waste



- ✓ All in one
- ✓ 100~215kWh High-capacity
- ✓ Intelligent Integration

What Are Base Station Antennas? Complete ...

In modern telecommunications systems, the base station antenna stands out as an undeniable and crucial component to facilitate ...

Understanding Base Stations: The Backbone of Wireless Communication

Conclusion Base stations are the backbone of modern wireless communication networks. They ensure that mobile devices can connect to the internet, make calls, and send ...



The Base Station in Wireless Communications: ...

Base station, also known as BTS (Base Transceiver Station), is a key device in wireless communication systems such as GSM. ...

BS (Base Station)

A base station (BS) is a key component of modern wireless communication networks, providing the interface between wireless devices and the network infrastructure. In ...



DETAILS AND PACKAGING



1 USER MANUAL PDF 2 RJ45 Cable For RS485/CAN 3 Battery in Parallel Cables
4 RJ45 TO USB Monitor Cable 5 M8 Terminal*4

Wireless Communication Base Station Location Selection ...

1. Introduction Recently, with the rapid development of wireless communication technology, the enhancement of wireless network performance is concerned with meeting the ...

What Are Base Station Antennas? Complete Guide

In modern telecommunications systems, the base station antenna stands out as an undeniable and crucial component to facilitate our daily communication from voice calls to ...



What Is A Base Station?

A base station is an integral component of wireless communication networks, serving as a central point that manages the transmission and reception of signals between ...

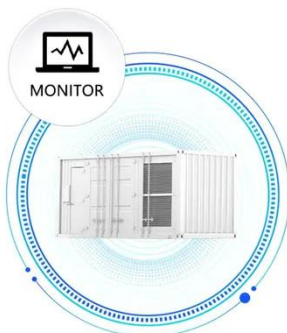


What is a Base Station? -- From Communication Core to ...

Base stations are the core of mobile communication, and with the rise of 5G, thermal and energy challenges are increasing. This article explains the definition, structure, ...



SUPPORT REAL-TIME ONLINE
MONITORING OF SYSTEM STATUS

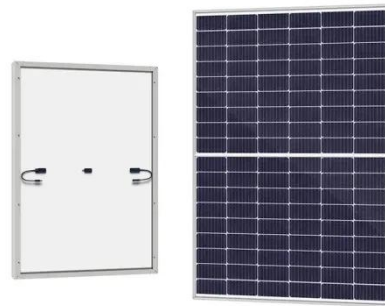


The Base Station in Wireless Communications: The Key to ...

Base station, also known as BTS (Base Transceiver Station), is a key device in wireless communication systems such as GSM. Equipped with an electromagnetic wave ...

BS (Base Station)

A base station (BS) is a key component of modern wireless communication networks, providing the interface between wireless ...



Base Stations

The present-day tele-space is incomplete without the base stations as these constitute an important part of the modern-day scheme of wireless communications. They are ...

What Is the Role of a Base Station in Wireless Communication?

Base stations are the backbone of wireless communication networks, playing a pivotal role in signal transmission, network reliability, and high-speed data connectivity. As ...



Cellular Network Base Stations: The Backbone of Wireless Communication

At the heart of this infrastructure are cellular network base stations, the unsung heroes of our wireless world.

This essay delves into the multifaceted world of these vital components, ...



Contact Us

For catalog requests, pricing, or partnerships, please visit:
<https://www.eqacc.co.za>