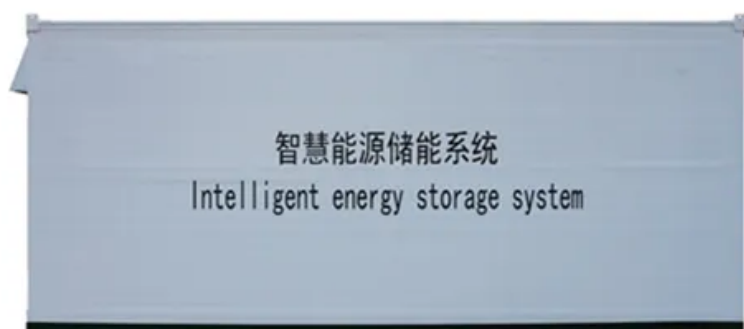


EQACC SOLAR

Magadan inverter 12v to 220v



Overview

What is a 12V inverter?

A 12V inverter is an electronic device that converts 12V DC power into 220V AC power. This type of inverter is typically used to convert automotive or other 12V DC power sources into standard household or industrial power to power a variety of devices. inverter.com provides inverters from 300w to 3000w.

What is a 12V 300 watt inverter?

12V 300-watt power inverter for sale. The modified sine wave inverter delivers 600-watt peak power and converts 12V DC from battery or car lighter to AC 110V or 220V household power. Come with a USB port, 12V to 110V inverter can be a universal outlet for fast-charging electronic devices.

What is a 12V to 220V inverter?

Our 12V to 220V inverters are designed to provide you with reliable power conversion, ensuring that your 12V devices can operate seamlessly on 220V power. These inverters are not just any ordinary power converters; they are designed with advanced technology to deliver consistent performance and efficiency.

What is a modified sine wave power inverter?

This type of inverter is typically used to convert automotive or other 12V DC power sources into standard household or industrial power to power a variety of devices. inverter.com provides inverters from 300w to 3000w. Modified sine wave power inverter can provide you 110/120V or 220/230V/240V AC power with high efficiency and reliability.

Magadan inverter 12v to 220v



pure sine wave inverter 12V to 220V 1600W 2200W 3000W ...

Buy pure sine wave inverter 12V to 220V 1600W 2200W 3000W 4000W DC to AC voltage converter 12 220 mini-car power supply at Aliexpress for . Find m1102 and 5 ...

Changi Pure Sine Wave Power Inverter 12V to ...

Product details * High quality DC to AC pure sine wave. * The main control chip adopts high-speed and stable MCU, intelligent control, ...



Shop Inverter 12V to 220V Pure Sine Wave

Buy premium 12V to 220V inverters -- pure & modified sine wave, 300W-10000W, for solar, car, and off-grid use. Fast shipping, ...

12V To 220V Inverter

A 12V to 220V inverter is a device that converts a low-voltage DC power (typically from a car battery or a small generator) into AC power that can be used to run household appliances and ...



Amazon : Power Converter 12 Volt To 220

High-Power 4000W DC to AC Power Inverter - 12V to 110V/220V Converter with Dual USB Ports, Universal AC Outlet, LED Display for Cars, Trucks, RVs, and Home Backup

Changi Pure Sine Wave Power Inverter 12V to 220V 2500W ...

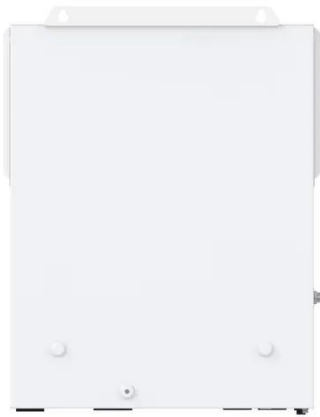
Product details * High quality DC to AC pure sine wave. * The main control chip adopts high-speed and stable MCU, intelligent control, real-time monitoring, AC output ...



12v Inverter, 12v DC to 110v/220v AC Power Inverter , inverter...

A 12V inverter is an electronic device that converts 12V DC power into 220V AC power. This type of inverter is typically used to convert automotive or

other 12V DC power sources into standard ...



Inverter 12V 220V

A DIY inverter 12v to 220v kit can take 12v DC and convert it to 220v AC for much less, an option for the budget-conscious and do-it-yourselfers. The affordability of a 220v ...



Inverter 12V 220V

A DIY inverter 12v to 220v kit can take 12v DC and convert it to 220v AC for much less, an option for the budget-conscious and do-it-yourselfers. The affordability of a 220v power inverter ...



Amazon : Pure Sine Wave Inverter 12V to 220V 3000W ...

This pure sine wave inverter is a current converter that converts 12V/24V/48V/60V DC to 220V AC. The output power can be used for a variety

of devices, making it the ultimate car charger ...

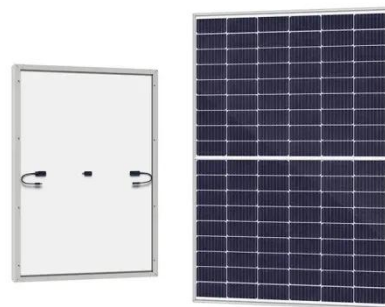


pure sine wave inverter 12V to 220V 1600W 2500W 3500W ...

pure sine wave inverter 12V to 220V
1600W 2500W 3500W 4500W DC to AC
voltage converter 12 220 mini-car power
supply 4.7 17 Reviews ? 302 sold US
\$39.00 57% off US \$92.87 Tax ...

Shop Inverter 12V to 220V Pure Sine Wave , Top Suppliers

Buy premium 12V to 220V inverters --
pure & modified sine wave,
300W-10000W, for solar, car, and off-
grid use. Fast shipping, customization,
and 100% on-time delivery.



12V To 220V Inverter

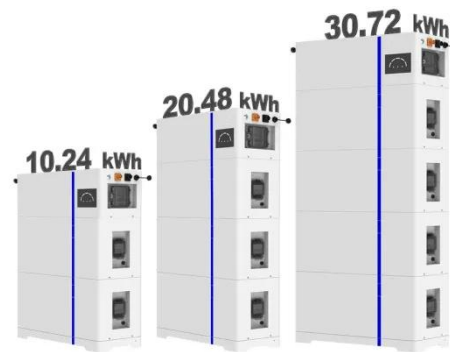
A 12V to 220V inverter is a device that
converts a low-voltage DC power
(typically from a car battery or a small
generator) into AC power that can ...



ESS

High-Power 12V DC to 220V AC Modified Sine Wave Inverter

Power inverter converts 12V or 24V DC from battery or car lighter to AC 110V or 220V household power, with USB port and AC outlet for fast charging the electronic devices. ...



pure sine wave inverter 12V to 220V 1600W ...



Buy pure sine wave inverter 12V to 220V 1600W 2200W 3000W 4000W DC to AC voltage converter 12 220 mini-car power supply at Aliexpress for

Contact Us

For catalog requests, pricing, or partnerships, please visit:
<https://www.eqacc.co.za>