

EQACC SOLAR

Inverter voltage square wave



Overview

What is a square wave inverter?

In this topic, you study Square Wave Inverter – Definition, Circuit Diagram & Waveform. Square Wave Inverter is an electrical circuit, converts a fixed voltage DC to a fixed (or variable) square wave AC voltage with variable frequency. The full-bridge configuration of a Square Wave Inverter is shown in Fig. 1 (a).

What is square wave voltage source inverter Fed induction motor drive?

Square Wave Voltage Source Inverter Fed Induction Motor Drive is a kind of dc link converter, which is a two stage conversion device. A three phase supply is first rectified using a rectifier on the line side. The rectified dc is inverted to ac of desired frequency by an inverter on the load side, as shown in Fig. 4.22.

What is the speed control range of a square wave inverter?

The speed control range of the Square Wave Voltage Source Inverter Fed Induction Motor operating on a square wave inverter is 1 : 20. The polarity of the dc link voltage cannot be changed. Hence during regeneration the current direction in the link circuit must be reversed.

What is an inverter bridge?

The inverter bridge (H-bridge) is a method of producing a square wave from a DC voltage. The operation of a basic H-bridge is enhanced to produce the misnamed modified sine wave, which is shown in Figure 5. (Perhaps modified square wave would be a better name.)

Inverter voltage square wave



CHAPTER 2

2.2 Voltage Control in Single - Phase Inverters The schematic of inverter system is as shown in Figure 2.1, in which the battery or rectifier provides the dc supply to the inverter. ...

Lecture 17: Inverters, Part 1

$V_x(t) = V_n \sin(n\omega t)$ n odd Ex. @ $f = 0$
 $2v_{dc} \rightarrow$ square wave $V_x(t) = \sum_{n, \text{odd}} \sin(n\omega t)$ n fundamental, 3rd, 5th, 7th, etc
 If load filters out harmonics VL more pure than ...



What is a Square Wave Inverter?

It is a type of modified sine wave inverter that uses a multivibrator to generate square wave pulses at a fixed frequency in the output. This helps to convert the DC voltage or ...

The inverter output voltage square wave

Download scientific diagram , The inverter output voltage square wave from publication: Extension of Zero Voltage Switching range for series ...



Square Wave Inverter - Electricity - Magnetism

Square wave inverters have high harmonic content due to their abrupt voltage transitions. Harmonic distortion can cause various issues, including increased heating in ...

6.4. Inverters: principle of operation and parameters

Also, transformers are used here to vary the output voltage. Combination of pulses of different length and voltage results in a multi-stepped modified square wave, which closely matches the ...



Inverter Types & Working Principle , Sine Wave, Square ...

How Does An Inverter Work? Modular Inverters System Square Wave Inverter Working Modified Sine Wave Inverter



Deye inverters and Deye batteries are more compatible.

WorkingSingle-Phase Sine Wave Inverter
 WorkingBasic Operation of The Sine Wave Inverter
 Three-Phase Inverter
 WorkingA switching circuit is used in the conversion of DC voltage to an alternating (or bipolar) square wave voltage. One method is the use of the inverter bridge (also known as an H-bridge), which is illustrated in Figure 4. The switch symbols are used to represent switching transistors (IGBTs or MOSFETs) or other types of electronic switching devices. See more on electricalacademia psu

6.4. Inverters: principle of operation and parameters

Also, transformers are used here to vary the output voltage. Combination of pulses of different length and voltage results in a multi-stepped modified square wave, which closely matches the ...

An overall introduction of inverter waveform and the ...

A square wave is a periodic inverter waveform signal whose voltage alternates between two different levels. Square waves are characterized by instantaneous switching ...



Square Wave Inverter - Definition, Circuit Diagram & Waveform

In this topic, you study Square Wave Inverter - Definition, Circuit Diagram & Waveform. Square Wave Inverter is an electrical circuit, converts a fixed voltage DC to a fixed ...



Inverter Types & Working Principle , Sine Wave, Square Wave...

The article provides an overview of inverter technology, explaining how inverters convert DC to AC power and detailing the different types of inverters--sine wave, square ...

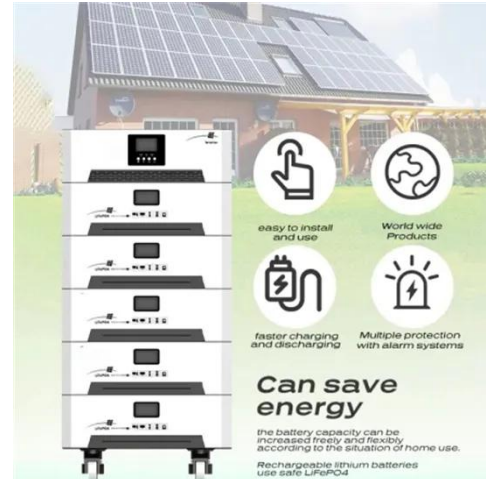


The inverter output voltage square wave

Download scientific diagram , The inverter output voltage square wave from publication: Extension of Zero Voltage Switching range for series resonant converter , This paper describes the ability

What is a Square Wave Inverter?

It is a type of modified sine wave inverter that uses a multivibrator to generate square wave pulses at a fixed frequency in the ...



Square Wave Voltage Source Inverter Fed ...

Square Wave Voltage Source Inverter Fed Induction Motor Drive: Square Wave Voltage Source Inverter Fed Induction Motor Drive is a kind of dc ...

Square Wave Voltage Source Inverter Fed Induction Motor ...

Square Wave Voltage Source Inverter Fed Induction Motor Drive: Square Wave Voltage Source Inverter Fed Induction Motor Drive is a kind of dc link converter, which is a two stage ...



Contact Us

For catalog requests, pricing, or partnerships, please visit:
<https://www.eqacc.co.za>