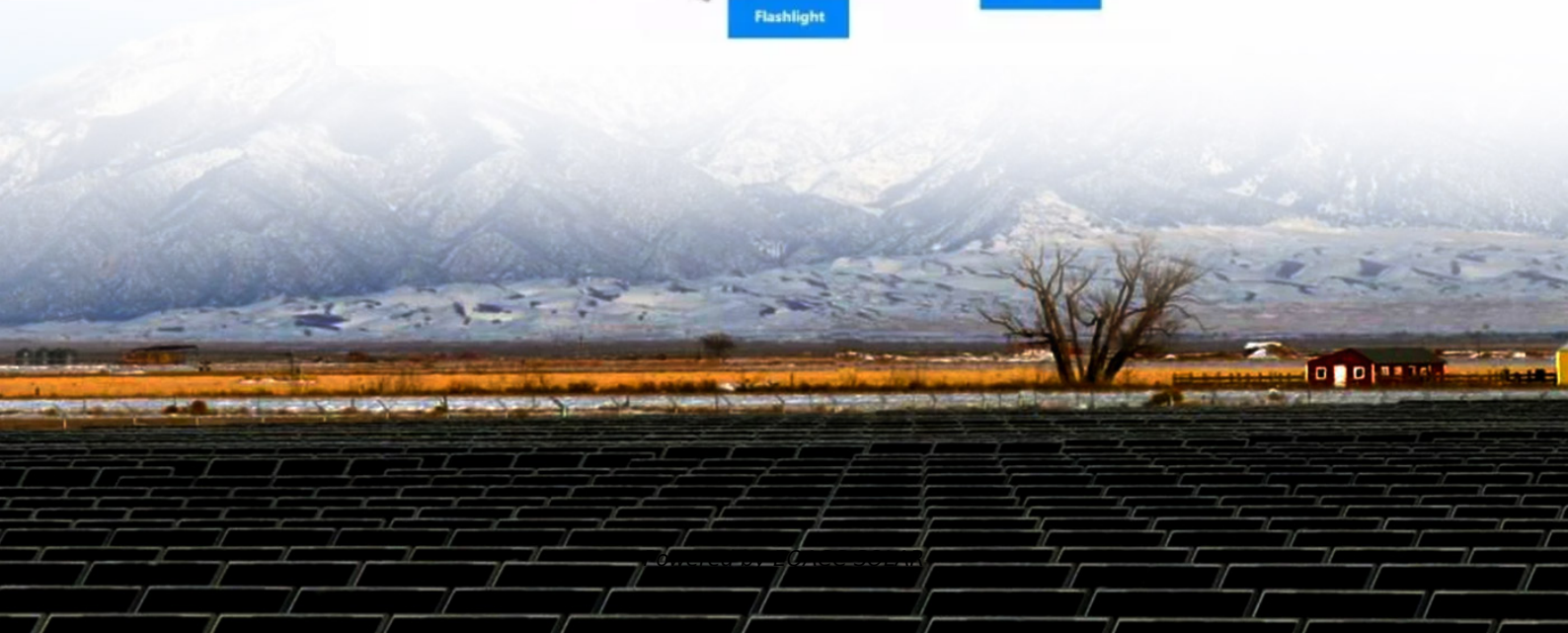


## EQACC SOLAR

# Inverter charging maximum power



## Overview

---

What is the maximum charge current a solar inverter can charge?

**Maximum Solar Charge Current:** This is the maximum current the inverter's MPPT controller delivers to the battery. For example, a hybrid inverter may support an 80A charge current, charging a battery at up to 80A based on its voltage.

What is the maximum charge current from grid inverter to battery?

What is the Maximum charge current from grid inverter to battery with a MultiPlus II 5Kva. We have 10Kw of lithium, 6.6Kwp solar connected to a Fronius 5Kw grid inverter on AC out of a MultiPlus IIGX for offgrid use. We often see the Fronius being ramped down and don't know why. The maximum charge current is about 50A, which is about 3200W.

What is the charge and discharge limit of my inverter?

Please refer to the manual for the charge and discharge limit of your inverter. When selecting the charge and discharge current limits you will always be limited to the lowest current value whether that is the inverter or the batteries. For example, the 3.6kW Ecco inverter has a 90A maximum charge/discharge current.

How much power does a battery inverter use?

Medium and large inverters generally draw between 1000 to 5000 watts from a battery. This range reflects their power consumption when converting DC (direct current) electricity from a battery to usable AC (alternating current) electricity for devices. For medium inverters, typical power draws range from 1000 to 3000 watts.

## Inverter charging maximum power

---



### Powerwall 3 DC System Sizing

Powerwall 3 can be configured as up to a 11.5 kW / 48 A AC rated inverter that can support up to a maximum DC system size of 20 ...

---

### Selecting Battery Charge/Discharge Rates

Please refer to the manual for the charge and discharge limit of your inverter. When selecting the charge and discharge current limits you will always be ...



---

### How to Set the Charging Current of Hybrid Inverter?

This article introduces how to set the charging current of the hybrid inverter? The difference between AC charging, PV charging and hybrid charging, and sets the charging ...

---

### Inverter Power Draw: How Much Power Does An Inverter Use From A

## Battery

Understanding inverter specifications helps optimize power consumption and battery voltage for better performance. The actual power draw of an inverter also depends on ...



### Maximum achievable charging power with an inverter

Maximum achievable charging power with an inverter by pablo\_mtl » Fri 2:07 am Hi. I'm having some questions about using the inverter for charging. After ...

### The maximum charging power that the inverter can achieve?

If a brave guy has good inverter hardware (considering the power range of the most modern electric cars, peak power is 80kW to 160kW), with a working V2 or V3 control board, and a ...



### How Big of an Inverter Can My Car Battery ...

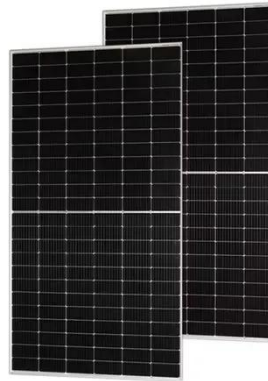
To determine the maximum inverter power that your vehicle's battery can support, you need to know the battery's rated voltage (12V for ...



---

## How Big of an Inverter Can My Car Battery Handle?

To determine the maximum inverter power that your vehicle's battery can support, you need to know the battery's rated voltage (12V for most automotive batteries) and the ...



---

## Selecting Battery Charge/Discharge Rates

Please refer to the manual for the charge and discharge limit of your inverter. When selecting the charge and discharge current limits you will always be limited to the lowest current value ...

---

## Powerwall 3 DC System Sizing

Powerwall 3 can be configured as up to a 11.5 kW / 48 A AC rated inverter that can support up to a maximum DC system size of 20 kW. 20 kW DC is the absolute maximum solar ...



### 30-35kW Solis Three Phase High-voltage Energy Storage Inverter

The Solis S6-EH3P (30-35)K-H-LV (21A) series, three-phase energy storage inverter is tailored for commercial PV energy storage systems, applicable to 3? 220V/230V grid. The inverter ...



### Hybrid Inverters: Input vs. Charge Current Guide

Introduction "Why does my hybrid inverter list two different current ratings?" This question puzzles many DIY solar enthusiasts building off-grid or hybrid systems. Hybrid inverters are the ...



### What is the Maximum charge current from grid inverter to battery ...

What is the Maximum charge current from grid inverter to battery with a

## GRADE A BATTERY

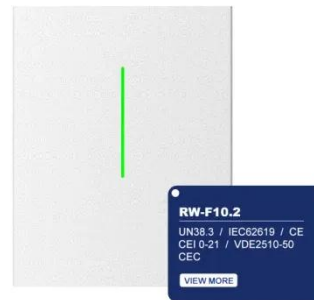
LiFePO4 battery will not burn when overcharged, over discharged, overcurrent or short circuited and can withstand high temperatures without decomposition.



MultiPlus II 5Kva. We have 10Kw of lithium, 6.6Kwp solar connected to a Fronius 5Kw grid inverter on AC ...

## Hybrid Inverters: Input vs. Charge Current Guide

Introduction "Why does my hybrid inverter list two different current ratings?" This question puzzles many DIY solar enthusiasts building off-grid or ...



## Contact Us

For catalog requests, pricing, or partnerships, please visit:  
<https://www.eqacc.co.za>