

EQACC SOLAR

Huawei solar AC Combiner Box



Overview

Does acbox work with Huawei sun2000l?

(WEEE) 2.4 Working Principles The ACBox works with Huawei SUN2000L. It combines the outputs from up to 12 SUN2000L-4.125KTL-JP units or 10 SUN2000L-4.95KTL-JP units and provides surge protection and overcurrent protection. Figure 2-8 shows the ACBox working principles by using the access from 12 SUN2000L-4.125KTL-JP units as an example.

Does smartacbox work with Huawei sun2000l?

2 Overview 2.4 Working Principles The SmartACBox works with Huawei SUN2000L. It combines the outputs from up to 12 SUN2000L-4.125KTL-JP units or 10 SUN2000L-4.95KTL-JP units and provides surge protection and overcurrent protection.

How many solar inverters can a smartacbox connect to?

The SmartACBox is used with Huawei solar inverters and supports a maximum of 10 SUN2000-4.95KTL-JPL0 solar inverters (SUN2000 for short) . The SmartACBox has a built-in SmartLogger1000A or SmartLogger3000 (SmartLogger for short) that connects to Huawei solar inverters over RS485.

How many sun2000l & KTL-JP units does a smartacbox have?

It combines the outputs from up to 12 SUN2000L-4.125KTL-JP units or 10 SUN2000L-4.95KTL-JP units and provides surge protection and overcurrent protection. In addition, the SmartACBox is embedded with a SmartLogger that forms a monitoring system by working with the router purchased and installed by users.

Huawei solar AC Combiner Box



EDOC1100003963

2. Before installing the device, carefully read the ACBox 12-In 1-Out AC Combiner Box User Manual to get familiar with product information and precautions. 3. Only certified electricians ...

[Get Price](#)

SmartACBox 10-In 1-Out Smart AC Combiner Box Quick Guide

o Before turning on the AC switch between the solar inverter and the power grid, check that the AC voltage is within the specified range using a multimeter set to the AC ...



[Get Price](#)

HUAWEI SMARTACBOX-12/1-JP USER MANUAL Pdf Download



View and Download Huawei SmartACBox-12/1-JP user manual online. 12-In 1-Out Smart AC Combiner Box. SmartACBox-12/1-JP solar panel pdf manual download.

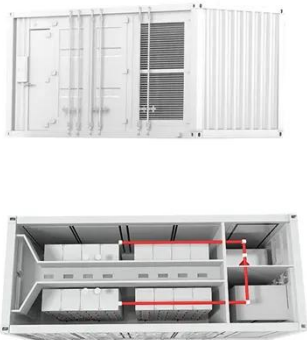
[Get Price](#)

HUAWEI ACBOX SERIES USER

MANUAL Pdf Download

View and Download Huawei ACBox Series user manual online. 12-In 1-Out AC Combiner Box. ACBox Series industrial electrical pdf manual download. Also for: Acbox-12/1-jp.

[Get Price](#)



SmartACBox 12-In 1-Out Smart AC Combiner Box User Manual

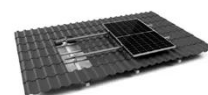
The SmartACBox combines the AC outputs from single-phase string inverters. The SmartACBox works with Huawei SUN2000L and combines the outputs from the following ...

[Get Price](#)

SmartACBox 10-In 1-Out Smart AC Combiner Box User Manual

Description The SmartACBox is used to combine the AC outputs of the single-phase string inverters. The SmartACBox is used with Huawei solar inverters and supports a ...

[Get Price](#)



TILE ROOF SOLAR MOUNTING SYATEM



STANDING SEAM ROOF SYATEM



ADJUSTABLE TILT FLAT ROOF SYATEM



TRIANGLE FLAT ROOF SYATEM

AC Combiner Box

A combiner box is used in solar power systems to combine the output of multiple solar panel strings into a single DC output. It helps organize wiring,

simplifies installation, and ...

[Get Price](#)



ACBox 12-In 1-Out AC Combiner Box User Manual

5.6 Installing the AC Input Power Cable ..
29

[Get Price](#)



Huawei photovoltaic combiner box hw3

How do combiner boxes work? The working principle of combiner boxes is simple - they combine the DC output of multiple solar panels into a manageable circuit. This combined output is then ...

[Get Price](#)

ACBT25HWM1G

Backup changeover box for the Huawei hybrid inverters. Supplied with a motorized 3 position 4 poles changeover (3F+N), up to 25A - 400VAC, designed to

disconnect the facility from grid if ...

[Get Price](#)



Contact Us

For catalog requests, pricing, or partnerships, please visit:
<https://www.eqacc.co.za>