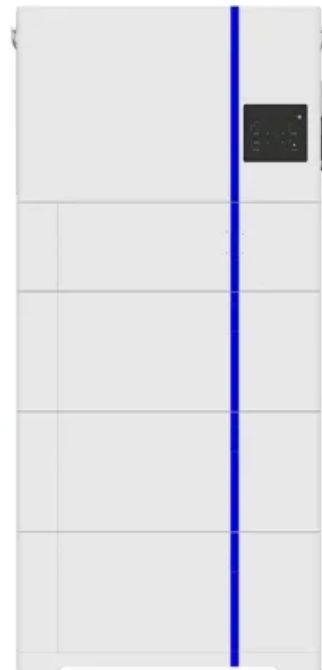
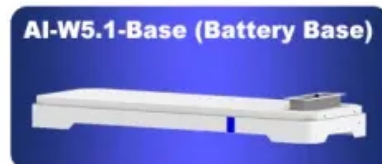
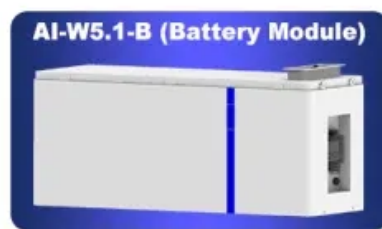


## EQACC SOLAR

# How to distinguish good and bad base station communication equipment

## ESS



## Overview

---

Why is base station performance important?

Base station (BS) performance is vital for delivering expected quality of experience to end users. To ensure this, it is important that the base station conformance criteria is met and that they fulfill the requirements in the region in which they operate. These criteria are specified by the mobile communication standardization body 3GPP.

Why are base stations an inevitability?

These types of objects are an inevitability since they serve the purpose of providing signal transfer for data and voice between mobile mobiles. The idea of base stations is anchored in their function to provide coverage, capacity, and connectivity, hence allowing for extending the working capabilities of mobile phones and other radio gear.

What does a base station do?

A base station connects your phone to the network. It acts as a hub between mobile devices and the core system. Base stations form the backbone of 4G LTE and 5G networks. They provide the coverage you need for calls and data. Base stations enable voice, data, and internet access. They transmit radio signals within a set area.

What is the difference between RRH-based and traditional base stations?

The following table highlights the core differences between RRH-based and traditional base stations: Located at the cell site but not close to the antenna; requires coaxial RF cables to connect the RF unit with antennas. Centralized at the core network side and interfaced using fiber optic cables with radio heads (RE).

## How to distinguish good and bad base station communication equip

---



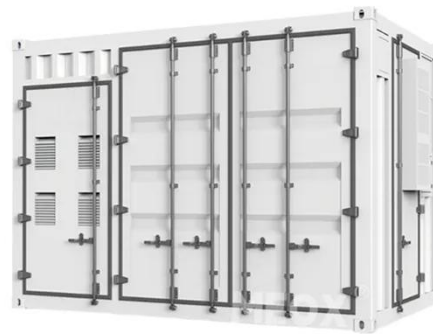
### Base station testing

Traditionally base stations have been verified by measuring their performance conductively at the antenna interface. With 5G, we enter a new and exciting era for base ...

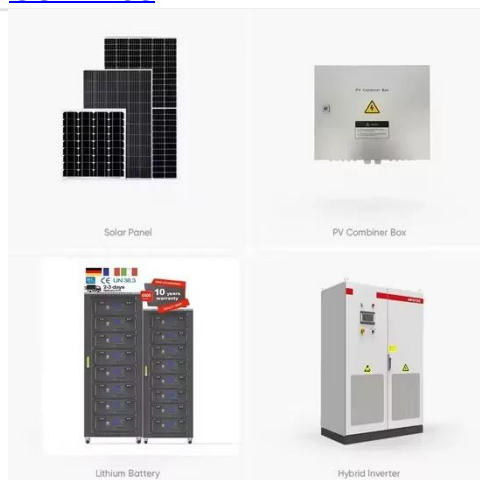
[Get Price](#)

## How Do Base Station Analyzers Improve Wireless Communication

A base station analyzer is a sophisticated piece of test equipment used to install, commission, maintain, and troubleshoot wireless base stations. These analyzers are essential ...



[Get Price](#)



## What is a Base Station? -- From Communication Core to ...

The base station is an indispensable piece of infrastructure in the mobile communication network, silently supporting every phone call, message, and network ...

[Get Price](#)

## Base Station Testing: A Comprehensive Guide

What is Base Station Testing? In wireless communication networks, base stations or cell towers are evaluated and assessed for their functionality, performance, and ...

[Get Price](#)



## Communication Base Station Inspection , HuiJue Group E-Site

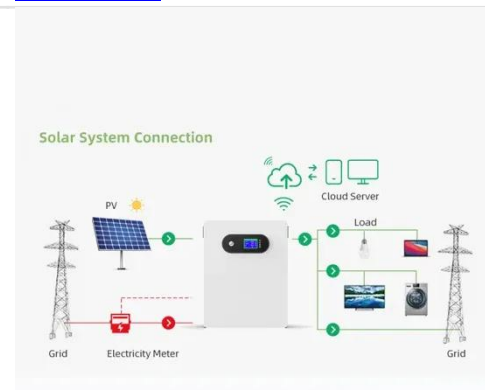
The answer often lies in overlooked communication base station inspections. With 5G deployments accelerating globally, 78% of telecom operators report unexpected downtime due ...

[Get Price](#)

## Base Station Installation & Maintenance Test Solutions

Installation and the upgrading of base stations are underway to expand to 5G coverage. To ensure stable communication between a base station and connect with the stability of mobile ...

[Get Price](#)



## Base Stations

The present-day tele-space is incomplete without the base stations as these

☒ IP65/IP55 OUTDOOR CABINET☒ OUTDOOR TELECOM CABINET☒ OUTDOOR ENERGY STORAGE CABINET☒ 19 INCH

constitute an important part of the modern-day scheme of wireless communications. They are ...

[Get Price](#)

## 3GPP base station conformance testing

Base station (BS) performance is vital for delivering expected quality of experience to end users. To ensure this, it is important that the base station conformance criteria is met and that they ...



[Get Price](#)

## Contact Us

For catalog requests, pricing, or partnerships, please visit:  
<https://www.eqacc.co.za>