

EQACC SOLAR

How many watts of solar power should be matched with an inverter



Overview

How many solar panels can a solar inverter use?

Since you cannot have a fraction of a panel, you can use up to 16 panels. Additionally, consider the temperature coefficient of the panels and the inverter's efficiency rating for a more accurate setup. Q: What happens if I connect too many solar panels to my inverter?

.

How much wattage should a solar inverter have?

If your inverter has a capacity of 3000 watts, the combined wattage of all the panels should not be more than 3000 watts. To find out the total wattage, just add up the wattage ratings of all the solar panels you have.

How to choose a solar inverter?

You can expect that the inverter should match or slightly exceed the combined wattage produced by the solar panels. Therefore, if you have an array of 20 solar panels, each with a capacity of 300 watts, the total output will be 6000 watts, which is an important benchmark for choosing your inverter.

Can you connect solar panels to an inverter?

When it comes to connecting solar panels to an inverter, there's a bit more to consider than simply adding panels until you run out of roof space. Stack on too many, and you risk overloading your inverter; too few, and you're not getting the most out of your setup.

How many watts of solar power should be matched with an inverter

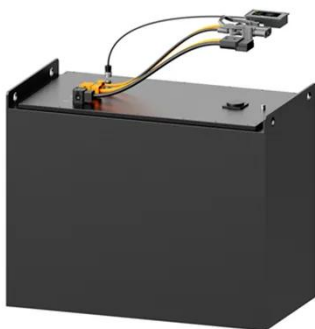


How many solar panels can I use with a ...

There are two things to consider: Solar Array Wattage Solar Array Voltage To determine the Solar Array Wattage, simply multiple ...

How to Choose the Right Size Solar Inverter: Step-by-Step ...

Wondering what size solar inverter do I need for your solar system? This guide walks you through calculating inverter size based on panel capacity, power usage, and safety ...



How Many Solar Panels Can One Inverter ...

How many solar panels for a 2000-watt inverter? For a 2000-watt inverter, the number of solar panels depends on panel wattage, but a ...

How Many Solar Panels Can One Inverter Handle?

How many solar panels for a 2000-watt inverter? For a 2000-watt inverter, the number of solar panels depends on panel wattage, but a general guideline is around 6 to 8 ...

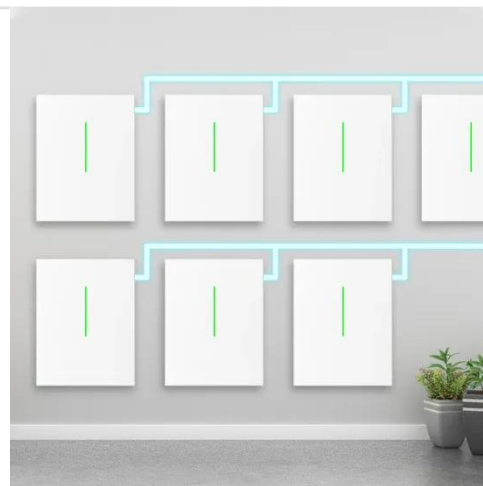


How many solar panels can I use with a particular inverter?

There are two things to consider: Solar Array Wattage Solar Array Voltage To determine the Solar Array Wattage, simply multiple each solar panel's watts by the number of ...

How to Calculate Solar Panel, Inverter, Battery Parameters

In this post I have explained through calculations how to select and interface the solar panel, inverter and charger controller combinations correctly, for acquiring the most ...



How Many Solar Panels Can I Connect to an ...

Connecting the right number of solar panels to your inverter is about more than just filling space on your roof--it's essential for making ...



How many solar panels can an inverter ...

Inverter Capacity: The number of solar panels an inverter can handle is primarily determined by its power rating, usually measured in ...



How to Correctly Calculate Solar Panel, ...

The following page demonstrates, using calculations, how to properly pick and connect the solar panel, inverter, and charger controller ...

How to Choose the Right Size Solar Inverter: ...

Wondering what size solar inverter do I need for your solar system? This guide walks you through calculating inverter size based on ...



How Many Solar Panels Can I Connect to an Inverter? A ...

Learn how to optimize your solar power system by understanding how many solar panels can be connected to an inverter. Explore inverter specifications, wiring configurations, ...

Perfect Pairing: How to Match Solar Panels with the Right Inverter ...

When designing a solar energy system, many homeowners and businesses focus primarily on selecting the best solar panels. While panel quality and efficiency are critical, ...



How to Correctly Calculate Solar Panel, Inverter, Battery ...

The following page demonstrates, using calculations, how to properly pick and connect the solar panel, inverter, and charger controller combinations to

achieve the best ...



How to Calculate Solar Panel, Inverter, Battery Parameters

Calculating Solar Panel, Inverter and Battery Charger Specifications
 Estimating Load Wattage
 Determining Approximate Solar Panel Dimension
 Calculating Battery Ah
 Evaluating Charger Controller Specifications
 Assessing Inverter Specifications

1) First you will need to estimate how much watts of electricity you may require for the specified load. Let's say you have a 100 watt load that needs to be operated for approximately 10 hours, in that case the total power required could be estimated simply by multiplying the load with hours, as given under $100 \text{ Watts} \times 10 \text{ hours} = 1,000 \text{ Watt hours}$. See more on [homemade-circuits](#) [cloverenergysystems](#)



How Many Solar Panels Can I Connect to an ...

Learn how to optimize your solar power system by understanding how many solar panels can be connected to an inverter. ...

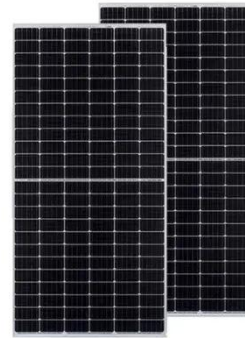


How many solar panels can an inverter handle

Inverter Capacity: The number of solar panels an inverter can handle is primarily determined by its power rating, usually measured in watts (W). **Panel Wattage:** Consider the ...

How Many Solar Panels Can I Connect to an Inverter?

Connecting the right number of solar panels to your inverter is about more than just filling space on your roof--it's essential for making your system work efficiently, safely, and ...



Inverter vs Solar Panel Wattage Compatibility

Understanding Inverter and Solar Panel Wattage Compatibility When designing a solar power system, one of the most critical sizing checks is the relationship between the solar ...

Contact Us

For catalog requests, pricing, or partnerships, please visit:
<https://www.eqacc.co.za>