

**EQACC SOLAR**

# **How many square meters does a 1 kilowatt solar panel have**



## Overview

---

How many square meters is a kilowatt solar panel system?

The area required for each kilowatt (kW) solar panel system is approximately 5 to 10 square meters, depending on the panel efficiency and wattage. 1. The effici.

How much space does a kilowatt solar panel system need?

The area required for each kilowatt (kW) solar panel system is approximately 5 to 10 square meters, depending on the panel efficiency and wattage. 1. The efficiency of the solar panels influences the space needed significantly, with higher efficiency panels requiring less area per unit of power generated. 2.

How many solar panels do I Need?

Most residential solar panels range from 250W to 400W. For calculations, if one assumes an average solar panel size of 1.6 square meters for a 300W panel, the calculations will reveal that around 3.3 panels would be necessary to generate 1 kW of energy. This translates into approximately 5.28 square meters needed for these installations.

How to calculate solar panel area per kW?

Steps to Calculate: Electricity usage = 300 kilowatt-hour Sun hours = 5 hours  
Percentage of offset = 80% Press Calculate Solar array size Estimate = 0.18 kilowatt After this, let's learn about solar panel area per kW.

## How many square meters does a 1 kilowatt solar panel have

---



### How many square meters of solar panels ...

Discover how many square meters of solar panels are needed to cover the energy needs of a four-person family in Europe. Learn more.

[Get Price](#)

### How many square meters of space is required ...

The area required for each kilowatt (kW) solar panel system is approximately 5 to 10 square meters, depending on the panel efficiency ...

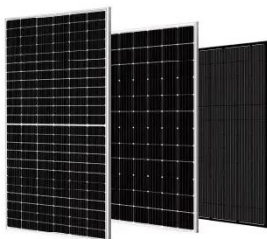
[Get Price](#)



### Solar Panel Output Per Square Meter

Discover how much electricity solar panels generate per square meter, explore efficiency factors, technology comparisons, and future innovations in photovoltaic energy.

[Get Price](#)



### How many square meters of

## solar panels are needed for 1kw?

For instance, if solar panels are utilized in a region experiencing an average solar insolation of about 5 kWh/m<sup>2</sup>/day, then approximately 8 to 10 square meters of solar panels ...

[Get Price](#)



## Solar Panel Area per kW Calculator

Where: A -- Area per kW (square meters per kilowatt) E -- Panel efficiency (percentage converted to decimal)  
Explanation: The formula calculates how much area is needed to ...

[Get Price](#)

## Solar Power per Square Meter Calculator

Solar Panel Output CalculatorSolar Panels Kwh CalculatorSolar Panel Area Per KwWattage is the output of solar panelsthat is calculated by multiplying the volts by amps. Here, the amount of the force of the electricity is represented by volts. The aggregate amount of energy used is expressed in amps (amperes). Output ratings on most solar panels range between 250 watts to 400 watts.See more on energytheory cgprotection

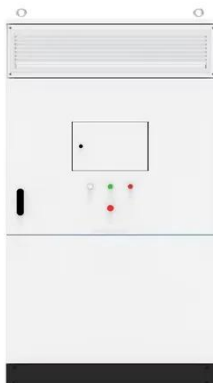


## How Many Kilowatts Can 1

## Square Meter of Solar Panels ...

How Many Kilowatts Can 1 Square Meter of Solar Panels Generate? Ever wondered how much power you can squeeze from that sunny patch on your roof? Let's cut through the technical ...

[Get Price](#)



### How many square meters of space is required per kw solar panel?

The area required for each kilowatt (kW) solar panel system is approximately 5 to 10 square meters, depending on the panel efficiency and wattage. 1. The effici...

[Get Price](#)

### How many square meters of solar panels are ...

For instance, if solar panels are utilized in a region experiencing an average solar insolation of about 5 kWh/m<sup>2</sup>/day, then ...

[Get Price](#)



### How Many Kilowatts Can 1 Square Meter of Solar Panels ...

How Many Kilowatts Can 1 Square Meter of Solar Panels Generate? Ever



wondered how much power you can squeeze from that sunny patch on your roof? Let's cut through the technical ...

[Get Price](#)

---

## How much area is required for 1kw solar panel?

The size of a solar panel is measured in watts, and a 1kw solar panel is equivalent to 1000 watts. The physical size of a solar panel can vary depending on the manufacturer and ...



[Get Price](#)



---

## Solar Power per Square Meter Calculator

Well, today you learned about the solar power per square meter calculator and the factors that you need to note down while doing the calculations. Solar panels kWh calculator ...

[Get Price](#)

---

## Solar Panel Output Per Square Meter

Discover how much electricity solar panels generate per square meter, explore efficiency factors, technology

comparisons, and ...

[Get Price](#)



## What is the Area of a 1 kW Solar Panel?

Solar panel area refers to the physical size of a solar panel typically measured in square meters (m<sup>2</sup>) or square feet (ft<sup>2</sup>). It indicates the surface area available for collecting ...

[Get Price](#)

## How many square meters of solar panels does a family need?

Discover how many square meters of solar panels are needed to cover the energy needs of a four-person family in Europe. Learn more.

[Get Price](#)



## How many square meters of photovoltaic panels are ...

To calculate the KWp (kilowatt-peak) of a solar panel system, you need to

determine the total solar panel area and the solar panel yield, expressed as a percentage. Here are the ...

[Get Price](#)



---

## Contact Us

For catalog requests, pricing, or partnerships, please visit:  
<https://www.eqacc.co.za>