

EQACC SOLAR

How does the terminal device communicate with the base station



Product Model

HJ-ESS-215A(100KW/215KWh)
HJ-ESS-115A(50KW 115KWh)

Dimensions

1600*1280*2200mm
1600*1200*2000mm

Rated Battery Capacity

215KWH/115KWH

Battery Cooling Method

Air Cooled/Liquid Cooled



Overview

What is a base station in telecommunications?

In telecommunications, a base station is a fixed transceiver that is the main communication point for one or more wireless mobile client devices. A base station serves as a central connection point for a wireless device to communicate.

What are base stations & how do they work?

Base stations are the critical components that enable mobile phones and other devices to connect to cellular networks. Here's how they work in a typical mobile network: Signal Transmission and Reception: Mobile devices communicate with the nearest base station via radio waves.

How does a base station communicate with a client device?

Generally, if client devices wanted to communicate to each other, they would communicate both directly with the base station and do so by routing all traffic through it for transmission to another device. Base stations in cellular telephone networks are more commonly referred to as cell towers.

Why are base stations important in cellular communication?

Base stations are important in the cellular communication as it facilitate seamless communication between mobile devices and the network communication. The demand for efficient data transmission are increased as we are advancing towards new technologies such as 5G and other data intensive applications.

How does the terminal device communicate with the base station



Base Stations

A base station represents an access point for a wireless device to communicate within its coverage area. It usually connects the device to other networks or devices through a ...

How do communication base stations work

Conclusion Communication base stations play a crucial role in modern wireless communications by providing reliable connectivity to mobile ...



What Is a Telecom Base Station and How Does It Work?

A base station (BS)--short for Base Transceiver Station--is a core component of a mobile communication network. It serves as the interface between mobile devices and the operator's ...

How a Mobile Terminal Connects to the Network

The Base Station acts as a bridge, converting the terminal's radio signals into data packets that are routed through the Core Network to their final destination, such as a web ...



Communication Method, Base Station, and Terminal Device

The embodiment of the invention provides a communication method, a base station and a terminal device. The communication method comprises the steps that the base station sends ...



Understanding Base Stations: The Backbone of Wireless ...

With the advent of 5G technology, base stations are evolving to meet the demands of faster data speeds, lower latency, and massive device connectivity. 5G base stations are ...



How do communication base stations work

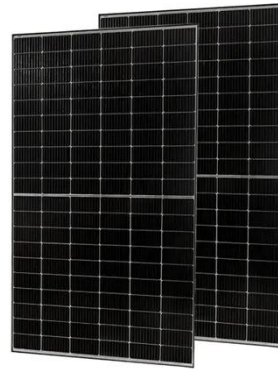
Conclusion Communication base stations play a crucial role in modern wireless communications by providing reliable connectivity to mobile devices within

their coverage areas. Through ...



The Base Station in Wireless Communications: ...

Base station, also known as BTS (Base Transceiver Station), is a key device in wireless communication systems such as GSM. ...



The Base Station in Wireless Communications: The Key to ...

Base station, also known as BTS (Base Transceiver Station), is a key device in wireless communication systems such as GSM. Equipped with an electromagnetic wave ...



What Is the Role of a Base Station in Wireless Communication?

Introduction to Base Stations in Wireless Communication Base stations are critical components in wireless communication networks, serving as the intermediary

between mobile ...



Base Stations

A base station represents an access point for a wireless device to communicate within its coverage area. It usually connects the device to ...

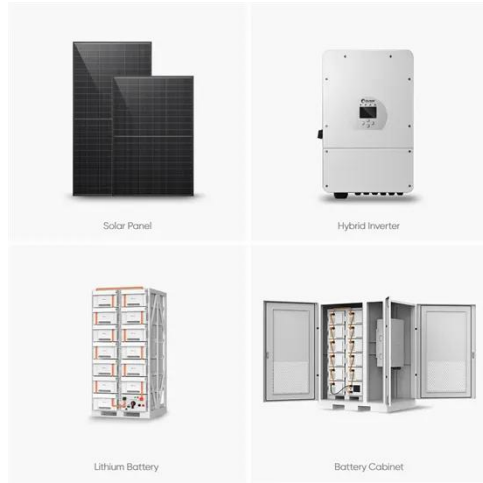
Active base station, Shanghai Zirgy Intelligent Technology ...

The active base station is an important facility in the communication network. It is generally installed in locations such as tall buildings in cities and remote mountainous areas, ...



What is a base station?

Base stations are also central points that all clients connect to in a hub and spoke style network; it would not be a client among similar peers. Generally, if client devices wanted ...



Contact Us

For catalog requests, pricing, or partnerships, please visit:
<https://www.eqacc.co.za>