

EQACC SOLAR

How does the current flow in the battery cabinet



Overview

How does battery current flow?

The conventional understanding of battery current flow is that it flows from the positive terminal, through the circuit, and back to the negative terminal. This is based on the concept of electrons flowing from the negative terminal, through the external circuit, and back to the positive terminal.

Does the current flow backwards inside a battery?

In conclusion, the current does indeed flow backwards inside a battery compared to outside. While this may seem counterintuitive at first, it's a fundamental aspect of how batteries work.

What happens when a battery is connected to a circuit?

When a battery is connected to a circuit, the anode undergoes oxidation (loses electrons), while the cathode undergoes reduction (gains electrons). This process allows electrons to flow from the anode to the cathode, creating an electric current.

What is the direction of current flow in a charging battery?

As shown in the figure, the direction of current flow is opposite to the direction of electron flow. The battery continues to discharge until one of the electrodes is used up [3, p. 226]. Figure 9 3 3: Charge flow in a charging battery. Figure 9 3 3 illustrates the flow of charges when the battery is charging.

How does the current flow in the battery cabinet

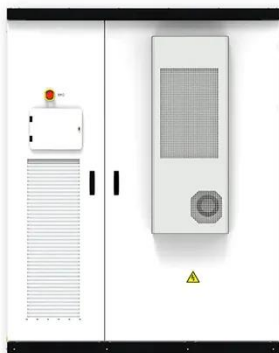
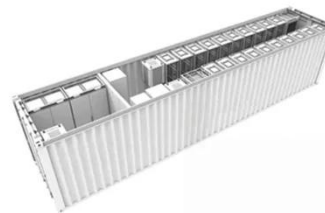


Application of Hall Current Sensor in Battery Monitoring ...

Once the current is abnormal, the remote monitoring system immediately issues an alarm, and the maintenance personnel can respond quickly and solve the problem, ...

electric current

The battery doesn't "supply" electrons to the circuit. The electron current consists of the free (mobile) electron already in the circuit. The battery supplies the electrical potential ...



9.3: Charge Flow in Batteries and Fuel Cells

This page describes the operation of batteries and fuel cells. Batteries have an anode, cathode, and electrolyte, with charge flow involving electrons and ions, and safety components to ...

The Mysterious Case of Battery Current: Does it Really Flow ...

When a battery is being charged, the process is essentially reversed. The current flows from the external power source (such as a wall adapter) into the battery, and then from ...



electric current

The battery doesn't "supply" electrons to the circuit. The electron current consists of the free (mobile) electron already in the ...

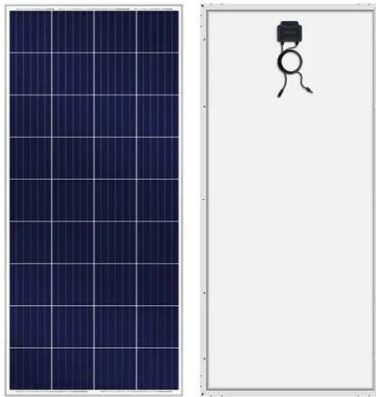
BMS and current sensors in battery management for new ...

During the battery charging and discharging process, it collects the terminal voltage and temperature, charging and discharging current, and total battery pack voltage of each battery ...



Does the Current Flow Backwards Inside a Battery?

Electric Currents in Batteries
The Double Layer Structure in Batteries
Electric Potential During Discharge
Charge



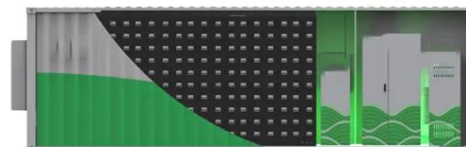
Transfer Reaction, Charge Transfer Current, and Overpotential
Recharging The Battery
Porous Electrodes
Concluding Remarks on Electric Current Flow Inside Batteries
Additional Reading
I remember the physics lessons at school when we studied electrical systems. We learned Ohm's law, which told us that electric current flows from a positive to a negative electric potential while the electrons move in the opposite direction. Kirchhoff's law taught us that there must be continuity in current; i.e., current cannot...
See more on [comsol Engineering LibreTexts](#)

9.3: Charge Flow in Batteries and Fuel Cells

This page describes the operation of batteries and fuel cells. Batteries have an anode, cathode, and electrolyte, with charge flow involving electrons ...

Module 4 Electric Current-The Battery

When a battery is connected to a circuit, the electrons from the anode travel through the circuit toward the cathode in a direct circuit. The voltage of a ...



Module 4 Electric Current-The Battery , Science 111

When a battery is connected to a circuit,



the electrons from the anode travel through the circuit toward the cathode in a direct circuit. The voltage of a battery is synonymous with its ...

UNIT 102-3: BATTERIES, BULBS, AND CURRENT FLOW*

A flow of charge can cause a small light bulb to glow. In this unit, you are going to explore how charge originating in a battery flows in wires and bulbs. You will be asked to ...



Does the Current Flow Backwards Inside a Battery?

We find out if the electric currents in batteries flow backwards by studying the potential profile inside a battery. Read more.

Current flow in batteries?

Forget the batteries for a second, that's just one of a thousand analogies you could use to describe voltage/current and the reason that no current flows has nothing to do with the ...



Battery Current: AC or DC, Current Limitation and How Current ...

How Does Battery Current Flow? When a battery produces current, it pushes electrons in a single, consistent direction--because all chemical batteries output DC current, ...

electrostatics

2 Many popular science sites display and describe that current flows through and inside a battery when connected into an electrical circuit. But what then prevents current ...

12 V 10 AH



Contact Us

For catalog requests, pricing, or partnerships, please visit:
<https://www.eqacc.co.za>