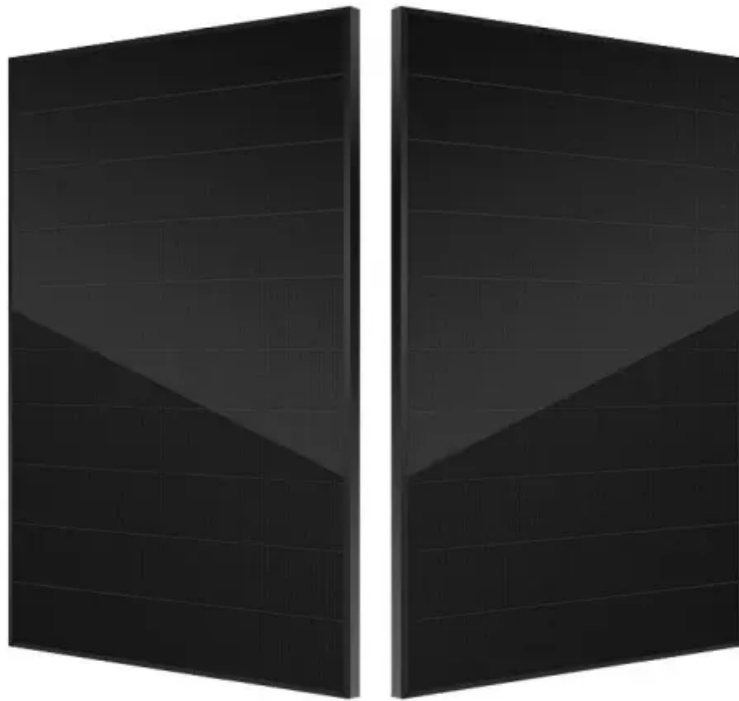


**EQACC SOLAR**

# **How big of an inverter can a 12ah be equipped with**



## Overview

---

What size inverter for a 12V 200Ah battery?

For a 12V 200Ah battery (2.4kWh), a 2000W inverter is ideal. Formula: Inverter Wattage  $\leq$  (Battery Voltage  $\times$  Ah Rating  $\times$  0.8). Factor in surge power needs but prioritize sustained loads. Always check the battery's max discharge rate (C-rate) to avoid exceeding safe limits. When sizing for 24V or 48V systems, recalculate using the higher voltage.

How much battery does a 12 volt inverter need?

As a rule of thumb, the minimum required battery capacity for a 12-volt system is around 20 % of the inverter capacity. For 24-volt inverters, it is 10 %. The battery capacity for a 12-volt Mass Sine 12/1200, for instance, is 240 Ah, while a 24-volt Mass Sine 24/1500 inverter would require at least 150 Ah.

Can a 12 volt car battery support a high power inverter?

Typically, a 12-volt car battery can support an inverter with a power range of about 150 watts to 1500 watts. Please note, however, that car batteries are not suitable for driving high power inverters for extended periods of time, which may cause damage to the battery.

How much inverter power can a car battery support?

There is a theoretical limit to the amount of inverter power that can be supported by an automotive battery. Theoretically, the maximum supported inverter power can be calculated by multiplying the battery capacity (Ah) by the battery voltage (V) multiplied by the discharge multiplier (C-rate).

## How big of an inverter can a 12ah be equipped with

---



### How Big of an Inverter Can My Car Handle: Explained with ...

How Big of an Inverter Can My Car Handle: Understanding Your Car's Electrical System To determine the maximum size of an inverter that your car can handle, you need to ...

[Get Price](#)

### Can an Inverter be Too Big for a Battery? Understanding the ...

If an inverter is too big for a battery, it can cause the battery to drain faster than expected. This is because the inverter will draw more power from the battery than it can handle, leading to a ...



[Get Price](#)

SUPPORT REAL-TIME ONLINE  
MONITORING OF SYSTEM STATUS



### How Big of an Inverter Can My Car Battery ...

Calculating inverter demand sizing There is a theoretical limit to the amount of inverter power that can be supported by an automotive ...

[Get Price](#)

## Calculate Battery Size For Any Size Inverter (Using Our ...

So I have made it easy for you, use the calculator below to calculate the battery size for 200 watt, 300 watt, 500 watt, 1000 watt, 2000 watt, 3000 watt, 5000-watt inverter

[Get Price](#)



## Frequently Asked Questions about Inverters

Frequently Asked Questions about Inverters How much battery capacity do I need with an inverter? As a rule of thumb, the minimum required battery capacity for a 12-volt system is ...

[Get Price](#)

## Calculate Battery Size for Inverter Calculator

The Calculate Battery Size for Inverter Calculator helps you determine the optimal battery capacity needed to support your inverter system. By inputting critical parameters such ...

[Get Price](#)



## Can an Inverter Be Too Big for Your Battery System?

How to Calculate the Right Inverter Size for Your Battery Match the inverter's continuous wattage rating to the



battery's discharge capacity. For a 12V 200Ah battery (2.4kWh), a 2000W inverter ...

[Get Price](#)

## What size inverter can you run off a car battery?

A typical 12-volt car battery can safely support an inverter ranging from about 150 watts up to 600 watts for regular use without harming the battery. While it is technically ...

[Get Price](#)

### Lithium battery parameters

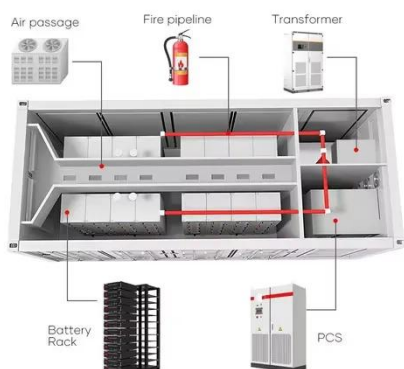
Product capacity: 100Ah

Product size: 135\*197\*35mm

Product weight: 1.82kg

Product voltage: 3.2V

internal resistance: within 0.5



## How Big of an Inverter Can My Car Battery Handle?

Calculating inverter demand sizing There is a theoretical limit to the amount of inverter power that can be supported by an automotive battery. Theoretically, the maximum ...

[Get Price](#)

## Calculate Battery Size for Inverter Calculator

The Calculate Battery Size for Inverter Calculator helps you determine the optimal battery capacity needed to

support your inverter ...

[Get Price](#)

- ✓ LIQUID/AIR COOLING
- ✓ INTELLIGENT INTEGRATION
- ✓ PROTECTION IP54/IP55
- ✓ BATTERY /6000 CYCLES



## How Big of an Inverter Can My Car Handle: Explained with Expert Tips

How Big of an Inverter Can My Car Handle: Understanding Your Car's Electrical System To determine the ...

[Get Price](#)

## How Much Battery Capacity Do You Need With a 12V Inverter?

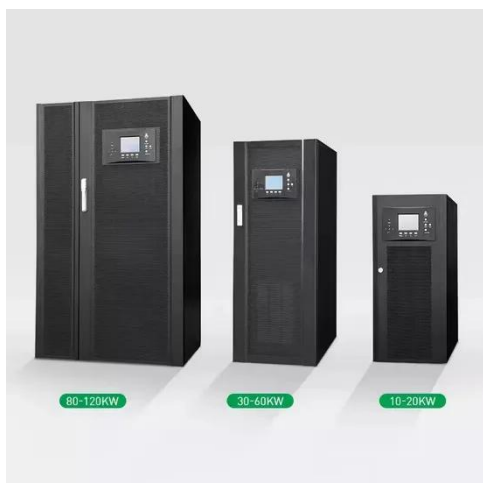
Discover how to calculate the ideal battery capacity for a 12V inverter using simple math, practical examples, and money-saving tips for daily power.

[Get Price](#)



## Can a Battery Be Too Big for an Inverter?

Yes, a battery can be too big for an inverter, leading to inefficiencies and potential safety issues. Oversized

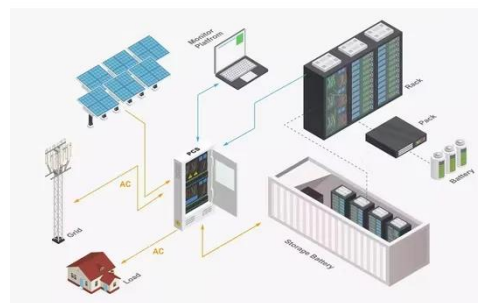


batteries may not discharge correctly or could exceed the inverter's ...

[Get Price](#)

## Calculate Battery Size For Any Size Inverter (Using Our ...

Inverter Battery Size Calculator  
How to Calculate Battery Capacity For Inverter  
How Many Batteries For 3000-Watt Inverter  
Battery Size Chart For Inverter  
Battery to Inverter Wire Size Chart  
To calculate the battery capacity for your inverter use this formula  
Inverter capacity (W)\*Runtime (hrs)/solar system voltage = Battery Size\*1.15  
Multiply the result by 2 for lead-acid type battery, for lithium battery type it would stay the same  
Example Let's suppose you have a 3000-watt inverter with an 85% efficiency rate and your daily runtime  
See more on dotwatts  
redwaybattery



## What size inverter can you run off a car battery?

A typical 12-volt car battery can safely support an inverter ranging from about 150 watts up to 600 watts for regular use without harming the battery. While it is technically ...

[Get Price](#)

## Contact Us

---

For catalog requests, pricing, or partnerships, please visit:  
<https://www.eqacc.co.za>