

EQACC SOLAR

How big are the cells in a 580w solar panel



Overview

The solar panel pv module utilizes 144 high-performance N-TOPCon solar cells, arranged in a 6×12 configuration. How many cells are in a 540 watt solar panel?

To give you an idea, a standard 540 watt solar panel is approximately 88 x 46 inches and tips the scales at around 72 pounds. Most modules with this output rating are monocrystalline and typically have at least 72 cells (144 half-cut cells). Efficiencies vary widely from brand to brand, but most monocrystalline options fall into 18–22% range.

How much power does a solar panel produce?

With an impressive power output of 580W and an efficiency of 21.5%, this panel provides excellent energy generation even in low-light conditions. It features 144 half-cut cells and utilizes Hybrid Passivated Back Contact (HPBC) technology, improving light absorption and reducing energy loss.

What are the dimensions of a 96-cell solar panel?

96-cell solar panel size. The dimensions of 96-cell solar panels are 41.5 inches long and 63 inches wide. That's a 41.5×63 solar panel.

What are the dimensions of standard solar panels?

Most solar panels are about 1.5 inches thick. The typical classification of solar panel sizes is based on the solar cell size, but it's not very useful for most calculations.

How big are the cells in a 580w solar panel



580W photovoltaic panel specifications

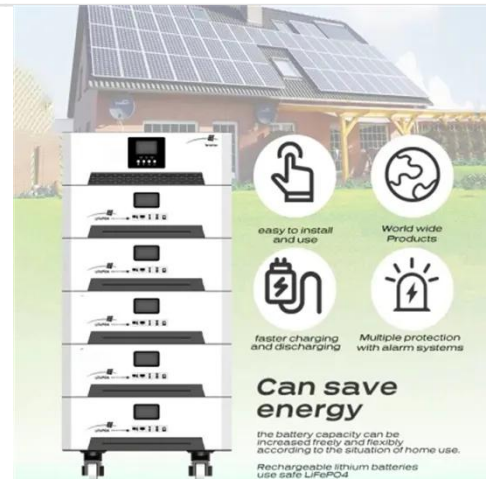
The 570W SUNERGY Mars Solar Panel is a 580W TOPCon Bifacial Half-Cut Solar Panel module with 144 cells from sunergy Solar, one of the leading manufacturers in ...

[Get Price](#)

Standard Solar Panel Sizes And Wattages (100W-500W ...

Standard Solar Panel Sizes And Wattages (100W-500W Dimensions) Whenever you want to find out what the standard solar panel sizes and wattages are, you encounter a big ...

[Get Price](#)



How Efficient Is 580W Solar Panel?

Anern Solar Panels come packed with advanced features that maximize energy conversion and durability. The 580W solar panel is a standout, delivering top-tier performance. ...

[Get Price](#)

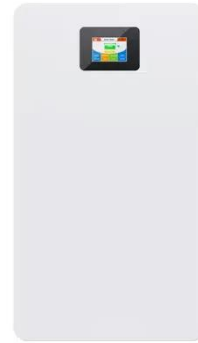


Solar Panel Size and Weight:

How Big Are ...

Can your roof support a solar panel system? Solar panels generate clean energy and significant savings, but they aren't a one-size ...

[Get Price](#)



Jinko Solar 580W Solar Panel

Jinko Solar 580W Solar Panel - High-efficiency solar panel designed for maximum power output. Ideal for homes, farms, and commercial use, this durable panel uses advanced ...

[Get Price](#)

GT580W-144M high efficiency topcon solar panel pv module 580w

The solar panel pv module utilizes 144 high-performance N-TOPCon solar cells, arranged in a 6×12 configuration. These 182mm Multi-Busbar (MBB) cells enhance light absorption and ...

[Get Price](#)



Half Cell Solar Panel 580W

A solar panel is a device that converts sunlight into electricity by using photovoltaic (PV) cells. PV cells are made

of materials that generate electrons when exposed to light.

[Get Price](#)



Solar Panels Sizes and Weights (All Sizes)

Seventy-two-cell solar panels have one additional row of photovoltaic cells compared to 60-cell solar panels. Thus, they generate ...

[Get Price](#)



JA Solar 580 Watt Solar Panel (580-605W) - ...

JA Solar 580W Solar Panel with high efficiency and excellent performance, suitable for residential or commercial use. The panel features a durable ...

[Get Price](#)

Sunway 144cells 182mm 555w 580w Monocrystalline Half Cell Solar Panel

Hot Selling 144cells 555w 560w 565W 570w 575W 580W mono fotovoltaik solar

panel for home Model Number:
SW580M-144 Power Range: 555W-580W
Dimensions: 2256*1132*35mm ...

[Get Price](#)



Jinko 580w Solar Panel

Jinko 580w solar panel (monocrystalline) are among the best in the market, with high efficiency and durability. The Jinko 580w panel is a prime example of this quality, with a dimensions of ...

[Get Price](#)

Sunway 144cells 182mm 555w 580w Monocrystalline Half ...

Hot Selling 144cells 555w 560w 565W
570w 575W 580W mono fotovoltaik solar
panel for home Model Number:
SW580M-144 Power Range: 555W-580W
Dimensions: ...

[Get Price](#)



580 W , LONGI-PANEL-580W-LR5-72HTD-580M-(HI-MO-6) , NCA SOLAR

The LONGi LR5-72HTD-580M is a high-efficiency monocrystalline solar panel,



part of the Hi-MO 6 Explorer series, offering superior performance for large-scale residential and commercial solar ...

[Get Price](#)

580W Half-Cell N-type Mono Solar panels

The 580w solar panel is one with half-cell monocrystalline cells and N-Type technology, the half-cell configuration of the solar modules offers the advantages of higher power output, better ...

[Get Price](#)



Solar Panel Bifacial Half-cut Monocrystalline 580 Wp

SOLAR PANEL 580 WATTS , JA SOLAR , Bifacial Half-cut , Monocrystalline , 144 Cells PV Module , Grade A , Power tolerance 0/+5W , L 2333 mm, W 1134 mm, D 30 mm , 32.50 kg , ...

[Get Price](#)

Contact Us

For catalog requests, pricing, or partnerships, please visit:
<https://www.eqacc.co.za>