

**EQACC SOLAR**

# **How big an inverter should I use for 12v 120 amp hours**



## Overview

---

Generally, it's recommended to size the inverter to 80-100% of the DC system's rated capacity. How big should a solar inverter be?

Generally, it's recommended to size the inverter to 80-100% of the DC system's rated capacity. Before determine the inverter size, the most important thing is to calculate your average daily power consumption (kWh) and calculate your solar panel array size to match your power consumption. You could follow our to make this estimation.

How do I choose the right inverter size?

Here is our last bit of advice on how to select the correct inverter size: Check our inverter size chart. List all your appliances in the function of their power output. Apply our inverter size formula. Do not exceed 85% of your inverter's maximum power continuously. Oversize your inverter for extra appliances in the future.

How much power does a 12V inverter use?

Standard 12v models top out around 3000w (24v/48v ~ 4000w). To proceed: Upgrade to a higher-voltage system (24 V/48 V) for a larger inverter. Consider a higher-voltage system for a bigger inverter. Pick your appliances. Use the dropdown to add common devices—or enter your own custom items.

How does the inverter size calculator work?

Our Inverter Size Calculator simplifies this task by accurately estimating the recommended inverter capacity based on your solar panel power and quantity. By inputting your panel's rated power and number of panels, the calculator produces a recommended inverter power range that aligns with 80-100% of your system's total DC capacity.

## How big an inverter should I use for 12v 120 amp hours

---



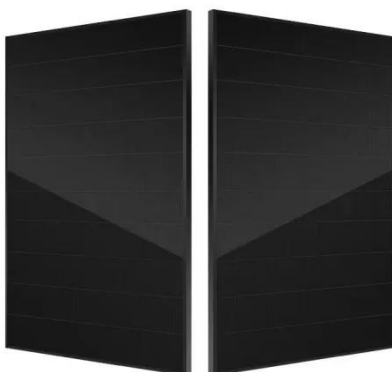
### What Size Inverter You Need (Calculations + Battery)

The size of the inverter required will be determined by the total wattage of the appliances you need to operate and the time they need to run. You also need to add a bit ...

---

### The Only Inverter Size Chart You'll Ever Need

We have created a comprehensive inverter size chart to help you select the correct inverter to power your appliances.



---

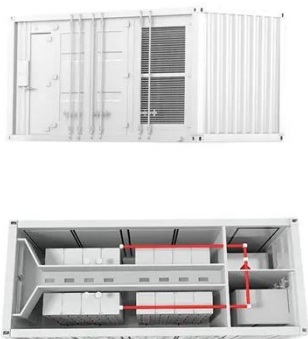
### 12 Volt Battery Run Time Calculator

Do you have a 12v device you need to power but don't know what 12-volt battery you need? For those running a continuous 12-volt load, an adequately sized deep-cycle battery is ...

---

### How to size an inverter that can run your air ...

In this article, I'll explain in detail the main specifications to look at when shopping for an inverter that can run your air conditioner. I ...



## How to Choose the Right Size Solar Inverter: Step-by-Step ...

Wondering what size solar inverter do I need for your solar system? This guide walks you through calculating inverter size based on panel capacity, power usage, and safety ...

## What Size Power Inverter Is Needed for a House [Full Guide]

Don't know what size power inverter is needed for your house? Check out this guide, and figure out how to determine the size of the inverter you need.



## How to Determine What Size Inverter You Can Run Off a ...

Determining the appropriate size of an inverter that can be run off a 100Ah battery involves understanding both the power output of the inverter and the

energy capacity of the battery. A ...



## How Big Of an Inverter Can My Car Handle

The inverter is the device that converts power from battery-powered electronics to the voltage used by your car (120 volts). The greater ...



## Find the Ideal Inverter Size Using our Inverter Run-time ...

How big of an inverter do you need? It depends on what you are trying to power and your battery size. Try our easy-to-use Inverter Run-time Calculator!



## What size inverter can I run off a 100Ah lithium battery?

A 100Ah lithium battery can typically support an inverter up to 1,200W for 1 hour, assuming a 12V system. Actual runtime depends on load wattage and

battery voltage. For example, a 600W ...



### Inverter Capacity Calculator

The inverter capacity calculator helps you find the right inverter size for your home or office. It calculates how much power your devices need, how big the inverter should be, and ...

### Inverter Size Calculator , Find Your Perfect Power Match

Quickly size your campervan inverter. Add appliances, see min & max loads, and compare value vs premium options. Efficient, reliable, & easy.



### Inverter Size Calculator - self2solar

Determining the Inverter Size to Match the Solar Panel Array Determining the correct inverter size depends on your solar array's ...



## What Size Inverter Can I Run Off a 200Ah Battery?

When determining what size inverter can be run off a 200Ah battery, it's essential to consider both the power requirements of your devices and the characteristics of the battery itself. A typical ...



## How to Determine the Right Inverter Size For Your ...

An inverter is a device that turns the power from a 12 volt DC battery, like the one in your car or truck, into the 120 volt AC power that runs all of the electronics in your house. You can use ...

## How Big of an Inverter Can My Car Battery ...

Most cars use 12V batteries, some larger vehicles may use 24V batteries. This (kind of) voltage specification helps define the input ...



### **How to Choose the Right Size Solar Inverter: ...**

Wondering what size solar inverter do I need for your solar system? This guide walks you through calculating inverter size based on ...

### **How Do You Choose the Right Inverter Size for Your Specific ...**

To choose the right inverter size for your specific power needs, first calculate your total power requirements in watts. Multiply the battery capacity (in Ah) by its voltage (typically ...



### **What size fuse between battery and inverter?**

Fuse size and wire ampacity: The amp rating of the fuse you use between your battery bank and inverter should logically not exceed ...





## Inverter Size Calculator - self2solar

Determining the Inverter Size to Match the Solar Panel Array Determining the correct inverter size depends on your solar array's capacity and your household's power ...



## What Inverter Size is Best for a 100Ah Battery?

Understanding the Basics What is an Inverter? An inverter converts DC (Direct Current) power from your battery into AC (Alternating Current) power, which is used by most household ...

## Find the Ideal Inverter Size Using our Inverter ...

How big of an inverter do you need? It depends on what you are trying to power and your battery size. Try our easy-to-use Inverter ...

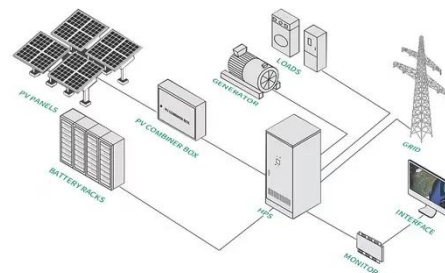


## How To Select The Correct Inverter Fuse Size

Use our simple Inverter Fuse Size Calculator to select the right fuse for your inverter. Ideal for 240VAC inverters in your RV, boat or 4x4.

## Understanding Battery Capacity and Inverter Compatibility

In this guide, we will delve into the practical aspects of converting amp-hours to watt-hours, calculating battery run times, and determining the right inverter size, among other ...



## Contact Us

For catalog requests, pricing, or partnerships, please visit:  
<https://www.eqacc.co.za>