

EQACC SOLAR

Energy storage power station construction distance



Overview

What are battery storage power stations?

Battery storage power stations are usually composed of batteries, power conversion systems (inverters), control systems and monitoring equipment. There are a variety of battery types used, including lithium-ion, lead-acid, flow cell batteries, and others, depending on factors such as energy density, cycle life, and cost.

What are the core functions of energy storage power stations?

In addition to these core functions, functions such as anti-backflow protection, support for parallel/off-grid operation, and islanding protection further enhance the reliability and versatility of energy storage power stations.

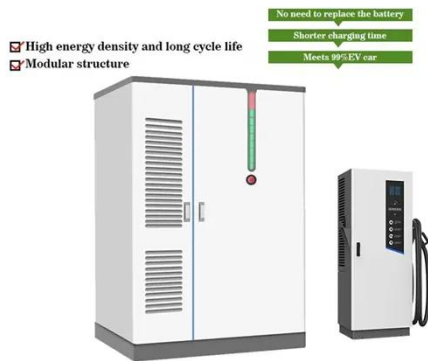
What are operation and maintenance plans for energy storage power plants?

Operation and maintenance plans for energy storage power plants cover all key aspects to ensure optimal performance and reliability. Here is a detailed description of its components: Use real-time monitoring systems to track the operating status, battery performance, and charge and discharge efficiency of the energy storage system.

Why do battery storage power stations need a data collection system?

Battery storage power stations require complete functions to ensure efficient operation and management. First, they need strong data collection capabilities to collect important information such as voltage, current, temperature, SOC, etc.

Energy storage power station construction distance



China's Largest Grid-Forming Energy Storage Station ...

The station was built in two phases; the first phase, a 100 MW/200 MWh energy storage station, was constructed with a grid-following design and was fully operational in June ...

[Get Price](#)

safety distance requirements for energy storage power station ...

Battery storage power station - a comprehensive guide This article provides a comprehensive guide on battery storage power station (also known as energy storage power stations). These ...



[Get Price](#)



Battery storage power station - a comprehensive guide

Battery storage power stations store electrical energy in various types of batteries such as lithium-ion, lead-acid, and flow cell batteries. These facilities require efficient operation ...

[Get Price](#)

Jiangsu issues safety standards for user-side energy storage

Changzhou Local Standard: This standard specifies the minimum safety distances between different types of energy storage power stations and risk areas. For example, the ...

[Get Price](#)



How is an energy storage station built? , NenPower

Energy storage stations are constructed through a multi-faceted process that entails several pivotal stages: 1. **Site selection and assessment, 2. Design and engineering, 3. ...

[Get Price](#)

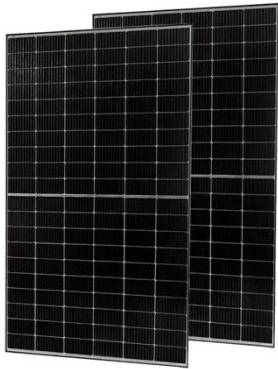
Entire process of developing an energy storage power station ...

Energy storage power stations, acting as "power banks" in the power system, play a crucial role in regulating power supply and demand balance, improving power system flexibility, and ...

[Get Price](#)



Energy Storage Power Station Construction Guide: Key Steps ...



Maybe you're just someone who Googled "how to build a giant battery that doesn't look like your phone's power bank." Whatever brings you here--welcome! This energy storage ...

[Get Price](#)

Battery storage power station - a ...

Battery storage power stations store electrical energy in various types of batteries such as lithium-ion, lead-acid, and flow cell batteries. ...

[Get Price](#)



Energy Storage Power Station Battery Construction Process: ...

As renewable energy adoption accelerates globally, constructing efficient battery systems for energy storage power stations has become critical. This guide explores the technical process, ...

[Get Price](#)

Station Construction Distance Key Factors and Best Practices

...

When developing power stations or charging infrastructure, the station construction distance plays a critical role in ensuring operational efficiency and regulatory compliance. This article ...

[Get Price](#)



Essential Safety Distances for Large-Scale Energy Storage Power Stations

Discover the key safety distance requirements for large-scale energy storage power stations. Learn about safe layouts, fire protection measures, and optimal equipment ...

[Get Price](#)

Contact Us

For catalog requests, pricing, or partnerships, please visit:
<https://www.eqacc.co.za>