

**EQACC SOLAR**

# **Emergency lighting battery cabinet installation**



## Overview

---

Is a central battery system suitable for emergency lighting?

sarily be suitable for Emergency Lighting. This is because an Emergency Lighting system has unique load characteristics. And since Emergency Lighting is a critical life-safety installation, it is vital that a Central Battery System is design.

How do you charge an emergency ballast?

power to the emergency ballast and join the inverter connector. At this point, power should be connected to both the AC ballast and the emergency ballast, and the Charging Indicator Light should illuminate indicating the battery is charging. A short-term discharge test may be conducted after the emergency ballast has been charging for one hour.

What happens if the emergency light battery pack fails?

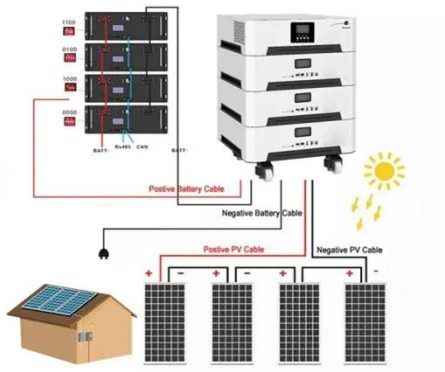
If the product fails within the guaranteed period, Sleep Safe Systems Limited T/A Lumi-Plugin will replace the Emergency light battery pack free of charge but takes no responsibility for the installation costs. Lumi-Plugin reserve the right to change the product specification without notice. This product is guaranteed for a period of 3 years.

What is a Lumi-plugin emergency lighting unit?

The Lumi-Plugin emergency lighting unit is a remote pack designed to comfortably fit through the cutout of the Lumi-Plugin downlight. The emergency lighting module is designed to convert the light source of the Lumi-Plugin downlight for 3 hour emergency use.

## Emergency lighting battery cabinet installation

---



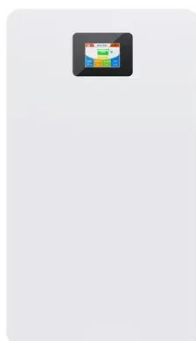
### Emergency cabinet battery assembly method

Other safety cabinets might not have this feature. So, a battery charging cabinet is the best choice if your workplace uses lithium-ion batteries. Key Features of a Battery Charging Cabinet.

...

### Installation Requirements for Emergency Light Batteries

What Are the Key Installation Requirements for Emergency Light Batteries? Emergency light batteries must comply with safety standards like NFPA 101 and NEC, use ...



### LED Emergency Battery Backup

This Emergency Battery Backup must be installed into an UL/CUL Listed Luminaire with a steel enclosure. Do not install this Emergency Battery Backup into luminaires with non ...

### Installation-Instructions-

## EBPLEDL7W

To reduce the risk of electrical shock, disconnect both normal and emergency power supplies and the test button indicator light (which disconnects the battery) before servicing. This product is ...



51.2V 150AH, 7.68KWH



## PANEL 2X2 LED EMERGENCY BATTERY BACK UP ...

After installation is complete, supply AC power to the emergency ballast and join the inverter connector. At this point, power should be connected to both the AC ballast and the ...

## Electrical Installation Method Statement for Central Battery Emergency

This document describes the electrical installation methodology for emergency lighting central battery system in any kind of project. Following this electrical installation method shall ensure ...



## Installation & Wiring Instructions Emergency Light ...

The Lumi-Plugin emergency lighting unit is a remote pack designed to comfortably fit through the cutout of the



Lumi-Plugin downlight. The emergency lighting module is designed ...

## How to Install Emergency Light Batteries

Proper installation of emergency light batteries is crucial to ensure that your emergency lighting system operates effectively during power outages. In this guide, we will ...



## Central Battery Systems Emergency Lighting

ng system has unique load characteristics. And since Emergency Lighting is a critical life-safety installation, it is vital that a Central Battery System is design ARGES Power ...

## LED Emergency Battery Backup

EB40 OPERATING INSTRUCTIONS  
Litetronics Emergency Battery Backup unit (EB40) delivers 90-minutes of power to fixtures in the event of a power

outage. Once installed ...

**12.8V 100Ah**



---

## Contact Us

For catalog requests, pricing, or partnerships, please visit:  
<https://www.eqacc.co.za>