

EQACC SOLAR

**Does the inverter need to
reduce voltage when connected
to the battery**



Overview

Do inverters and batteries need to match?

The inverter and batteries must match in terms of voltage, capacity, and power output. If you are using a 12V battery, then the input voltage of the inverter must match the battery voltage. If the specifications of the battery and the inverter do not match, the system will not operate stably and may even damage the equipment.

Why are Inverter Batteries important?

Inverter batteries are crucial for power backup. They need proper care. Battery management ensures they last longer and perform well. You can avoid frequent replacements. Let's explore more about keeping your inverter battery healthy. Healthy batteries provide consistent power supply. They reduce chances of sudden power loss.

Do inverters need to be connected to batteries?

Connecting inverters to batteries is an important part of an off-grid power solution or backup power system, and the right connections ensure that the system runs efficiently.

What happens if a battery is not connected to an inverter?

With the correct connection, the energy stored in the battery can be smoothly transferred to the inverter and converted into stable AC power for the power supply equipment, maximizing system efficiency. Improper connections, such as a battery voltage that does not match the inverter's input requirements, may result in less efficient power transfer.

Does the inverter need to reduce voltage when connected to the ba



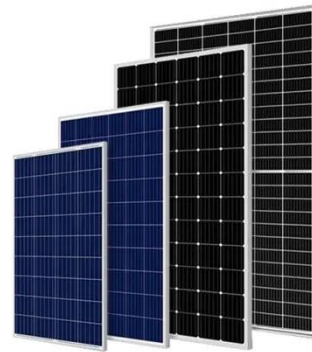
Battery connection for inverter

This article enlightens the features, risks and connectivity of inverter and the battery along with specific safety measures, its hazards ...

[Get Price](#)

Connect your inverter to the battery with ease

As a general rule, the longer the distance between the inverter and the battery, the thicker the wire gauge needs to be to reduce voltage drop. Ampere rating of the inverter: The ampere ...



[Get Price](#)



How to Connect a Large or Small Inverter to a ...

Making the Decision: How to connect the Inverter When does a small inverter's power come from a 12V DC outlet and when does that ...

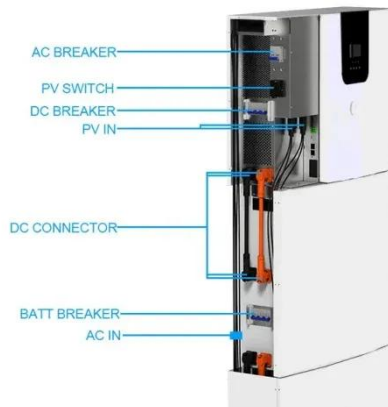
[Get Price](#)

How to Safely Connect a

Battery to an ...

Learn how to safely connect your batteries to your inverter with our guide. Avoid common wiring mistakes to optimize performance ...

[Get Price](#)



How To Avoid Spark On When Connecting Inverter To ...

Connecting an inverter to a battery bank is a crucial step in setting up a solar power or backup power system. However, many DIY enthusiasts encounter a startling issue - ...

[Get Price](#)

Frequently Asked Questions about Inverters

Frequently Asked Questions about Inverters How much battery capacity do I need with an inverter? As a rule of thumb, the minimum required battery capacity for a 12-volt system is ...

[Get Price](#)



How to Connect a Large or Small Inverter to a Battery

Making the Decision: How to connect the Inverter When does a small inverter's power come from a 12V DC outlet and

when does that inverter need to be connected to a ...

[Get Price](#)



2MW / 5MWh
Customizable

How to Battery Protect against Low Discharge with Inverter

@clive87 The battery protect is unidirectional. Meaning is cannot charge and discharge through it. What you can do is set the inverter to switch off on battery voltage and ...

[Get Price](#)



How to Safely Connect a Battery to an Inverter: A Step-by ...

Learn how to safely connect your batteries to your inverter with our guide. Avoid common wiring mistakes to optimize performance and extend system life.

[Get Price](#)

How to Keep Inverter from Draining Battery

Learn how to optimize inverter settings

to prevent battery drain. Adjust voltage settings and use power saving modes for better performance.

[Get Price](#)



Battery connection for inverter

This article enlightens the features, risks and connectivity of inverter and the battery along with specific safety measures, its hazards and troubleshooting strategies.

[Get Price](#)

Can I Attach My Small Inverter Directly to the Battery?

Yes, you can attach a small inverter directly to a battery, but doing it safely requires understanding voltage compatibility, wire sizing, and overload risks. Many DIYers assume it's ...

[Get Price](#)



How To Avoid Spark On When Connecting ...

Connecting an inverter to a battery bank is a crucial step in setting up a solar power or backup power system.

However, many DIY ...

[Get Price](#)



Inverter Battery Connection: Essential Tips For Safe And ...

Learn essential tips for safe and efficient inverter battery connection. Discover step-by-step guides, wiring techniques, and troubleshooting tips to optimize your power backup system's ...



[Get Price](#)



How to Keep Inverter from Draining Battery

Learn how to optimize inverter settings to prevent battery drain. Adjust voltage settings and use power saving modes for better ...

[Get Price](#)

Contact Us

For catalog requests, pricing, or partnerships, please visit:
<https://www.eqacc.co.za>