

EQACC SOLAR

Comparative Test of 20-foot Energy Storage Containers



Overview

Three installation-level lithium-ion battery (LIB) energy storage system (ESS) tests were conducted to the specifications of the UL 9540A standard test method [1]. Each test included a mocked-up initiating ES.

How important is a battery energy storage container?

Container size alone doesn't determine a BESS system's effectiveness — design and layout also matter. A well-structured battery energy storage container optimizes internal airflow, reduces cable loss, and ensures better thermal control.

How do I choose a Bess containerized battery energy storage system?

These containerized battery energy storage systems are widely used in commercial, industrial, and utility-scale applications. But one of the most important factors in choosing the right solution is understanding BESS container size — and how it impacts performance, cost, and scalability.

How do I choose a containerized energy storage system?

The most common standards are: Choosing between these sizes depends on project needs, available space, and future scalability. Regardless of format, each containerized energy storage system includes key components such as battery racks, BMS, EMS, cooling, and fire protection.

What size battery energy storage container do I Need?

From small 20ft units powering factories and EV charging stations, to large 40ft containers stabilizing microgrids or utility loads, the right battery energy storage container size can make a big difference.

Comparative Test of 20-foot Energy Storage Containers



20-foot energy storage container capacity

What is a 20-foot container energy storage system? This product is the first 20-foot 5.0MWh container energy storage system in the industry that has passed UL/IEC certification. This ...

Is BESS commoditising? Market converges to ...

We look at the reasons for, and implications of, the increasing convergence to the 20-foot, 5MWh container as the dominant grid-scale ...



III

Hello, Since I wasn't sure what the correct comparative and superlative of the adjective ILL were, I took at a look at a few dictionaries, but

Why 20ft ISO Containers Are Widely Used in Energy Storage ...

Discover the key advantages of using 20ft ISO containers for battery energy storage systems (BESS), including modularity, transportability, safety, and efficiency.



Battery Energy Storage Industry: Modularization Trend Replaces 20-Foot

The battery energy storage industry is shifting from traditional 20-foot containers to modular systems due to limitations in energy density, design flexibility, and transport. ...

Why 20ft ISO Containers Are Widely Used in ...

Discover the key advantages of using 20ft ISO containers for battery energy storage systems (BESS), including modularity, transportability, safety, and efficiency.



comparative of sad

Hello! I heard this sentence in a children's cartoon: "Now I'm even more sad than before". I was astonished. Isn't the comparative of sad = sadder (as for

all one-syllable ...



Comparative, superlative: clever

good good - adjective better -
comparative the best - superlative
Example Sentences This book is better
than that one. This is the best school in
the city. bad bad - ...



Full-scale walk-in containerized lithium-ion battery energy storage

Three installation-level lithium-ion battery (LIB) energy storage system (ESS) tests were conducted to the specifications of the UL 9540A standard test method [1]. Each test ...

heavier / more heavy

Hi there. As far as I'm aware, words with two syllables can form the comparative either by adding -er suffix or more. And also can form the superlative either by adding -est ...

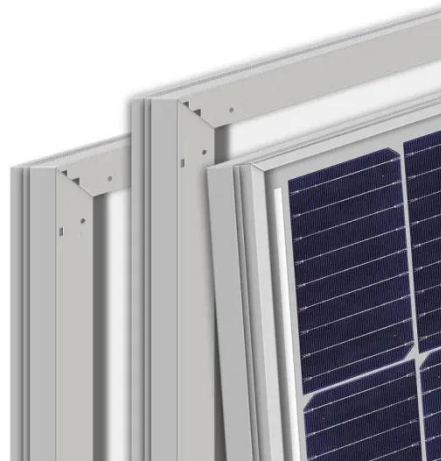


Why 20-foot converted shipping containers are the ...

20-foot converted shipping containers have rapidly emerged as the preferred choice for Battery Energy Storage Systems (BESS) installations due to their unique ...

how to form the comparative of color-adjectives

what are the comparative form of these adjectives: orange, pink, blue, white, red, yellow, purple, blue, green, black, etc. Are there any rules for the comparative form of these ...



Fun (adj, comparative)

Comparative would be "We had a more fun day on Sat than on the Friday." Or, "The most fun day on the trip was the Wednesday when we visited ." As a noun, eg "It was a ...



Comparative, superlative: busy , WordReference Forums

The other day on a local TV station, an air conditioner repair man was quoted as saying "I am more busy than ever due to the heat wave". I realize that most people would ...



slowlier or more slowly?

Could you please tell me which variant is correct or more widely-used in spoken English - slowlier or more slowly. I know that according to the rules of forming the comparative ...

20-foot energy storage container

The energy storage battery system adopts 1500V non-walk-in container design, and the box integrates energy storage battery clusters, ...



Is BESS commoditising? Market converges to 20-foot 5MWh ...

We look at the reasons for, and implications of, the increasing convergence to the 20-foot, 5MWh container as the dominant grid-scale BESS product.

uglier or more ugly?

As a disyllabic adjective ending in -y, ugly should normally become uglier in the comparative. But then, usage and personal preferences also come into play. For instance, ...



Energy Storage Container Specifications: The 2024 Technical ...

You know, the energy storage game's changed dramatically since 2023. The new 20ft 5MWh+ containers now



account for 62% of new utility-scale installations globally [1].

"quicklier" or "more quickly"? , WordReference Forums

Hi kyn, You are correct that the general rule is that if the adjective has two syllables and ends in -Y, you form the comparative by dropping the -Y and adding -ier; you ...

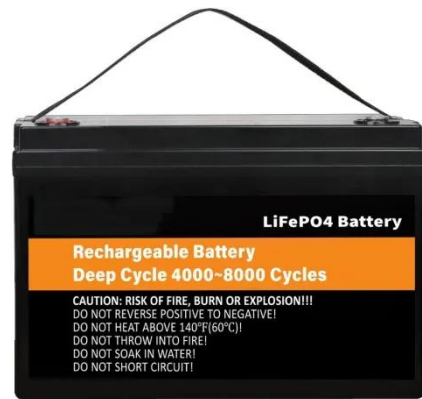


BESS Container Sizes: How to Choose the ...

In this guide, we'll explore standard container sizes, key decision factors, performance considerations, and how to select the best ...

20-foot energy storage container

The energy storage battery system adopts 1500V non-walk-in container design, and the box integrates energy storage battery clusters, DC convergence cabinets, AC power ...



BESS Container Sizes: How to Choose the Right Capacity

In this guide, we'll explore standard container sizes, key decision factors, performance considerations, and how to select the best size for your application. Why BESS ...

How much energy can a container store

How much energy can be stored in a 20-foot liquid cooling container? Typical design of 3727kWh to 5016kWh. Higher BESS capacity will allow for lower auxiliary power ...



Contact Us

For catalog requests, pricing, or partnerships, please visit:
<https://www.eqacc.co.za>