

EQACC SOLAR

Communication signal from base station to user



Overview

What is a base station in telecommunications?

In telecommunications, a base station is a fixed transceiver that serves as the main communication point for one or more wireless mobile client devices. It not only connects wireless devices to each other but also links them to other networks or devices, often through dedicated high-bandwidth wired or fiber optic connections.

Why are base stations important?

Base stations are the backbone of wireless communication networks, playing a pivotal role in signal transmission, network reliability, and high-speed data connectivity. As technology evolves, the importance of base stations will continue to grow, addressing new challenges and supporting the ever-expanding demand for wireless communication services.

Why are base stations important in cellular communication?

Base stations are important in the cellular communication as it facilitate seamless communication between mobile devices and the network communication. The demand for efficient data transmission are increased as we are advancing towards new technologies such as 5G and other data intensive applications.

What is a base station in a cellular network?

It acts as the intermediary between the mobile device and the broader telecommunications network, facilitating both data transfer and voice communication. In cellular networks, a base station typically consists of antennas, a transmitter/receiver system, and a base station controller (BSC).

Communication signal from base station to user



Understanding Base Stations: The Backbone of Wireless Communication

In today's digital age, reliable and high-speed communication is more essential than ever. Whether it's for mobile phones, internet services, or IoT (Internet of Things) devices, ...

Understanding Base Stations in Mobile Communication

The base station must track user location and signal strength continually. When a mobile device approaches the coverage boundary of a base station, the system assesses ...



How do communication base stations work

Communication base stations, or cell towers, are vital for wireless networks. They consist of antennas, transceivers, controllers, and power supplies to ...

What Is the Role of a Base Station in

Wireless Communication?

Base stations are the backbone of wireless communication networks, playing a pivotal role in signal transmission, network reliability, and high-speed data connectivity. As ...



DISTRIBUTED PV GENERATION + ESS



How do communication base stations work

Communication base stations, or cell towers, are vital for wireless networks. They consist of antennas, transceivers, controllers, and power supplies to transmit and receive signals. The ...

Exploring communication base stations

The specific working principles of different types of base stations, such as 2G, 3G, 4G, and 5G base stations, may vary depending on the communication technology standards ...



b: Signal Path from Base station to User ...

Download scientific diagram , b: Signal Path from Base station to User Equipment from publication: A Retrospection of Channel Estimation ...



EMF

A base station is made up of antennas connected by cable to electronic (radio) equipment usually housed in a room or 'shelter'. Some base stations have radio communications dishes (shaped ...



b: Signal Path from Base station to User Equipment

Download scientific diagram , b: Signal Path from Base station to User Equipment from publication: A Retrospection of Channel Estimation Techniques for 5G Wireless ...

Base Stations

The present-day tele-space is incomplete without the base stations as these constitute an important part of the modern-day scheme ...



Understanding the Base Station Subsystem: A ...

In the world of mobile telecommunications, understanding the Base Station Subsystem (BSS) is paramount for grasping how our everyday communications function ...



Exploring communication base stations

The specific working principles of different types of base stations, such as 2G, 3G, 4G, and 5G base stations, may vary depending ...



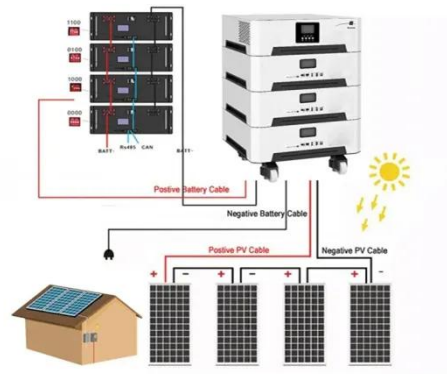
Base Stations

The present-day tele-space is incomplete without the base stations as these constitute an important part of the modern-day scheme of wireless communications. They are ...



What Is A Base Station?

A base station is an integral component of wireless communication networks, serving as a central point that manages the transmission and reception of signals between ...



Contact Us

For catalog requests, pricing, or partnerships, please visit:
<https://www.eqacc.co.za>