

EQACC SOLAR

Communication operator base station data



Overview

What is a base station in a telecommunications network?

A base station is a critical component in a telecommunications network. A fixed transceiver that acts as the central communication hub for one or more wireless mobile client devices. In the context of cellular networks, it facilitates wireless communication between mobile devices and the core network.

What is base station operation?

These operators own many base stations, so Huawei provided the idea of "base station operation", aiming to help them rapidly build fixed networks through fixed-mobile synergy. The idea behind base station operation is to develop FBB around base stations. This construction mode can fully utilize mobile operators' large quantities of base stations.

How many base stations are there in the world?

According to Huawei's Wireless Network Market Insight statistics, global mobile operators have a total of about 6 million physical base stations. Through base station operation, these operators can deploy FTTx across the world more efficiently, meeting users' demands for diverse connections and experience.

What is a mobile communication base station?

Mobile communication base station is a form of radio station, which refers to a radio transceiver station that transmits information between mobile phone terminals through a mobile communication exchange center in a certain radio coverage area.

Communication operator base station data



Types and Applications of Mobile ...

Mobile communication base station is a form of radio station, which refers to a radio transceiver station that transmits information ...

[Get Price](#)

Base Station Operation Increases the Efficiency of Network

Base Station Operation Has a Bright Future According to Huawei's Wireless Network Market Insight statistics, global mobile operators have a total of about 6 million physical base stations. ...



[Get Price](#)



Multi-objective cooperative optimization of communication base station

Based on this, a multi-objective cooperative optimization 5G communication base station operating model and active distribution network considering the system operation ...

[Get Price](#)

Types and Applications of Mobile Communication Base Stations

Mobile communication base station is a form of radio station, which refers to a radio transceiver station that transmits information between mobile phone terminals through a ...

[Get Price](#)



Mobile communication base station traffic forecast

We divide the complete base station traffic data set according to the cell number to reduce the size of a single training data, which is conducive to the training of the subsequent ...

[Get Price](#)

Optimizing redeployment of communication base ...

Abstract Most of the current research is based on the performance of the base station (BS) itself or the operation mode of the communication operator without considering ...

[Get Price](#)



Optimization Control Strategy for Base Stations Based on Communication

On the basis of ensuring smooth user



communication and normal operation of base stations, it realizes orderly regulation of energy storage for large-scale base stations, ...

[Get Price](#)

Global Communication Base Station Body Trends: Region ...

The global Communication Base Station Body market is experiencing robust growth, driven by the escalating demand for high-speed data and improved network coverage fueled ...



[Get Price](#)



Optimizing redeployment of communication base station

Most of the current research is based on the performance of the base station (BS) itself or the operation mode of the communication operator without considering the users' ...

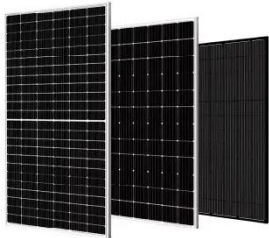
[Get Price](#)

Communication Base Station Innovation Trends , Huijue ...

Rethinking Infrastructure for the 5G-Advanced Era As global mobile data traffic surges 35% annually,

communication base stations face unprecedented demands. Can traditional tower ...

[Get Price](#)



What is a Base Station in Telecommunications?

What is a Base Station? A base station is a critical component in a telecommunications network. A fixed transceiver that acts as the central communication hub for one or more wireless mobile ...

[Get Price](#)

Contact Us

For catalog requests, pricing, or partnerships, please visit:
<https://www.eqacc.co.za>