

**EQACC SOLAR**

# **Communication green base station built outdoors**



## Overview

---

Are green cellular base stations sustainable?

This study presents an overview of sustainable and green cellular base stations (BSs), which account for most of the energy consumed in cellular networks. We review the architecture of the BS and the power consumption model, and then summarize the trends in green cellular network research over the past decade.

Can low-carbon communication base stations improve local energy use?

Therefore, low-carbon upgrades to communication base stations can effectively improve the economics of local energy use while reducing local environmental pollution and gaining public health benefits. For this research, we recommend further in-depth exploration in three areas for the future.

What is a low-carbon base station?

(A) The low-carbon base station consists of a power converter, power grid, photovoltaic, energy storage battery, and base station. The low-carbon base station system maintains communication with the control cloud platform and the micro base station.

How much energy does a communication base station use a day?

A small-scale communication base station communication antenna with an average power of 2 kW can consume up to 48 kWh per day. 4,5,6 Therefore, the low-carbon upgrade of communication base stations and systems is at the core of the telecommunications industry's energy use issues.

## Communication green base station built outdoors

---



### **Teltronic Introduces New Green Communications Base Station**

Spain's Teltronic has introduced its new GBS (Green Base Station) during the Critical Communications World event. This next-generation TETRA base station integrates ...

### **Communication Base Station Green Energy , Huijue Group E ...**

As global telecom networks expand exponentially, how can communication base station green energy solutions address the sector's mounting carbon footprint? With over 7 million cellular ...



### **Wind-solar hybrid for outdoor communication base ...**

Outdoor Communication Energy Cabinet With Wind Turbine Highjoule base station systems support grid- connected, off-grid, and hybrid configurations, including integration with ...



### **Energy performance of off-grid green cellular base stations**

The most energy-hungry parts of mobile networks are the base station sites, which consume around 60 80 % of their total energy. One of the approaches for relieving this energy ...

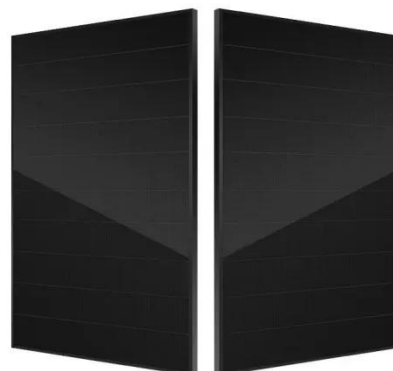


### **Teltronic Introduces New Green ...**

Spain's Teltronic has introduced its new GBS (Green Base Station) during the Critical Communications World event. This next ...

### **Large-scale Outdoor Communication Base Station , Reliable ...**

Discover the Large-scale Outdoor Communication Base Station, designed for smart cities, communication networks, and power systems. Integrated with solar, wind, and energy storage ...



### **Green and Sustainable Cellular Base Stations: An Overview ...**

Energy efficiency and renewable energy are the main pillars of sustainability and environmental compatibility. This study

presents an overview of sustainable and green cellular ...



## Advanced Mobile Outdoor Base Stations for ...

This station integrates advanced Hybrid energy system technology, excels in outdoor base station performance, and leverages ...



## Advanced Mobile Outdoor Base Stations for Smart Communication

This station integrates advanced Hybrid energy system technology, excels in outdoor base station performance, and leverages an Intelligent energy management system ...

## Communication Base Station

The design and implementation of Tian-Power's communication backup solution aims to ensure the normal operation of the communication system in the event of a power outage or power ...



### **China Mobile - Renewable energy and green base station ...**

China Mobile added 467,000 5G base stations while achieving a 2% reduction in overall base station energy consumption in 2024.

### **Green and Sustainable Cellular Base Stations: ...**

Energy efficiency and renewable energy are the main pillars of sustainability and environmental compatibility. This study presents an ...



### **Low-carbon upgrading to China's communications base stations ...**

It is important for China's communications industry to reduce its reliance on grid-powered systems to lower base station energy costs and

meet nationa...



---

## Contact Us

For catalog requests, pricing, or partnerships, please visit:  
<https://www.eqacc.co.za>