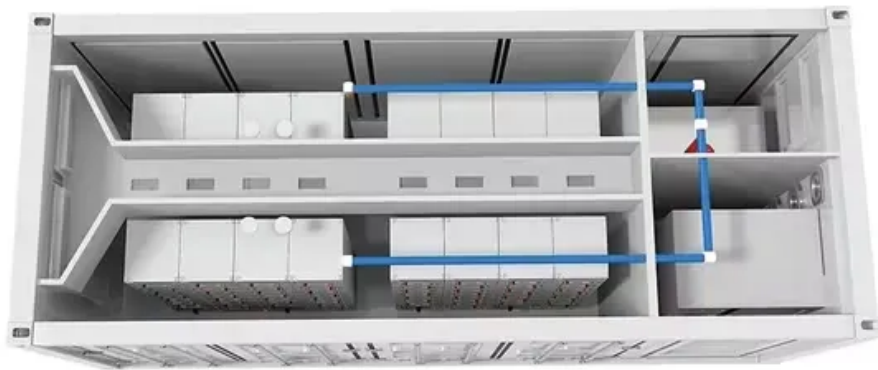


EQACC SOLAR

Canberra Solar Panel solar Angle



Overview

What angle should solar panels be tilted in Australia?

So far based on Solar PV Analysis of 503 locations in Australia, we've discovered that the ideal angle to tilt solar PV panels in Australia varies between 37° from the horizontal plane facing North in Southport, Tasmania and 10° from the horizontal plane facing North in Thursday Island.

How to calculate solar power in Australia?

However, to accurately calculate solar power, the rooftop orientation and angle of the roof need to be combined to measure the solar output potential of the panels, at the property location. The ideal angle for solar panels in Australia is usually equal to the latitude angle of the location of the property.

How to set up solar panels in Australia?

When setting up solar panels in Australia, aligning them correctly is key for efficiency. The right orientation ensures panels capture the most sunlight. This leads to more power generation and savings. The angle of your solar panels can make a big difference in their performance. To find the best tilt, look at the latitude:.

How to choose the best solar panels in Australia?

Angular Analysis: Ensure minimal shading during peak sun hours. When setting up solar panels in Australia, aligning them correctly is key for efficiency. The right orientation ensures panels capture the most sunlight. This leads to more power generation and savings. The angle of your solar panels can make a big difference in their performance.

Canberra Solar Panel solar Angle

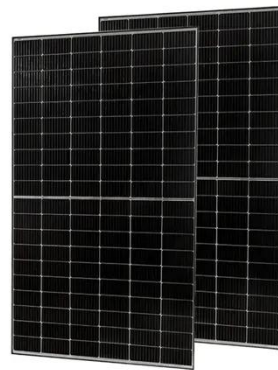


Solar PV potential in Australia by location

Explore the solar photovoltaic (PV) potential across 503 locations in Australia, from Thursday Island to Southport. We have utilized empirical ...

Installing Solar: Does the Orientation of My ...

Discover the best direction for solar panels in Australia. Learn how roof angle and panel positioning for max efficiency impact output. ...



Optimal angle for solar panels in Australia

Find out how you should position solar panels for optimal output in Australia and also power loss if your panels aren't set to the best angle.



Solar Panel Positioning

Azimuth & Angles Making sure your solar panels operate as efficiently as possible helps you get the best out of your solar system. Two things you need to consider are: Tilt of the panel - this ...



Which Solar Panel Angle Is Best?

What If You Have A Flat Roof? Does The Amount of Tilt Angle Really Matter? So What Is The Best Angle For A Solar Panel? The angle of the sun in the sky depends on both the season and your location. In winter the sun is lower in the sky, while in summer it is higher. The closer you live to the equator (i.e. the lower your latitude), the higher the sun is in the sky all year round. Also, the best tilt is affected by local weather patterns. This makes calculating the optimal angle difficult. See more on solar quotes [aussiesolartech](#)

What is the best angle for solar panels in australia?

Discover what is the best angle for solar panels in Australia to maximize energy efficiency. Learn how orientation, tilt, and location impact solar performance across the country.

Which Solar Panel Angle Is Best?

Discover the best angle for your solar panels and what to do if your roof is not at the perfect pitch to maximise solar energy production.



 **TAX FREE**





ENERGY STORAGE SYSTEM

Product Model
HJ-ESS-215A(100KW/215KWh)
HJ-ESS-115A(50KW/115KWh)

Dimensions
1600*1280*2200mm
1600*1200*2000mm

Rated Battery Capacity
215KWH/115KWH

Battery Cooling Method
Air Cooled/Liquid Cooled



Solar Panel Positioning

Azimuth & Angles Making sure your solar panels operate as efficiently as possible helps you get the best out of your solar system. Two things you ...

Solar PV Analysis of Canberra, Australia

Ideally tilt fixed solar panels 31° North in Canberra, Australia To maximize your solar PV system's energy output in Canberra, Australia (Lat/Long -35.2801903, 149.1310038) ...



Solar Panel Orientation and Tilt: Does Angle Really Matter?

Find out how solar panel orientation and tilt affect energy output. Discover the best angles for Australian homes and how to optimise your solar system's

performance.



What is the best angle for solar panels in australia?

Discover what is the best angle for solar panels in Australia to maximize energy efficiency. Learn how orientation, tilt, and location impact solar performance across the country.



✓ IP65/IP55 OUTDOOR CABINET

✓ OUTDOOR MODULE CABINET

✓ OUTDOOR 5G BASE STATION CABINET

✓ WATERPROOF

Installing Solar: Does the Orientation of My Roof Matter?

Discover the best direction for solar panels in Australia. Learn how roof angle and panel positioning for max efficiency impact output. Trust Energy Matters today!

Solar Panel Angles for Canberra, Australian Capital Territory, ...

Earth > Australia > Australian Capital Territory > Canberra Solar Panel Angles for Canberra, Australian Capital Territory, AU Canberra, Australian

Capital Territory is located at a latitude of ...



Solar PV potential in Australia by location

Explore the solar photovoltaic (PV) potential across 503 locations in Australia, from Thursday Island to Southport. We have utilized empirical solar and meteorological data obtained from ...

Contact Us

For catalog requests, pricing, or partnerships, please visit:
<https://www.eqacc.co.za>