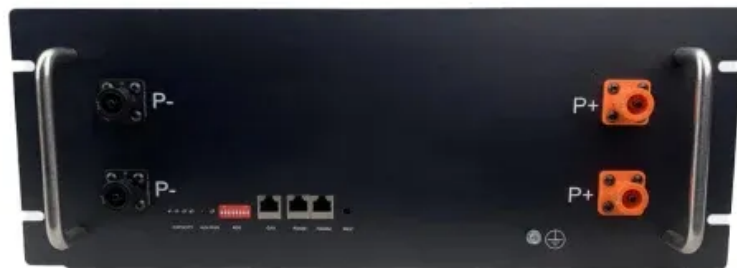


**EQACC SOLAR**

# **Can a 96v inverter be connected to a 12v battery**



## Overview

---

Can a 12V inverter be connected to a 24v battery?

Let's say you have a 12V inverter and try to connect two 12V batteries in series. You would end up inputting 24V to the inverter and cause an overload. This could cause damage to your equipment, at the very least your inverter will shut down to protect itself.

What voltage does a 12V inverter use?

So if you use 2, 5, or 10, 12V batteries the voltage would remain at 12V. This is important as your inverter will be designed for a specific input voltage – usually 12V or 24V. For example, if you connect together two 12V 100Ah batteries the voltage remains at 12V but you now have 200Ah of battery capacity.

How do you connect a battery to an inverter?

Connect the inverter's positive and negative terminals to the battery, add a fuse on the positive line, and double-check polarity. Match inverter and battery voltage (e.g., 12V to 12V). Always use a fuse or circuit breaker on the positive line. Use thick cables (4 AWG or lower) to prevent voltage drop.

Do inverters and batteries need to match?

The inverter and batteries must match in terms of voltage, capacity, and power output. If you are using a 12V battery, then the input voltage of the inverter must match the battery voltage. If the specifications of the battery and the inverter do not match, the system will not operate stably and may even damage the equipment.

## Can a 96v inverter be connected to a 12v battery

---



### Can I connect an inverter directly to a battery?

Yes, you can connect an inverter directly to a battery bank. Once the batteries are connected correctly, simply route the positive and negative wires from the inverter to the ...

### How to Connect a Large or Small Inverter to a ...

by: Justin Gray This blog answers questions about which inverters can be powered by 12V DC accessory outlets (cigarette lighter ...



### 96v system

I mean, I also have a brushless motor who can work at 96V and deliver twice the power that at 48V but I still plan a 48V battery because of available MPPT and inverters. ...

### Can I Attach My Small Inverter Directly to the Battery?

For example, a 12V inverter won't work with a 24V battery bank; the excess voltage can instantly destroy the inverter's circuitry. Conversely, a 24V inverter connected to a 12V ...



## How to Safely Connect a Battery to an Inverter: A Step-by ...

Learn how to safely connect your batteries to your inverter with our guide. Avoid common wiring mistakes to optimize performance and extend system life.

## How to Wire Inverter to Battery - No Sparks, Just Power

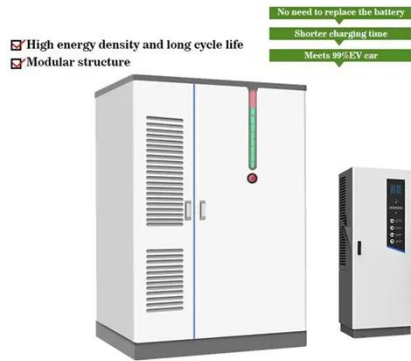
How to wire an inverter to a battery? Connect the inverter's positive and negative terminals to the battery, add a fuse on the positive line, and double-check polarity. Key ...



## How Many Batteries Can Be Connected to a 12V Inverter?

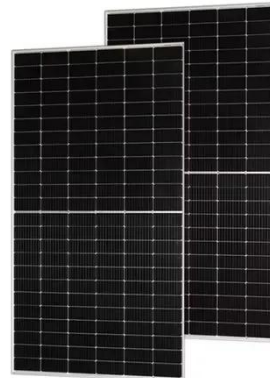
In conclusion, the number of batteries that can be connected to a 12V inverter depends on various factors such as inverter capacity, battery type, wiring,

and the specific ...



## How to Wire Inverter to Battery - No Sparks, ...

How to wire an inverter to a battery?  
Connect the inverter's positive and negative terminals to the battery, add a fuse on the positive ...



## How to connect inverter to battery: a step-by-step guide for ...



Proper stability ensures the longevity and safety of your setup while learning how to connect inverter to battery. How to connect inverter to battery When setting up a power ...

## How to Connect an Inverter to a Battery: Step-by-Step Guide ...

Learn how to safely and efficiently connect an inverter to a battery with our step-by-step guide. Includes brand-specific tips for Solis, Deye, Megarevo,

SRNE, and more. Perfect ...



## Connecting Multiple Batteries to an Inverter: ...

Need more battery capacity on your inverter? Let's look at how to add more batteries and how many batteries you can connect to an inverter.

## Connecting Multiple Batteries to an Inverter: Easy Guide

Need more battery capacity on your inverter? Let's look at how to add more batteries and how many batteries you can connect to an inverter.



## How to connect inverter to battery: a step-by ...

Proper stability ensures the longevity and safety of your setup while learning how to connect inverter to battery. How to connect inverter ...



## How to Safely Connect a Battery to an ...

Learn how to safely connect your batteries to your inverter with our guide. Avoid common wiring mistakes to optimize performance ...



### HEAT DISSIPATION

Cold aisle containment,  
making optimal refrigeration effect;



## How to Connect an Inverter to a Battery: Step ...

Learn how to safely and efficiently connect an inverter to a battery with our step-by-step guide. Includes brand-specific tips for Solis, ...

## How to Connect a Large or Small Inverter to a Battery

by: Justin Gray This blog answers questions about which inverters can be powered by 12V DC accessory outlets (cigarette lighter sockets) and which



require wiring ...



### **How Many Batteries Can Be Connected to a ...**

In conclusion, the number of batteries that can be connected to a 12V inverter depends on various factors such as inverter capacity, ...

## **Contact Us**

For catalog requests, pricing, or partnerships, please visit:  
<https://www.eqacc.co.za>