

EQACC SOLAR

Can 40 watts 12v drive an inverter



Overview

How many Watts should a 12V inverter use?

A quick rule is to divide watts by 10 for 12V systems or 20 for 24V systems. For more accuracy, divide the load by the actual battery voltage and adjust for inverter efficiency (typically 85%). This ensures you can correctly estimate battery drain and size your system safely.

Can a 12 volt car battery support a high power inverter?

Typically, a 12-volt car battery can support an inverter with a power range of about 150 watts to 1500 watts. Please note, however, that car batteries are not suitable for driving high power inverters for extended periods of time, which may cause damage to the battery.

How much battery does a 24 volt inverter use?

For 24-volt inverters, it is 10 %. The battery capacity for a 12-volt Mass Sine 12/1200, for instance, is 240 Ah, while a 24-volt Mass Sine 24/1500 inverter would require at least 150 Ah. The indicated battery capacity is only for the inverter. The capacity required for other loads should be added to it. How much power does an inverter consume?

.

How much power does a 12V inverter draw?

A 2000w 12v pure sine wave inverter draws power based only on its load. $\text{Current (Amps)} = \text{Load Watts} \div (\text{Battery Voltage} \times \text{Inverter Efficiency})$ Inverter efficiency is typically 85% (0.85). Example (12V system):

Can 40 watts 12v drive an inverter



Can a 12v inverter power a TV?

So, if you have a 50 - watt 12v inverter with an 80% efficiency rating, it can actually only supply about 40 watts of usable power. This means that if your TV uses 40 watts, you ...

Inverter Size Chat: What Size Inverter Do I ...

Inverter Size Chart To help you quickly find your inverter size, I have created this easy-to-read inverter size chart. The watt rating of each appliance is a ...



Can an Inverter Run a TV? The Ultimate Guide to Power Your

Understanding Inverters: A Brief Overview Before delving into whether an inverter can run your TV, it's vital to explain what an inverter is and how it functions. What is an ...



1075KWHH ESS

Inverter Size Calculator & Formula Online Calculator Ultra

A properly sized inverter can handle the power demands of the connected appliances without risk of failure or damage, ensuring a reliable power supply in various ...



Frequently Asked Questions about Inverters

How Much Battery Capacity Do I Need with An Inverter? How Much Power Does An Inverter consume? Is There A Stand-By Switch on The Inverter? Can I Power A Computer with An Inverter? Can A Microwave Be Powered with An Inverter? Are There Any Appliances That Cannot Be Powered by An Inverter? How Much Current Will An Inverter Draw from My Batteries? How Thick Should My Battery Cables be? Does An Inverter Need A Lot of Ventilation? Can An Inverter Be Used in Parallel with The Generator Or The Grid? Yes, you can. All Mastervolt sine wave inverters can easily and safely supply a computer without the slightest problem or risk. In fact, the output voltage from an inverter is often better than that from the electricity grid or shore power. This is why Mastervolt inverters, combined with a battery charger and a battery set, are often used as a back See more on mastervolt topbullshop

How Big of an Inverter Can

My Car Battery ...

When considering connecting an inverter to your car battery, the first question we need to clarify is: how much power can your car ...

What kind of inverter do I need for an inductive load?

I've been reading a bit and I think one way to solve the problem is to get an inverter capable of handling roughly 8 times the load of the AC. My calculations would indicate that I ...



How to size an inverter that can run your air ...

In this article, I'll explain in detail the main specifications to look at when shopping for an inverter that can run your air conditioner. I ...

How Much Battery Capacity Do You Need With a 12V Inverter?

Discover how to calculate the ideal battery capacity for a 12V inverter using simple math, practical examples, and money-saving tips for daily power.





How Big of an Inverter Can My Car Battery Handle?

When considering connecting an inverter to your car battery, the first question we need to clarify is: how much power can your car battery actually support an inverter? Typically, ...

How Big of an Inverter Can My Car Handle: ...

If you're planning to power your electronics or appliances while on the go, you may need an inverter. But before you go ahead and buy ...



What size inverter can you run off a car battery?

A typical 12-volt car battery can safely support an inverter ranging from about 150 watts up to 600 watts for regular use without harming the battery. While it is technically ...

Inverter Calculator

Change values in the boxes with arrows and the calculator will adjust to show you other system specifications: Inverter Input Inverter Power Rating Inverter Output 12VDC 24VDC 48VDC ...



How Big of an Inverter Can My Car Handle: Explained with Expert Tips

If you're planning to power your electronics or appliances while on the go, you may need an inverter. But ...

Frequently Asked Questions about Inverters

Frequently Asked Questions about Inverters How much battery capacity do I need with an inverter? As a rule of thumb, the minimum required battery capacity for a 12-volt system is ...



The Only Inverter Size Chart You'll Ever Need

We have created a comprehensive inverter size chart to help you select the correct inverter to power your appliances.

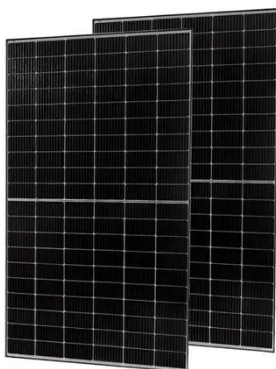


How Long Will A 12v Battery Last With An ...

As a simple rule, to calculate how long a 12v deep-cycle battery will last with an inverter multiply battery amp-hours (Ah) by 12 to ...

HEAT DISSIPATION

Cold aisle containment,
making optimal refrigeration effect;



Can a 12-volt 75Ah battery run a 1000 watts ...

In solar systems, car power supplies, and emergency power systems, the combination of 12V batteries and 1000W inverters is ...

How Long Will A 12v Battery Last With An Inverter? Calculator

As a simple rule, to calculate how long a 12v deep-cycle battery will last with an inverter multiply battery amp-hours (Ah) by 12 to find watt-hours, and divide by

the load watts ...



Inverter Calculator

Change values in the boxes with arrows and the calculator will adjust to show you other system specifications: Inverter Input Inverter Power Rating ...

How much power does an inverter draw? - Help Centre

The current draw from a 12V or 24V battery when running an inverter depends on the actual load, not the inverter size. A quick rule is to divide watts by 10 for 12V systems or 20 for 24V ...



12v Inverter, 12v DC to 110v/220v AC Power Inverter , inverter...

500-watt 12V to 120V inverter with DC 12V input voltage, peak power up to 1000W, and max efficiency reach 90%.

Equipped with USB port 5V 1A, the power inverter can work at ...



What Size Inverter Do I Need to Run a Fridge, Kettle, or ...

? What Is an Inverter? A power inverter converts DC power from your battery (usually 12V or 24V) into 240V AC so you can run standard household appliances while off ...



What does a power inverter do, and what can I use one for?

The inverter draws its power from a 12 Volt battery (preferably deep-cycle), or several batteries wired in parallel. The battery will need to be recharged as the power is drawn out of it by the ...

Understanding Battery Capacity and Inverter Compatibility

How Long Can a 100 Ah Battery Run a 1000W Inverter? To estimate how long a battery can run an inverter, we need to consider the power draw and the

battery's capacity. ...



Contact Us

For catalog requests, pricing, or partnerships, please visit:
<https://www.eqacc.co.za>