

EQACC SOLAR

Blown fuse in circuit breaker in Jakarta



Overview

Locate your home's circuit breaker. Your home's circuit breaker, or service panel, is easily identifiable. Look for a gray steel box with a hinged door. It will either b.

What is a blown fuse?

A blown fuse is a safety device that 'blows' when too much current is present in an electrical circuit. It stops the current flow, thus avoiding further damage. Reasons for this include: Knowing why a fuse 'blows' can help identify and sort out problems swiftly. Figuring out the cause of a blown fuse is really important!.

Can a blown fuse be reset?

Like breakers, fuses protect your electrical system from overloads caused by loose wires, faulty outlets, or too many devices running on the same circuit. However, instead of tripping, a fuse blows or burns out when overloaded. Once this happens, it can't be reset—a blown fuse must be replaced to restore power safely. What Is a Blown Fuse?

.

How do you fix a blown fuse in a circuit breaker?

When it comes to replacing a blown fuse in your circuit breaker, safety should always be the number one priority. Here are some key precautions you should take before attempting to fix the issue: – Turn off the power: Before doing anything, make sure to turn off the power supply to the circuit breaker.

What causes a blown fuse?

A blown fuse can be caused by a variety of factors, including overloaded circuits, short circuits, faulty appliances, faulty wiring, and power surges. 2. How do I know if a fuse is blown?

Blown fuse in circuit breaker in Jakarta

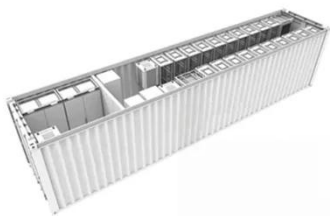


How to Tell If Your Fuse Is Blown and How Do To Fix It

A blown fuse instantly leaves you in the dark, wondering how to restore power to your home. Luckily, you can fix it fast with help from this guide.

How to Fix a Blown Fuse: Simple Steps for Homes & Cars

To replace a blown fuse in your home, cut power off from your circuit breaker and unscrew the broken fuse. Then, screw a new fuse of the same amperage into the socket.



How To Tell If Fuse Is Blown In Circuit Breaker

The type of fuse required is usually indicated on the fuse itself or in the appliance's manual. Q5: My circuit breaker keeps tripping. What ...

How to Tell If Your Fuse Is Blown and How Do ...

A blown fuse instantly leaves you in the dark, wondering how to restore power to your home. Luckily, you can fix it fast with help from this ...



How To Fix A Blown Fuse? Easy Steps To Restore Power

Follow these easy steps to fix a blown fuse and restore power in your home safely. Quick and effective guide for common electrical issues.

How To Fix A Blown Fuse? Easy Steps To ...

Follow these easy steps to fix a blown fuse and restore power in your home safely. Quick and effective guide for common electrical issues.



How to Deal with Tripped Circuit Breakers ...

This article will tell you everything you need to know about dealing with a tripped circuit breaker or a blown fuse in your home.



Possible Causes of a Blown Fuse and What to ...

What is a blown fuse? A blown fuse is a safety device that 'blows' when too much current is present in an electrical circuit. It stops ...



How To Tell If Fuse Is Blown In Circuit Breaker

The type of fuse required is usually indicated on the fuse itself or in the appliance's manual. Q5: My circuit breaker keeps tripping. What should I do? A5: If a circuit breaker trips ...

How to Replace a Blown Fuse in a Circuit Breaker: Your Step ...

Replacing a blown fuse in a circuit breaker is a relatively simple task that can be done with just a few tools and some basic knowledge. A blown fuse

occurs when too much ...



What Happens When a Fuse Blows and How ...

Like breakers, fuses protect your electrical system from overloads caused by loose wires, faulty outlets, or too many devices ...

What Do Tripped Circuit Breakers and Blown Fuses Indicate?

Tripped circuit breakers and blown fuses are common issues that can lead to frustration and confusion. These occurrences typically indicate an overloaded circuit or a short ...



How to Replace a Blown Fuse in a Circuit ...

Replacing a blown fuse in a circuit breaker is a relatively simple task that can be done with just a few tools and some basic knowledge. A ...



11 Possible Causes of a Blown Fuse and What to Do Next

Discover 11 common causes of blown fuses and learn when to call an electrician. Get expert tips from LimRic

...



What Happens When a Fuse Blows and How to Fix It

Like breakers, fuses protect your electrical system from overloads caused by loose wires, faulty outlets, or too many devices running on the same circuit. However, instead of ...

Possible Causes of a Blown Fuse and What to Do [2025]

What is a blown fuse? A blown fuse is a safety device that 'blows' when too much current is present in an electrical circuit. It stops the current flow, thus

avoiding further ...



- ☒ IP65/IP55 OUTDOOR CABINET
- ☒ OUTDOOR MODULE CABINET
- ☒ OUTDOOR ENERGY STORAGE CABINET
- ☒ 19 INCH

How to Deal with Tripped Circuit Breakers and Blown Fuses

This article will tell you everything you need to know about dealing with a tripped circuit breaker or a blown fuse in your home.

11 Possible Causes of a Blown Fuse and What to Do Next

Discover 11 common causes of blown fuses and learn when to call an electrician. Get expert tips from LimRic for safe, lasting fixes.



Contact Us

For catalog requests, pricing, or partnerships, please visit:
<https://www.eqacc.co.za>