

EQACC SOLAR

Blown fuse in circuit breaker in Bandung



Overview

Locate your home's circuit breaker. Your home's circuit breaker, or service panel, is easily identifiable. Look for a gray steel box with a hinged door. It will either b.

How do you fix a blown circuit breaker?

First, locate your circuit breaker or fuse box. Depending on the age of your home, you could have either. Once located, turn off the power supply to the affected circuit by flipping the corresponding switch or removing the fuse. Next, remove the blown fuse and replace it with a new one with the same amperage rating.

What happens if you blow a fuse or tripping a breaker?

Blowing a fuse or tripping a circuit breaker is a common issue, especially if you're a multitasker. If you overload a circuit, your system will cut off the electrical flow to prevent your wires from overheating and causing circuit damage or fire. Follow these steps to restore power and get all those appliances going again:.

Can a blown fuse be reset?

Like breakers, fuses protect your electrical system from overloads caused by loose wires, faulty outlets, or too many devices running on the same circuit. However, instead of tripping, a fuse blows or burns out when overloaded. Once this happens, it can't be reset—a blown fuse must be replaced to restore power safely. What Is a Blown Fuse?

.

What is a blown fuse?

A blown fuse is a safety device that 'blows' when too much current is present in an electrical circuit. It stops the current flow, thus avoiding further damage. Reasons for this include: Knowing why a fuse 'blows' can help identify and sort out problems swiftly. Figuring out the cause of a blown fuse is really important!

Blown fuse in circuit breaker in Bandung



How to Tell If Your Fuse Is Blown and How Do To Fix It

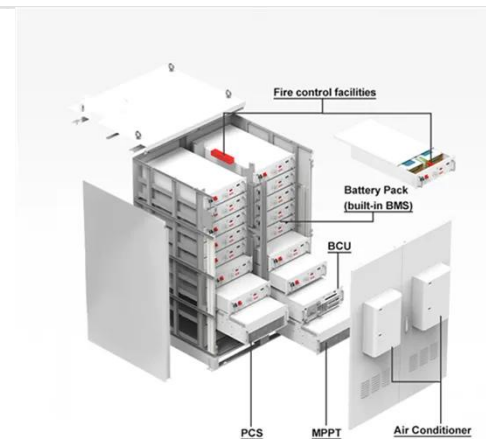
A blown fuse instantly leaves you in the dark, wondering how to restore power to your home. Luckily, you can fix it fast with help from this guide.

[Get Price](#)

How to Deal with Tripped Circuit Breakers and Blown Fuses

This article will tell you everything you need to know about dealing with a tripped circuit breaker or a blown fuse in your home.

[Get Price](#)



What does a Blown Fuse look Like & How to tell if a Fuse is Blown

Turn off power to the circuit (breaker or main disconnect). Remove the blown fuse using an insulated tool if needed. Inspect the fuse holder for burns or loose contacts. Install a ...

[Get Price](#)

What Happens When a Fuse Blows and How ...

Like breakers, fuses protect your electrical system from overloads caused by loose wires, faulty outlets, or too many devices ...

[Get Price](#)



11 Possible Causes of a Blown Fuse and What to Do Next

Discover 11 common causes of blown fuses and learn when to call an electrician. Get expert tips from LimRic ...

[Get Price](#)

How to Fix a Blown Fuse: Simple Steps for Homes & Cars

To replace a blown fuse in your home, cut power off from your circuit breaker and unscrew the broken fuse. Then, screw a new fuse of the same amperage into the socket.

[Get Price](#)



Possible Causes of a Blown Fuse and What to ...

What is a blown fuse? A blown fuse is a safety device that 'blows' when too much current is present in an electrical



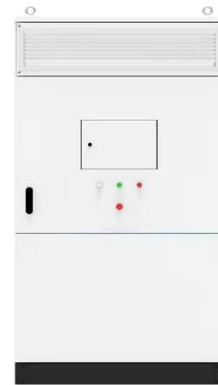
circuit. It stops ...

[Get Price](#)

How to Tell If Your Fuse Is Blown and How Do ...

A blown fuse instantly leaves you in the dark, wondering how to restore power to your home. Luckily, you can fix it fast with help from this ...

[Get Price](#)



How to Fix a Blown Fuse or Tripped Circuit Breaker

Are you dealing with a blown fuse or tripped circuit breaker? There's no reason to panic. Consider using these tips to fix this common electrical problem.

[Get Price](#)

How to Fix a Blown Fuse or Tripped Circuit ...

Are you dealing with a blown fuse or tripped circuit breaker? There's no reason to panic. Consider using these

tips to fix this common ...

[Get Price](#)



How to Replace a Blown Fuse in a Circuit ...

Replacing a blown fuse in a circuit breaker is a relatively simple task that can be done with just a few tools and some basic knowledge. A ...

[Get Price](#)

11 Possible Causes of a Blown Fuse and What to Do Next

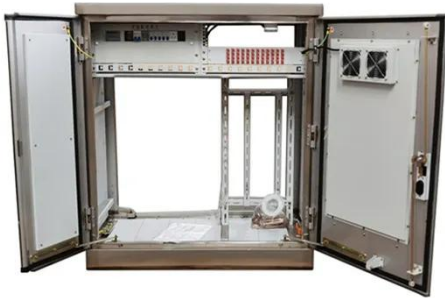
Discover 11 common causes of blown fuses and learn when to call an electrician. Get expert tips from LimRic for safe, lasting fixes.

[Get Price](#)



How to Replace a Blown Fuse in a Circuit Breaker: Your Step ...

Replacing a blown fuse in a circuit breaker is a relatively simple task that

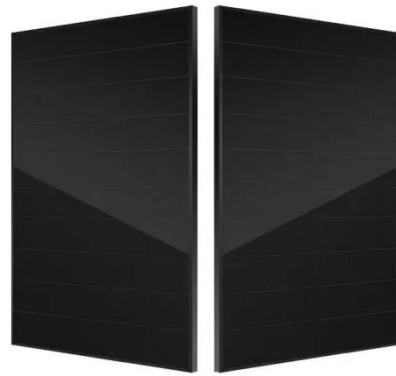


can be done with just a few tools and some basic knowledge. A blown fuse occurs when too much ...

[Get Price](#)

How To Tell If Fuse Is Blown In Circuit Breaker

The type of fuse required is usually indicated on the fuse itself or in the appliance's manual. Q5: My circuit breaker keeps tripping. What should I do? A5: If a circuit breaker trips ...



[Get Price](#)



What does a Blown Fuse look Like & How to ...

Turn off power to the circuit (breaker or main disconnect). Remove the blown fuse using an insulated tool if needed. Inspect the fuse ...

[Get Price](#)

What Happens When a Fuse Blows and How to Fix It

Like breakers, fuses protect your electrical system from overloads caused by loose wires, faulty outlets, or too

many devices running on the same circuit. However, instead of ...

[Get Price](#)



How To Tell If Fuse Is Blown In Circuit Breaker

The type of fuse required is usually indicated on the fuse itself or in the appliance's manual. Q5: My circuit breaker keeps tripping. What ...

[Get Price](#)

How to Deal with Tripped Circuit Breakers ...

This article will tell you everything you need to know about dealing with a tripped circuit breaker or a blown fuse in your home.

[Get Price](#)



Possible Causes of a Blown Fuse and What to Do [2025]

What is a blown fuse? A blown fuse is a safety device that 'blows' when too much current is present in an electrical



circuit. It stops the current flow, thus avoiding further ...

[Get Price](#)

Contact Us

For catalog requests, pricing, or partnerships, please visit:
<https://www.eqacc.co.za>