

**EQACC SOLAR**

# **Base station and power distance specifications**



## Overview

---

What is the maximum base station Power?

Maximum base station power is limited to 24 dBm output power for Local Area base stations and to 20 dBm for Home base stations, counting the power over all antennas (up to four). There is no maximum base station power defined for Wide Area base stations.

How much power does a base station have?

Maximum base station power is limited to 38 dBm output power for Medium-Range base stations, 24 dBm output power for Local Area base stations, and to 20 dBm for Home base stations. This power is defined per antenna and carrier, except for home base stations, where the power over all antennas (up to four) is counted.

What is base station Power?

Base station power refers to the output power level of base stations, which is defined by specific maximum limits (24 dBm for Local Area base stations and 20 dBm for Home base stations) and includes tolerances for deviation from declared power levels, as well as specifications for total power control dynamic range. How useful is this definition?

.

What is a base station & a PV powering Unit?

The base station uses radio signals to connect devices to network as a part of traditional cellular telephone network and solar powering unit is used to power it. The PV powering unit uses solar panels to generate electricity for base stations in areas with no access to grid or areas connected to unreliable grids.

## Base station and power distance specifications

---



### Specifications of a base station and typical radio system for

A typical set of base stations including several Wi-Fi transceivers consumes 50 W or less, enabling operation by only solar power when necessary.

### Recommendations on Base Station Antenna Standards ...

Abstract This whitepaper addresses the performance criteria of base station antennas, by making recommendations on standards for electrical and mechanical ...



### Optimum sizing and configuration of electrical system for

A detailed analysis was conducted under different grid power availabilities and base station load profiles heterogeneous to different geographical locations where ...



### RECOMMENDATION ON BASE SYSTEM STANDARDS

Reference to specific frequencies is indicated where relevant for the specification of the parameter or information to be reported. The reader must be familiar with the NGMN ...

## ESS



## Mobile Phone Base Stations EMF / Health Fact Pack

Base station sites Transmitted power levels from base stations vary considerably depending on the required area or 'cell' that they are providing coverage for. Typically ...

## Technical Specifications for Mobile Broadband Base ...

Technical Specifications for Mobile Broadband Base Station Radio Frequency Equipment Legal Basis The Specifications are established on Paragraph 2, Article 66 of the ...



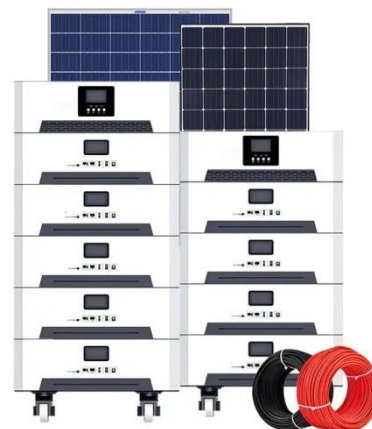
## ICNIRP , Base Stations

Over large distances, the signals must be relayed by a communication network comprising base stations and often supported by a wired network. The power of a base station varies (typically



## 5G NR Base Station types

Home > Technical Articles > 5G NR Base Station types As per 3GPP specifications for 5G NR, it defines three classes for 5G NR base stations: Wide Area Base Station Medium Range Base ...



## TS 138 104

TECHNICAL SPECIFICATION 5G; NR; Base Station (BS) radio transmission and reception (3GPP TS 38.104 version 15.2.0 Release 15)



## Specifications of a base station and typical ...

A typical set of base stations including several Wi-Fi transceivers consumes 50 W or less, enabling operation by only solar ...



---

## Power Base Station



The transmitter characteristics define RF requirements for the wanted signal transmitted from the UE and base station, but also for the unavoidable unwanted emissions outside the transmitted ...

---

## Contact Us

For catalog requests, pricing, or partnerships, please visit:  
<https://www.eqacc.co.za>