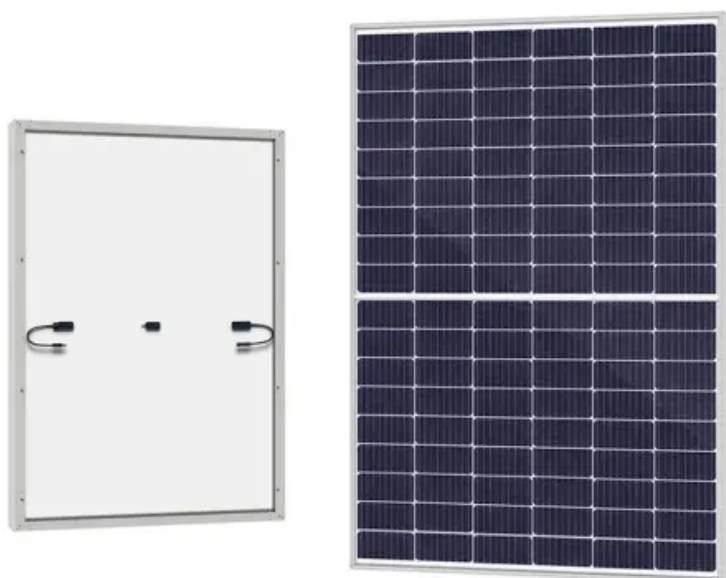


EQACC SOLAR

60V inverter simple production



Overview

What is a simple inverter?

An inverter which uses minimum number of components for converting a 12 V DC to 230 V AC is called a simple inverter. A 12 V lead acid battery is the most standard form of battery which is used for operating such inverters. Let's begin with the most simplest in the list which utilizes a couple of 2N3055 transistors and some resistors.

How does an inverter circuit work?

Referring to the circuit design below we can see that the inverter circuit uses just 4 transistors, a transformer, and a battery to implement a full 100 watt power output from a small 12V 10 AH battery. The circuit works with a push pull kind of operation where the Q1 and Q2 form a basic astable multivibrator for creating the basic 50 Hz frequency.

How does a 220 volt inverter work?

This is actually an oscillating circuit, which turns the DC power into AC power, then turns it into 220V through the transformer boost, and then connects the electrical device to the output terminal, but the inverter made by these components. The output waveform must have no grid standard, but driving the bulb is sufficient.

What type of transformer do you need for an inverter circuit?

The transformer can be any ordinary iron core 9-0-9 V to 220 V or 120 V step down transformer, connected in the reverse order. The above explained were a few straightforward inverter circuit designs, however if you think these are pretty ordinary for you, you can always explore more advanced designs which are included in this website.

60V inverter simple production



7 Simple Inverter Circuits you can Build at Home

Building a simple 60V to 220V inverter balances component selection, thermal design, and application-specific customization. As renewable energy adoption grows, mastering these ...

Exploring 60 V Solar Inverter: Technical Features, Mechanical

Discover the technical features, mechanical properties, and real-world applications of a 60 V solar inverter. Explore specifications, performance efficiency, durability, and how this inverter ...



**200kWh
Battery Cluster**

How To Produce Inverter: A Step-by-Step ...

This article will explain how to produce inverter and the key components and walk you through the manufacturing process, from ...

How To Produce Inverter: A Step-by-

Step Guide

This article will explain how to produce inverter and the key components and walk you through the manufacturing process, from design to final assembly.



The discreet components do everything: how to simplify the ...

The first step in simplifying the design of a three-phase inverter is to select the right discreet component. For our 48V-60V inverter, we will use a high-quality, insulated-gate ...

How is the inverter manufactured?

Inverter production process Design planning The first step in inverter production is the design planning phase. At this stage, ...



Simple 60v inverter production

60v to 220v inverter circuit production (six inverter circuit ... Inverter circuit (2) The inverter with only 4 components is simple to make and is good for general lighting.



60V to 230V inverter, pure sine wave

The inverters on this page work with a DC voltage of 60 Volt and provide 230V AC output voltage with a pure sine wave.



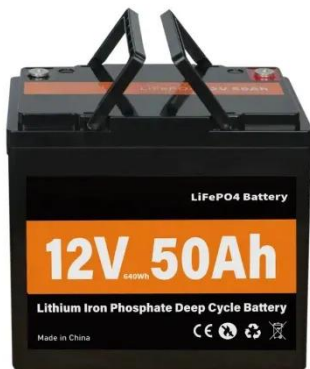
How is the inverter manufactured?

Inverter production process Design planning The first step in inverter production is the design planning phase. At this stage, junchipower needs to determine the specifications, ...

7 Simple Inverter Circuits for Newcomers

The 7 simple inverter circuits for newcomers explained in the following paragraphs concerns easy to build designs and as economical as you could

possibly would like. 1) Simple ...



7 Simple Inverter Circuits you can Build at Home

These 7 inverter circuits might look simple with their designs, but are able to produce a reasonably high power output and an efficiency of around 75%. Learn how to build ...

60v to 220v inverter circuit production (six inverter circuit ...

The inverter with only 4 components is simple to make and is good for general lighting. R1 and R2 are selected between 1.2k and 4.7k according to the difference between the triode and the ...



Simplest 60V to 220V Inverter Production A Practical Guide

Building a simple 60V to 220V inverter balances component selection, thermal design, and application-specific customization. As renewable energy

adoption grows, mastering these ...



Contact Us

For catalog requests, pricing, or partnerships, please visit:
<https://www.eqacc.co.za>