

Overview

Why should you buy a Solis 3.6kW S6 inverter?

By sourcing the inverter yourself, you can make a huge saving on the prices quoted by installation companies for supply and fit services. The Solis 3.6kW S6 is the latest generation of residential inverters from Solis, designed for residential & commercial rooftop installations.

What is a Solis S6 dual MPPT solar inverter?

The Solis 3.6kW S6 Dual MPPT is the latest generation of residential Single-Phase Solar inverter from Solis; this new range of inverters are leaders in affordable small residential and commercial rooftop installations. Features of the Solis 3.6kW S6 Solar Inverter: Easy installation: Integrate with export power control function and DRM function.

What is a residential solar inverter?

The residential solar inverter solution is mainly composed of PV modules, inverters, grid-connected boxes, and other main components. The residential 3.6-25kW on-grid solar inverter system can adapt to different rooftops. Our residential solar inverters support 4G/WIFI/RS485 communication with the AUXSOL cloud monitoring platform.

What is s6-gr1p K-M series inverter?

S6-GR1P (0.7-3.6)K-M series inverter is designed for residential PV plants. The maximum input current per string is 14A, which is compatible with high-efficiency modules and bi-facial modules. Compact and lightweight design, make it easy to install. Fanless design, lower noise, brings you a comfortable living environment.

3 6 kw solar inverter factory in London

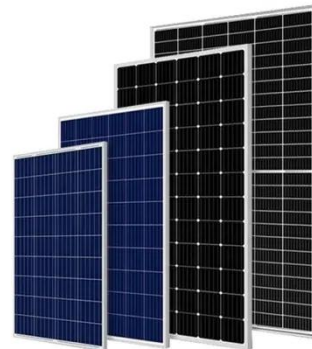


AUXSOL: Leading Solar Inverter Manufacturer ...

Discover top-quality solar inverters from AUXSOL-- a leading solar PV inverter supplier offering on-grid and hybrid solar power inverters, as well ...

AUXSOL: Leading Solar Inverter Manufacturer and Supplier

Discover top-quality solar inverters from AUXSOL-- a leading solar PV inverter supplier offering on-grid and hybrid solar power inverters, as well as energy storage solutions.



LuxPower Single Phase Hybrid Inverter 3.6kW

Designed for homeowners seeking reliable and efficient energy storage, the Luxpower's LXP single phase hybrid inverter delivers optimal solar energy use with high PV input and intelligent ...

GivEnergy 1PH Hybrid Inverter 3.6kW 3rd Generation

The 3rd generation of the GivEnergy Hybrid Inverter range PLEASE NOTE: This is an updated version, and an Earth Bonding Kit is no longer required. GIV-PE-KIT-G3 is NOT required as a ...



GivEnergy 1PH Hybrid Inverter 3.6kW 3rd ...

The 3rd generation of the GivEnergy Hybrid Inverter range PLEASE NOTE: This is an updated version, and an Earth Bonding Kit is no longer ...

GivEnergy 3.6kW String Inverter Gen 3

The GivEnergy Gen 3 3.6kW String Inverter offers a smart and efficient solution for domestic solar installations, with seamless integration into the ...



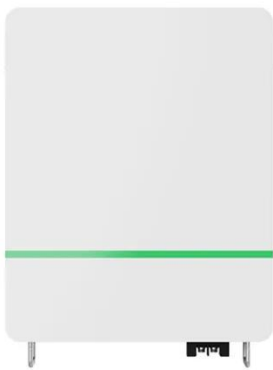
0.7-3.6kW PV string inverter_ Residential ...

The S6-GR1P (0.7-3.6)K-M inverter is designed for residential PV systems. Its 16A maximum input current per string supports high-efficiency and ...



Fox ESS F3600 3.6kW Single Phase String Inverter

Fox ESS F3600 - efficient 3.6 kW inverter for UK solar homes The Fox ESS F3600 3.6 kW Single Phase String Inverter delivers high-performance power conversion for modern British solar ...

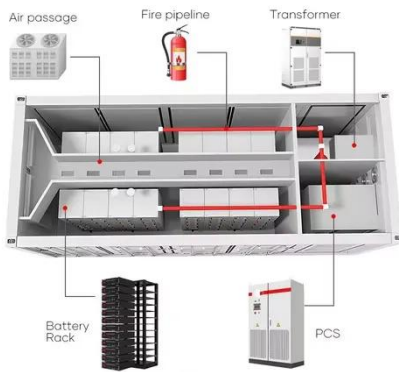


0.7-3.6kW PV string inverter_ Residential inverter

The S6-GR1P (0.7-3.6)K-M inverter is designed for residential PV systems. Its 16A maximum input current per string supports high-efficiency and bifacial modules. The unit is compact, ...

Fox ESS F3600 3.6kW Single Phase String ...

Fox ESS F3600 - efficient 3.6 kW inverter for UK solar homes The Fox ESS F3600 3.6 kW Single Phase String Inverter delivers high-performance ...



SMA Sunny Boy 3.6kW Solar Inverter - Single Phase - 2 ...

It is more than just a PV inverter: with the integrated SMA Smart Connected service, it offers all-round comfort for PV system operators and installers alike. The automatic inverter monitoring ...

Solis 3.6kW S6 Inverter

The Solis 3.6kW S6 Dual MPPT is the latest generation of residential Single-Phase Solar inverter from Solis; this new range of inverters are leaders in affordable small residential and ...



GivEnergy 3.6kW String Inverter Gen 3

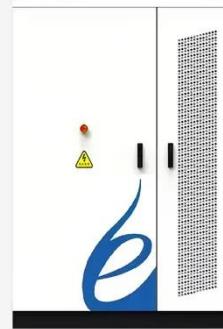
The GivEnergy Gen 3 3.6kW String Inverter offers a smart and efficient solution for domestic solar installations, with seamless integration into the

GivEnergy ecosystem. 3.6kW single-phase ...



LuxPower Single Phase Hybrid Inverter 3.6kW

Designed for homeowners seeking reliable and efficient energy storage, the Luxpower's LXP single phase hybrid inverter delivers optimal solar energy ...

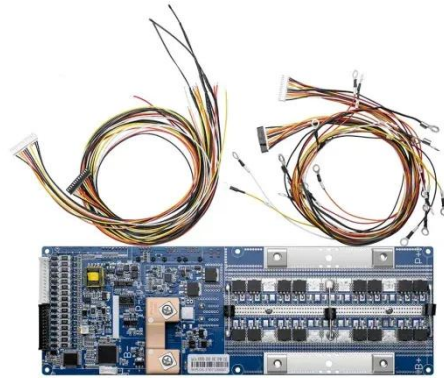


S6 3.6kW 2MPPT 1PH Inverter

Solis Series 6 is the latest generation of grid-tied residential inverters from Solis. This range of inverters are leaders in affordable small residential rooftop installations. Product Features ...

Solis 3.6kW Solar Inverter

S6-GR1P (2.5-6)K series inverter is designed for residential PV plants. The maximum input current per string is 14A which is compatible with high-efficiency modules and bi-facial modules.



Contact Us

For catalog requests, pricing, or partnerships, please visit:
<https://www.eqacc.co.za>