

**EQACC SOLAR**

# **25-year income of solar panels on sloped roofs**



## Overview

---

Are roofs good for solar energy harvesting?

The unique properties of roofs, such as good sunlight incidence, good ventilation conditions, no redundant shielding, and flexible tilt angle for PV panels, are advantageous for solar energy harvesting. Accordingly, roofs present the highest efficiency potential for PV generation systems in buildings (Lin et al., 2014).

How to install photovoltaic panels on a roof?

Photovoltaic panel installations in roofs with different formats. PV modules can be placed horizontally or at an angle on flat roofs (Bayod-Rujula et al., 2011). In sloped roofs, PV modules are generally applied at the same inclination angle as the roof, and placed in parallel to increase the system efficiency.

Are roofs a good source of energy for PV generation?

Accordingly, roofs present the highest efficiency potential for PV generation systems in buildings (Lin et al., 2014). However, the impact of roof equipment (e.g., water tanks, central air conditioning units, ventilation equipment, communication signal base station) and their shadow must also be considered.

Do cities affect solar potential of building roofs?

The findings and further study suggestions are summarized as below: In studies at the city scale, the efficiency and accuracy of modeling and calculation methods are critical. The city forms and local climate characteristics can substantially affect the solar potential of building roofs.

## 25-year income of solar panels on sloped roofs

---



### Research status and application of rooftop photovoltaic ...

The unique properties of roofs, such as good sunlight incidence, good ventilation conditions, no redundant shielding, and flexible tilt angle for PV panels, are advantageous for ...

### Can photovoltaic panels be installed on high-rise sloped ...

As well, solar panel installations on sloped roofs can act to trap snow that otherwise may have been considered to slide off the roof structure. Finally, roofing systems installed in new ...



### Can solar panels be installed on a sloped roof?

Solar panels are a long - term investment, and you want to make sure your roof can support them for the duration of their lifespan, which is usually around 25 - 30 years.

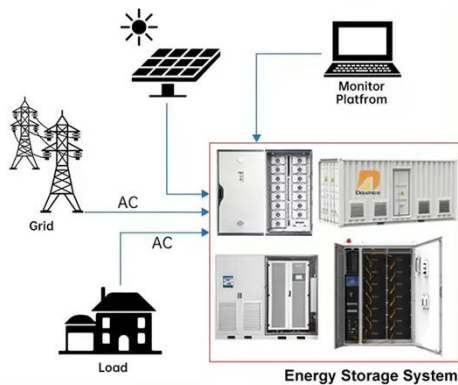
## 30-year income of photovoltaic

## panels on sloped roofs in ...

Are solar panels financially feasible? The financial feasibility of the two technologies was assessed by Payback Period and Net Present Value (NPV), through data obtained by local ...



### DISTRIBUTED PV GENERATION + ESS



## Commercial Rooftop Solar Engineering Guide ...

Why 67% of Commercial Solar Projects Fail Engineering Reviews: The Ultimate Guide to Flat vs. Sloped Roof Installations in 2025 The ...

## MAXIMIZING Solar Power Generation

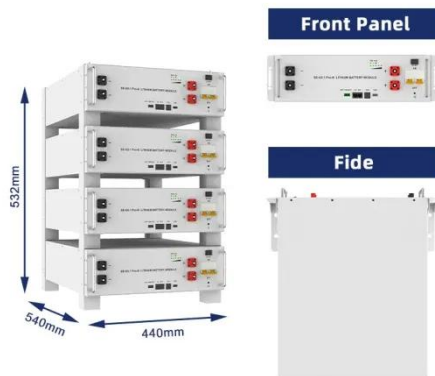
Some of the latest developments in SPV panels include frameless solar panels, clear (glass) solar panels, double-sided solar panels, and so on. The newer constructions in ...



## 25-year income of photovoltaic panels on sloped roofs

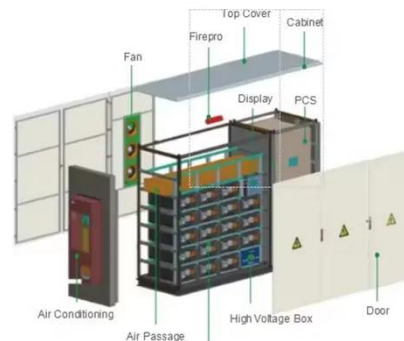
Photovoltaic panel installations in roofs with different formats. PV modules can be placed horizontally or at an angle on flat roofs (Bayod-Rujula et al., 2011). In

sloped roofs, PV ...



## Commercial Rooftop Solar Engineering Guide 2025: Flat vs ...

Why 67% of Commercial Solar Projects Fail Engineering Reviews: The Ultimate Guide to Flat vs. Sloped Roof Installations in 2025 The commercial rooftop solar engineering boom isn't slowing ...



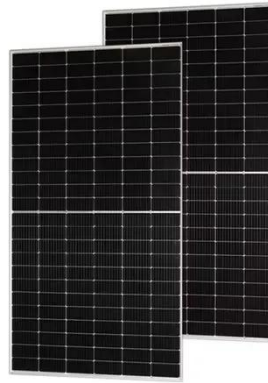
## How to use solar energy on a sloping roof , NenPower

The use of solar energy on sloping roofs presents a unique opportunity for harnessing renewable energy efficiently. Adapting to local conditions and ensuring the right ...

## What is the impact of a sloped flat roof on PV panel ...

Impact of Sloped Flat Roofs on Sunlight Intensity A sloped flat roof can have a significant impact on the sunlight

intensity received by PV panels. Unlike a perfectly flat roof, a ...



### **Sloped roof solar power generation**

The roof-mounted solar PV is installed at the optimum angle for each latitude and is sun-facing and shade-free to generate maximum electricity output. The building rooftops are flat in design ...

## **Contact Us**

For catalog requests, pricing, or partnerships, please visit:  
<https://www.eqacc.co.za>